

MV4.1

eHome



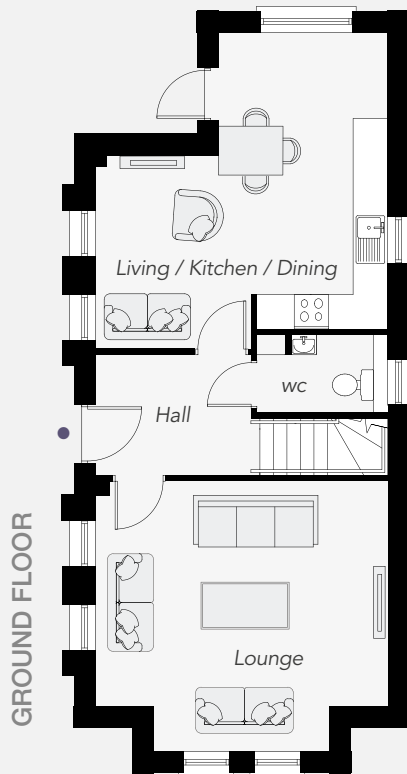
*Computer visual, solar panel positioning is for illustrative purposes only.*



**MILLMOUNT  
VILLAGE**  
COMBER ROAD, DUNDONALD

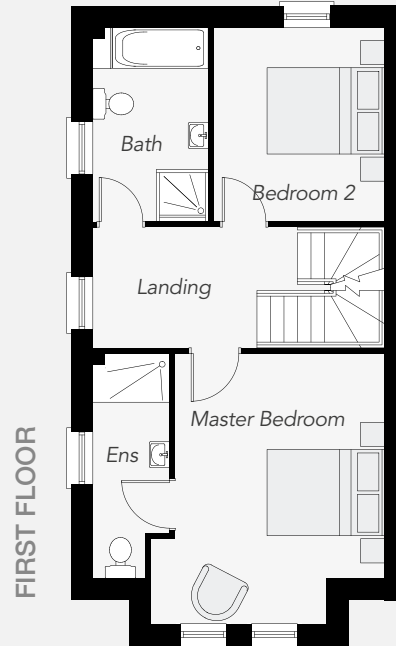
**MILLMOUNT  
PHASE**

**Lagan eHomes** have been designed to be more sustainable by retaining heat and saving on energy bills. The energy efficiency of these homes is achieved by using thermally efficient insulation, highly thermal doors and windows and the latest in heating technology.



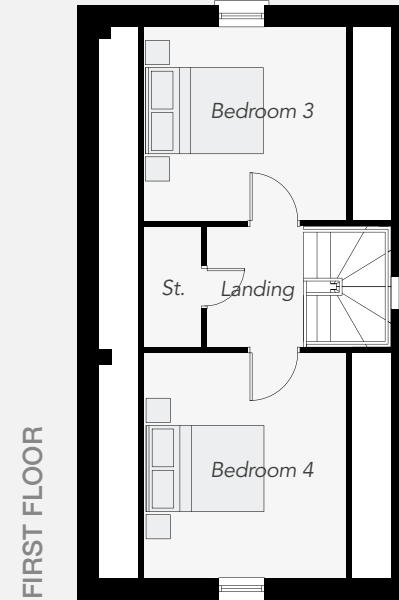
GROUND FLOOR

Entrance Hall with separate wc  
Lounge (exc. Bay) 16'6" x 12'7"  
Kitchen / Dining (max) 17'10" x 16'6"



FIRST FLOOR

Master Bedroom (max) 15'2" x 13'2"  
Ensuite  
Bedroom 2 10'10" x 9'7"  
Bathroom



SECOND FLOOR

Bedroom 3 11'4" x 10'10"  
Bedroom 4 12'7" x 11'4"

**eHome**

TOTAL FLOOR AREA  
1,567 sq. ft. approx.

**SimonBrien**  
NEW HOMES

Telephone 028 9059 5555  
[www.simonbrien.com](http://www.simonbrien.com)

**Reeds Rains**

Telephone 028 9065 5555  
[www.reedsrains.co.uk](http://www.reedsrains.co.uk)



These particulars do not constitute any part of an offer or contract. None of the statements contained in these particulars are to be relied on as statements or representations of fact and intending purchasers must satisfy themselves by inspection or otherwise as to the correctness of each of the statements contained in these particulars. All measurements of area are quoted as Net Sales Area which is calculated in accordance with the RICS Code of Measuring Practice (6th Edition) APP 21. Configurations of kitchens, bathrooms and wardrobes may be subject to alteration from those illustrated without prior notification. Purchasers should satisfy themselves as to the current specification at the time of booking. The Vendor does not make or give, and neither the Selling Agent, nor any person in their employment, has any authority to make or give any representation or warranty whatever in relation to any property. Computer visuals are for illustration only. Plans are not to scale and all dimensions shown are approximate.

**LaganHomes**

[www.laganhomes.com](http://www.laganhomes.com)