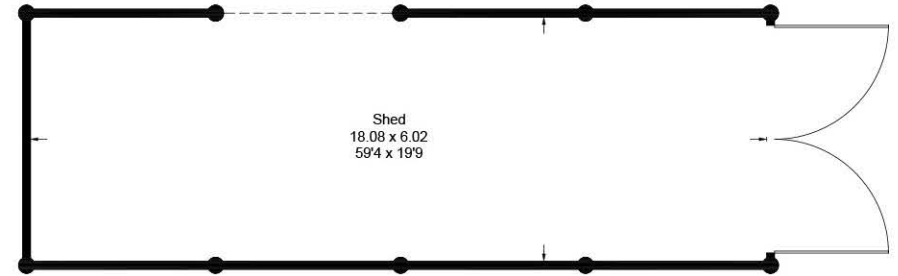
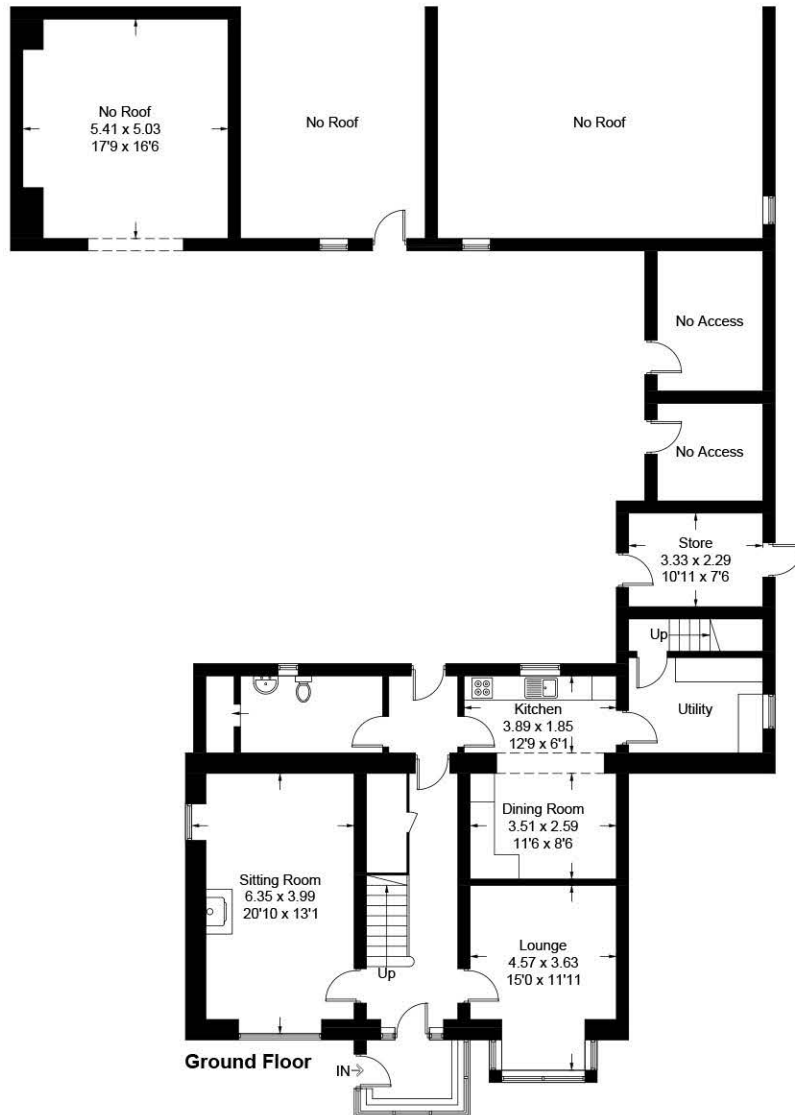


Eglinton Estate

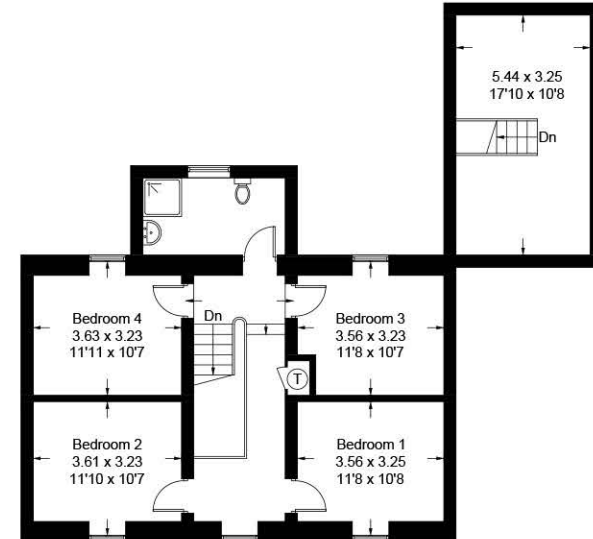
Approximate Gross Internal Area = 204.8 sq m / 2204 sq ft

Outbuildings = 152.1 sq m / 1637 sq ft

Total = 356.9 sq m / 3841 sq ft
(Excluding Open Space)



Ground Floor

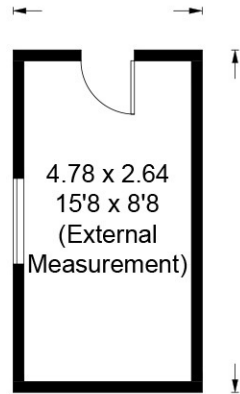


First Floor

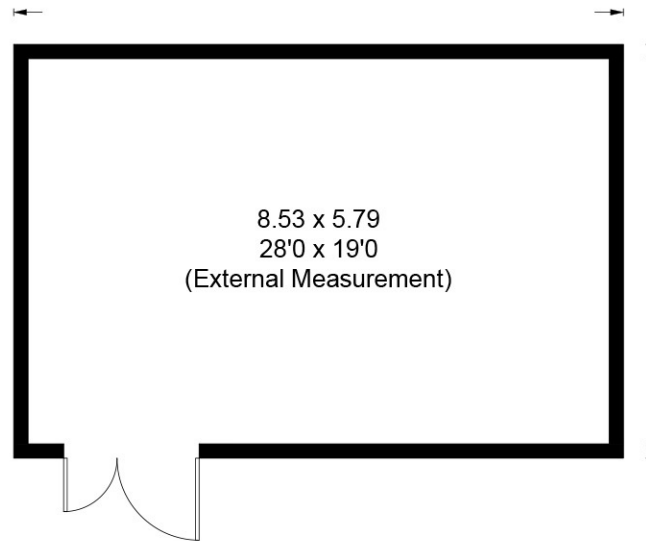
Illustration for identification purposes only, measurements are approximate,
not to scale. Fourlabs.co © (ID1213432)

Eglinton Estate

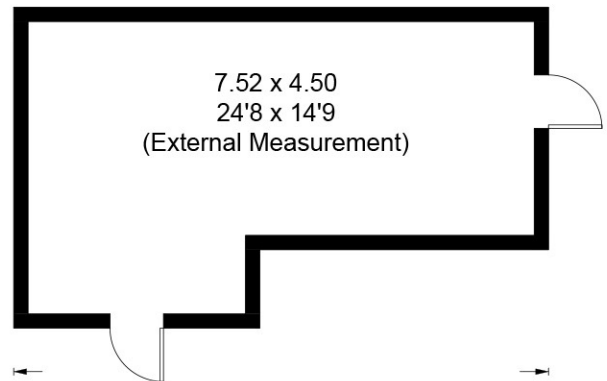
Approximate Gross Internal Area = 119.9 sq m / 1291 sq ft



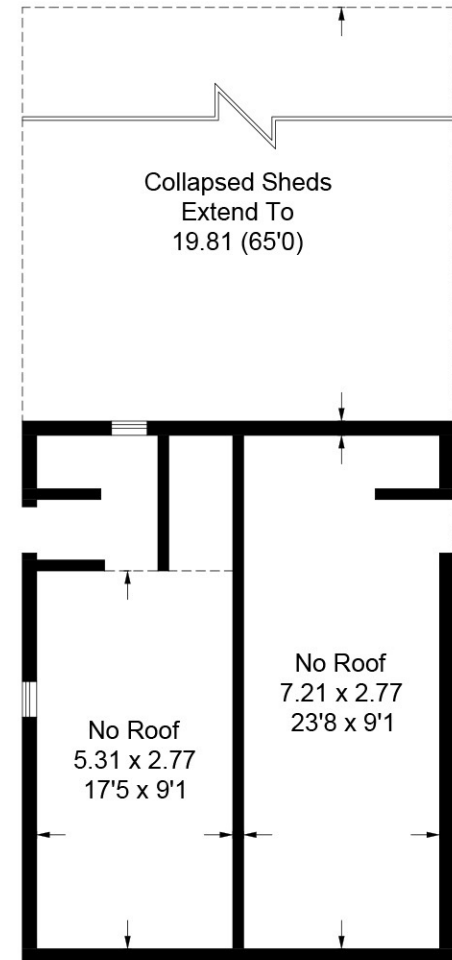
East Pump House
(Not Shown In Actual Location / Orientation)



West Pump House
(Not Shown In Actual Location / Orientation)



Mid Pump House
(Not Shown In Actual Location / Orientation)



Derelict Buildings
(Not Shown In Actual Location / Orientation)

Eglinton Estate

Approximate Gross Internal Area = 1311.5 sq m / 14117 sq ft

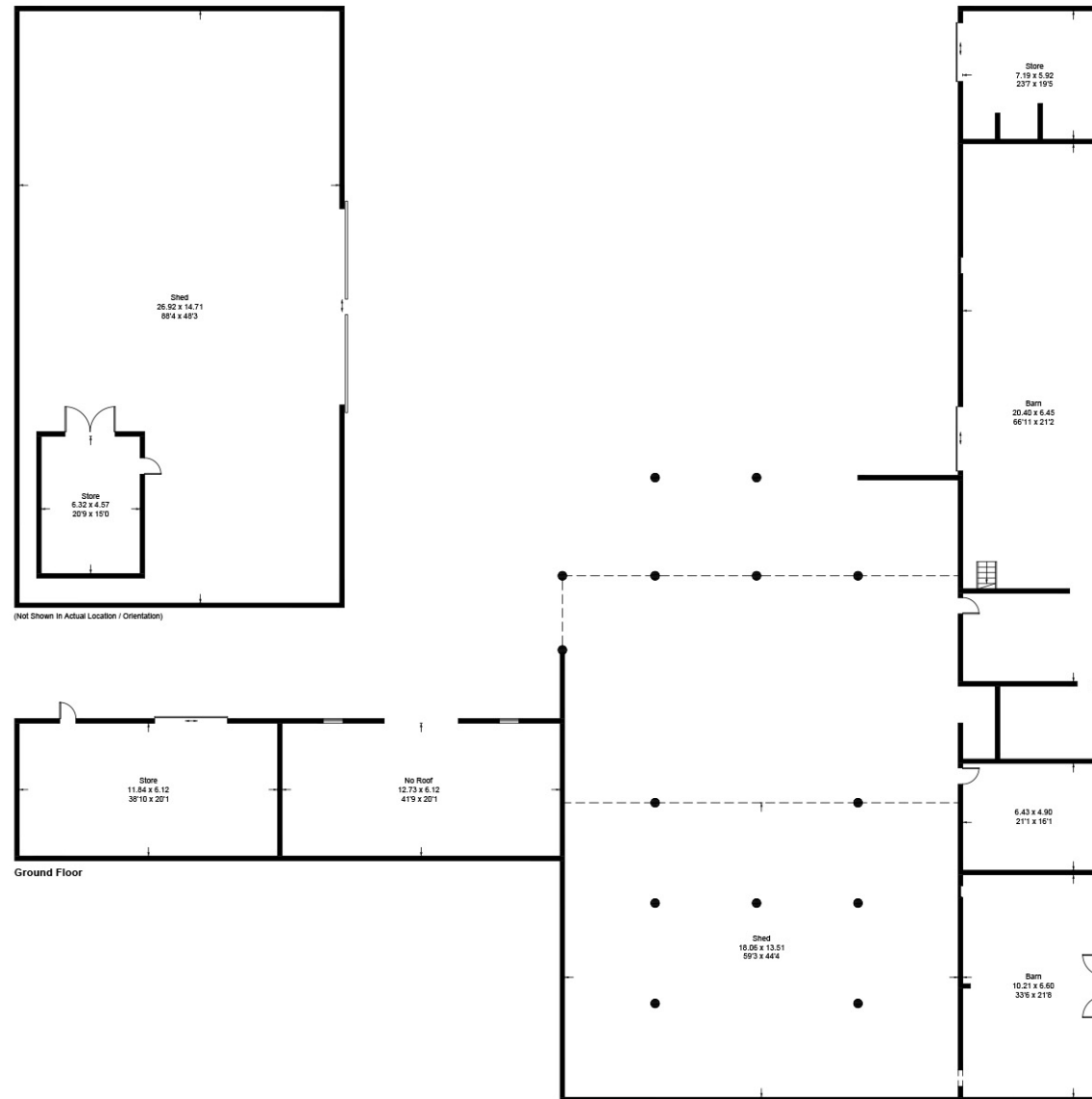


Illustration for identification purposes only, measurements are approximate,
not to scale. Fourlabs.co © (ID1213432)