



19 Greenfield Road, Kells, BT42 3JL

£750 Per month



This easily maintained two bedroom mid terrace house is finished to an excellent standard throughout. Convenient to local shops and amenities, with easy access to Ballymena's arterial commuter routes, this property is likely to be popular with prospective tenants from the outset.

Potential tenants will be asked to complete an application form prior to viewing (there is no charge for this) and will require a guarantor in order to be considered for the property.

You can apply for the property via our website at harryclarke.co.uk/tenancy-application/.

Pets/smoking are not permitted at the property.

Property Features

- Mid-terrace house finished to an excellent standard
- Living room with open archway into kitchen
- Modern fitted kitchen
- Two well proportioned first floor bedrooms
- Bathroom fitted with a contemporary suite
- PVC Double glazing
- Oil fired heating system
- Detached garage to the rear

Accommodation

(Dimensions and Areas are approximate)

Ground Floor

Entrance Hall

PVC front door

Living Room 17'10" x 12'4" (5.46m x 3.78m)

Kitchen 12'5" x 9'4" (3.79m x 2.85m)

Newly fitted kitchen, comprised of a contemporary range of eye and low level units, and laminate work surfaces with matching upstands. Integrated appliances include a hob and an over. There is space for an american style fridge freezer, and space and plumbing for a washing machine or dishwasher (please note these items are not provided as part of the tenancy).

Tiled floor.

PVC back door.

First Floor

Landing

Bedroom 1 11'0" x 9'4" (3.37m x 2.85m)

Bedroom 2 12'5" x 9'4" (3.8m x 2.86m)

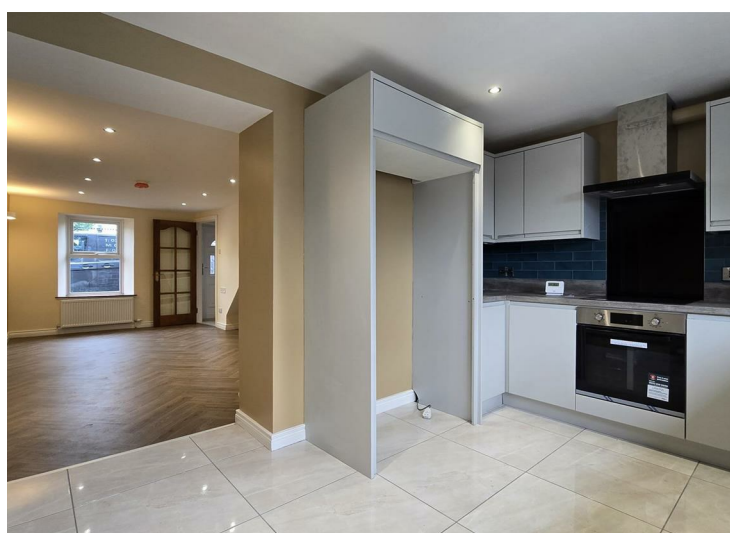
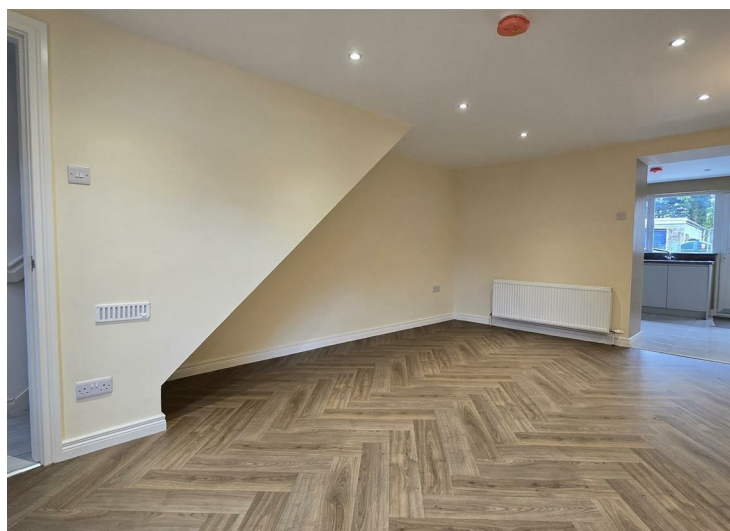
Bathroom 7'11" x 9'1" (2.42m x 2.77m)

Fitted with a contemporary suite, including a large shower cubicle, bath, W/C and wash hand basin with vanity unit. Tiled floor to ceiling. Heated towel rail.

Outside

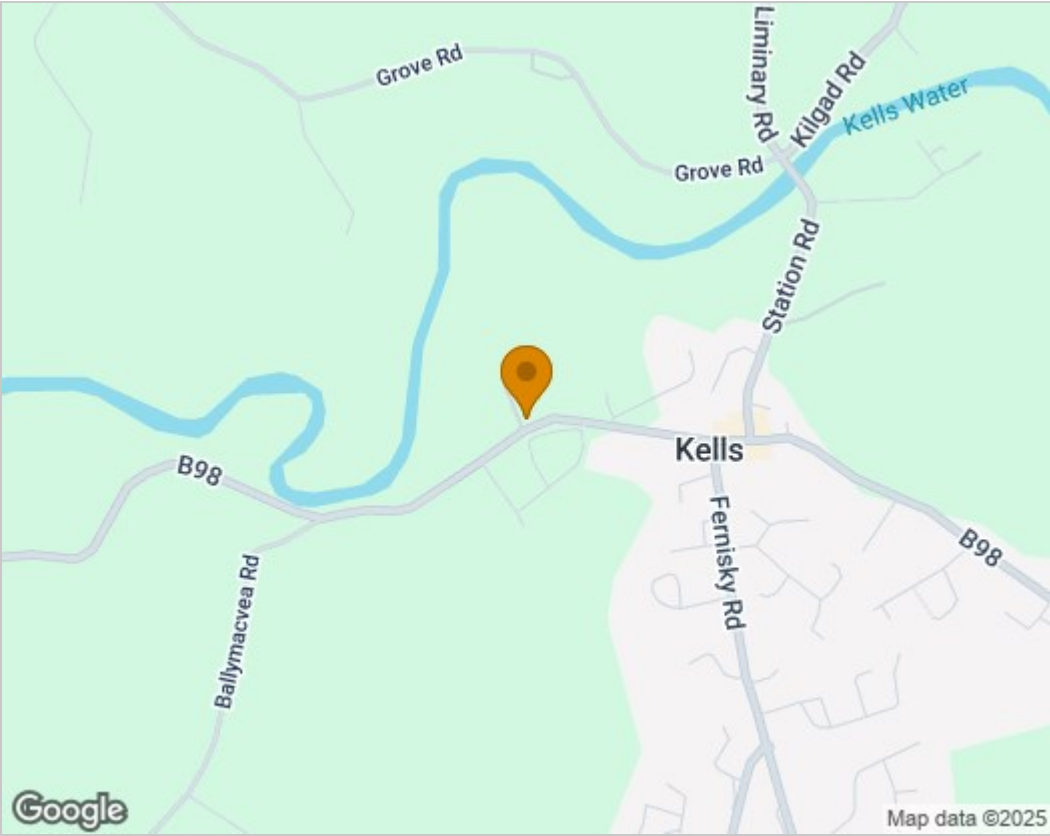
On street parking is available to the front of the property.

To the rear is a garden area and detached garage (please note the garage is plumbed for a washing machine, but one is not provided with the tenancy).

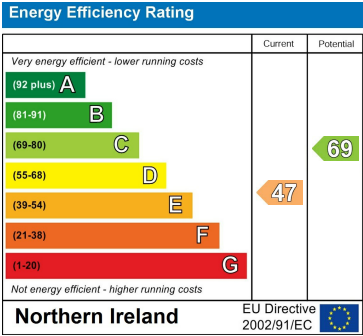




Area Map



Energy Efficiency Graph



Harry Clarke & Company is a trading entity of Harry Clarke & Company Limited. Registered in N.I. Company Number NI643802

Disclaimer-These particulars do not constitute any part of an offer or contract. None of the statements contained in these particulars are to be relied on as statements or representatives of fact and intending purchasers must satisfy themselves by inspection or otherwise to the correctness of each of the statements contained in these particulars. The vendor does not make or give, neither Harry Clarke & Company, nor any person in it's employment has any authority to make or give any representation or warranty whatever in relation to this property. All dimensions are approximate.