



16 Sandown Drive, Kilfennan, Londonderry, BT47 5PF

Offers Over £165,000



3



1



2



E40 / D67

Nestled in the charming area of Kilfennan, Londonderry, this delightful semi-detached house on Sandown Drive offers a perfect blend of comfort and convenience. Spanning an impressive 1,044 square feet, the property boasts two inviting reception rooms, ideal for both relaxation and entertaining guests.

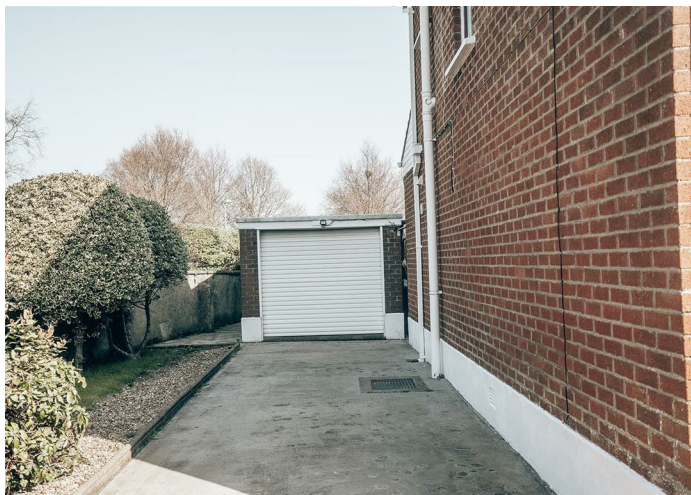
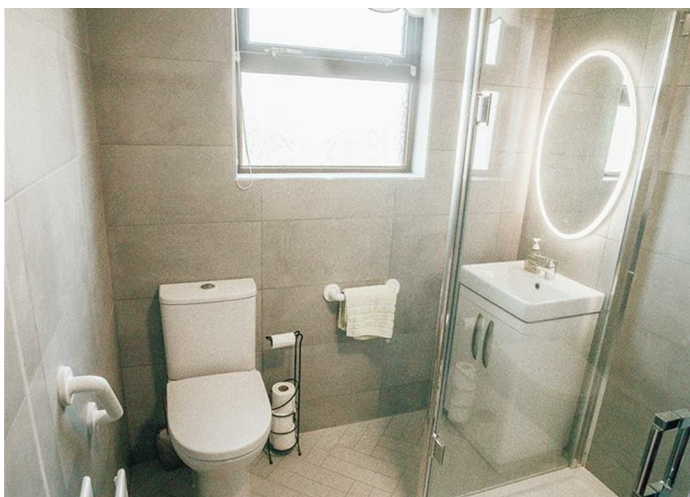
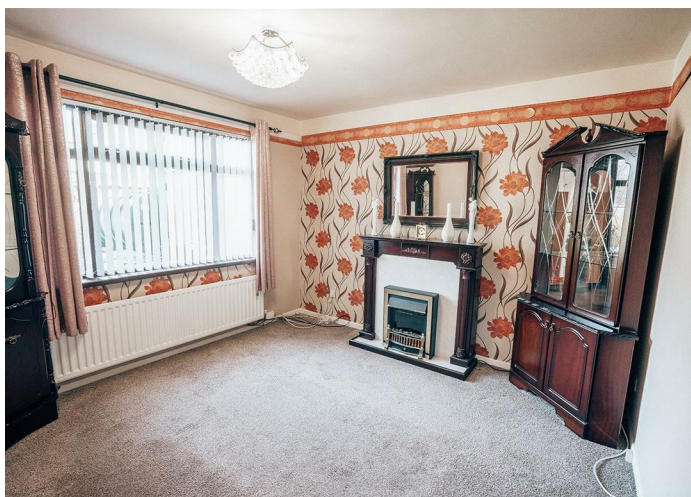
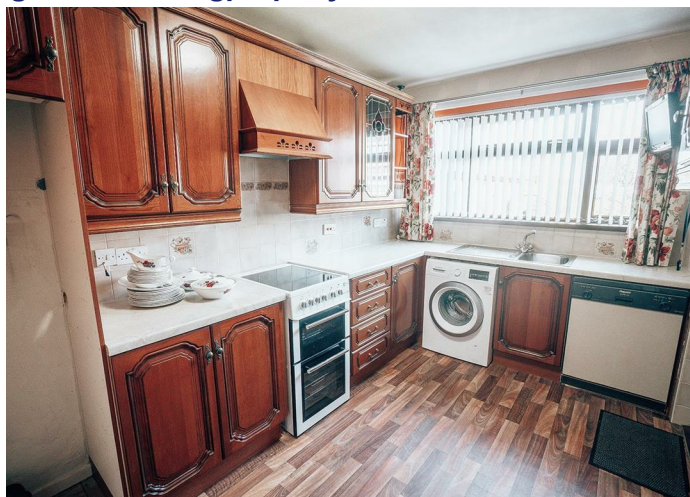
The home features three well-proportioned bedrooms, providing ample space for families or those seeking a home office. The shower room has been recently refitted and has been thoughtfully designed, catering to the needs of modern living.

One of the standout features of this property is the generous parking space, accommodating up to three vehicles, which is a rare find in this area.

With its appealing layout and practical amenities, this semi-detached house is an excellent opportunity for anyone looking to settle in a friendly neighbourhood. Whether you are a first-time buyer or seeking a family home, this property is sure to meet your needs. Don't miss the chance to make this lovely house your new home.

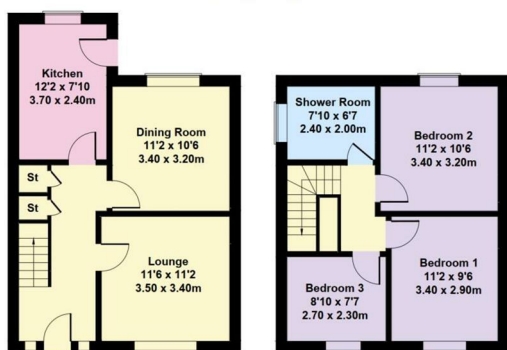
- Semi-Detached House
- 2 x Reception Room
- Oil Fired Heating
- uPVC Fascia & Soffits
- Convenient Location To All Amenities
- 3 x Bedroom
- Recently Refitted Shower Room
- uPVC Double Glazed Windows
- Detached Garage
- Perfect First Time Buyer Home





### 16 Sandown Drive

Approximate Gross Internal Area  
904 sq ft - 84 sq m



GROUND FLOOR

FIRST FLOOR

Not to Scale. Produced by The Plan Portal 2025  
For Illustrative Purposes Only.

