



45 The Salmon Leap Castleroe Road, Coleraine, BT51 3TX

Offers Over £199,950



3



3



1



B82 / B82

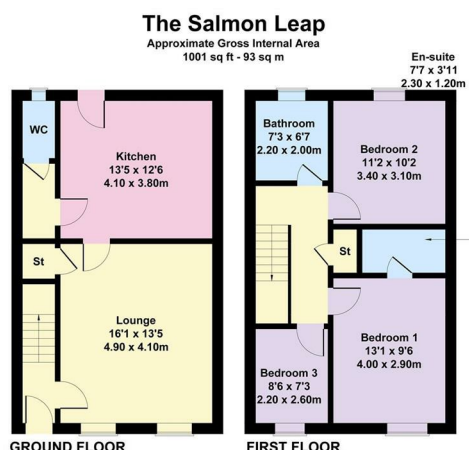
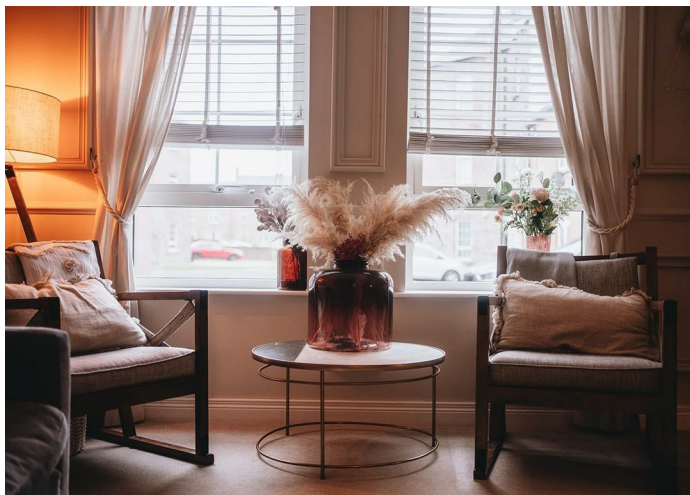
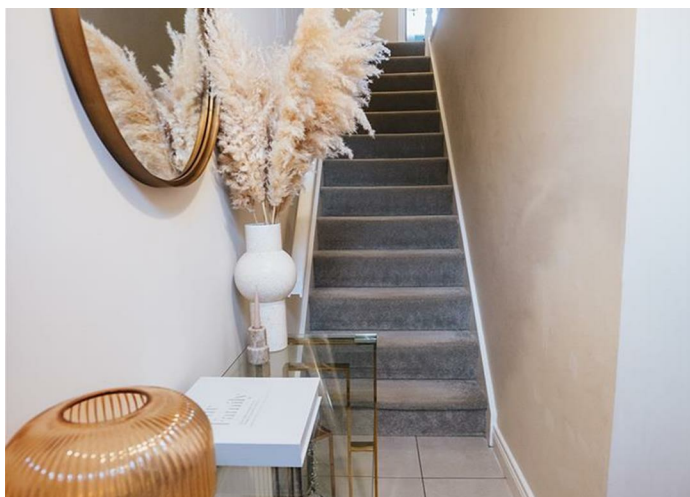
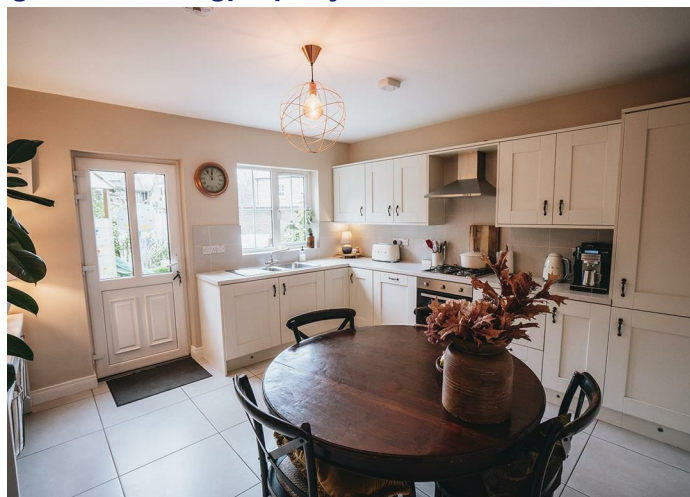
Nestled on the charming Castleroe Road in Coleraine, this delightful townhouse offers a perfect blend of modern living and comfort. Built in 2019, the property boasts a generous 1,180 square feet of well-designed space, making it an ideal home for families or professionals seeking a tranquil yet convenient location.

Upon entering, you are welcomed into a bright and airy reception room, perfect for relaxation or entertaining guests. The house features three spacious bedrooms, providing ample accommodation for family members or guests. Each of the three bathrooms is thoughtfully designed, ensuring convenience and privacy for all.

The property is set in a desirable area, with easy access to local amenities, schools, and parks, making it an excellent choice for those who appreciate community living. Additionally, the house includes communal parking, a valuable feature in today's busy world.

With its modern construction and stylish finishes, this home is ready for you to move in and make it your own. Whether you are looking to buy or rent, this property on Castleroe Road presents a wonderful opportunity to enjoy contemporary living in a sought-after location. Don't miss the chance to view this exceptional home.

- Stunning End Townhouse
- 1 x Reception Room
- Gas Heating
- Convenient Location
- 3 x Bedroom
- Finished To Exceptional Standard
- uPVC Double Glazed Windows
- Ideal First Time Buyer Home



Not to Scale. Produced by The Plan Portal 2025
For Illustrative Purposes Only.

