



Redford Road

Cullybackey, Ballymena, BT43 5PR

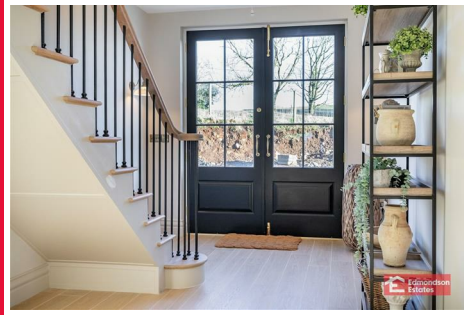
Offers Over £625,000



Redford Road

Cullybackey, Ballymena, BT43 5PR

Offers Over £625,000



ACCOMMODATION

GROUND FLOOR

ENTRANCE HALL

LOUNGE

HOME OFFICE/PLAYROOM

OPEN PLAN KITCHEN/DINING/LIVING AREA

Deluxe fitted kitchen with matching island unit supplied by Wood Style Kitchens. Appliances to include 5ft fridge and 5ft fridge freezer, dishwasher, range oven, wine chiller, gas free standing floor to ceiling glass gas fire which can be viewed from both sides with 5 kw heat. (Gas fire supplied by Wilson fireplaces).

BOOT ROOM

FURNISHED CLOAKROOM

WALK-IN PANTRY

FIRST FLOOR

LANDING

PRINCIPAL BEDROOM

DELUXE EN-SUITE

Fully tiled walls and floors.

WALK-IN WARDROBE

BEDROOM 2

DELUXE EN-SUITE

Fully tiled walls and floors.

BEDROOM 3

WALK-IN WARDROBE

BEDROOM 4

WALK-IN WARDROBE

LAUNDRY ROOM

FAMILY BATHROOM

Fully tiled walls and floors.

EXTERNAL

Private driveway in tarmac.

Mature gardens with patio area.

DETACHED DOUBLE GARAGE



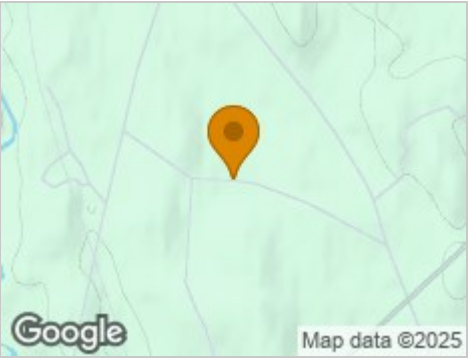
Road Map



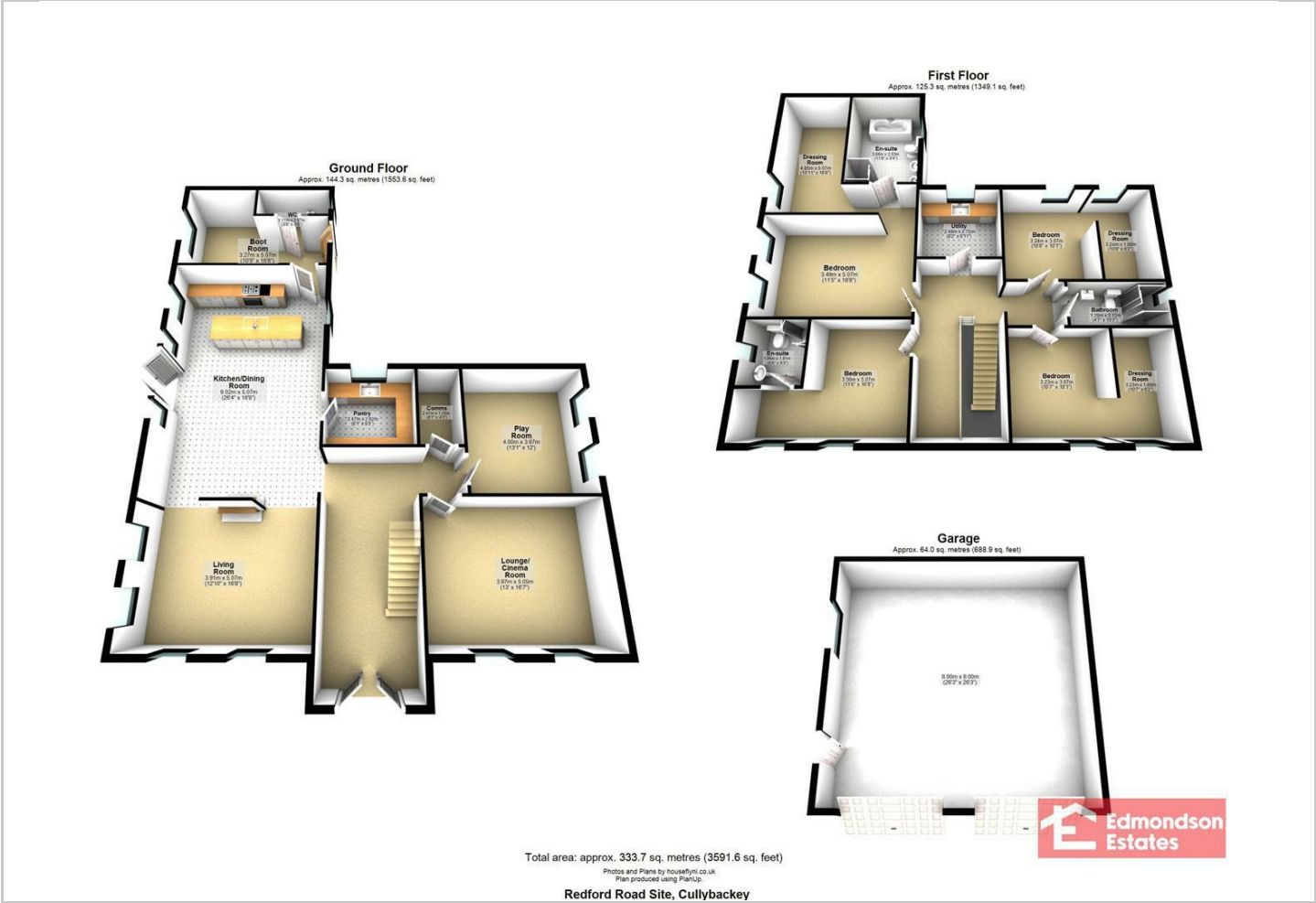
Hybrid Map



Terrain Map



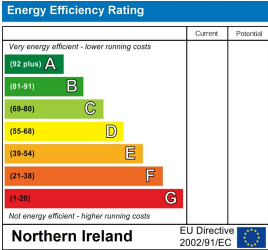
Floor Plan



Viewing

Please contact our Ballymena Office on 02825655733 if you wish to arrange a viewing appointment for this property or require further information.

Energy Efficiency Graph



These particulars, whilst believed to be accurate are set out as a general outline only for guidance and do not constitute any part of an offer or contract. Intending purchasers should not rely on them as statements of representation of fact, but must satisfy themselves by inspection or otherwise as to their accuracy. No person in this firms employment has the authority to make or give any representation or warranty in respect of the property. Edmondson Estates have not tested any services, equipment, or facilities within the premises and will not be liable, in negligence or otherwise, for any loss arising from the use of these particulars.