



## 25 Loan Road

Cullybackey, Ballymena, BT42 1ES

Offers Around £169,950





# 25 Loan Road

Cullybackey, Ballymena, BT42 1ES

Offers Around £169,950



## GROUND FLOOR

### Living Room

15'4" x 10'9" (4.68 x 3.29)

Refitted composite door. Period style open fire with back boiler, and stone hearth. Exposed beams.

### Dining Room

12'3" x 8'7" (3.752 x 2.64)

### Kitchen

5'10" x 3'10" (1.787 x 1.19)

Oak effect high and low units. Walk in under stairs store cupboard with space for fridge/freezer. 1 1/2 stainless steel sink. Electric hob and oven. Breakfast bar. Tiled flooring and splashback. Refitted back door.

## FIRST FLOOR

Landing with hotpress cupboard.

### Bedroom 1 - Front

9'6" x 8'0" (2.90 x 2.45)

### Bedroom 2 - Front

9'6" x 11'5" (2.90 x 3.48)

Built in slide robes.

### Family Bathroom

5'6" x 7'9" (1.68 x 2.37)

Large shower. WC and WHB. 1/2 wall tiling.

## OUTSIDE

### Attached Garage

17'8" x 10'5" (5.40 x 3.20)

Double doors. OFCH boiler. Power and lighting. Plumbed for washing machine.

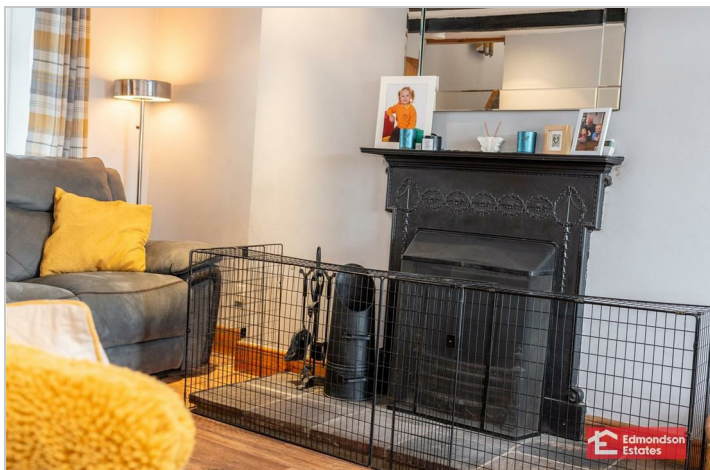
### Detached Garage

14'9" x 10'5" (4.50 x 3.20)

Roller door.

### Gardens

Extensive corner plot. Gravelled off street parking area to the rear for multiple vehicles. Side gardens laid in lawns.



Tel: 02825655733







Road Map



Hybrid Map



Terrain Map



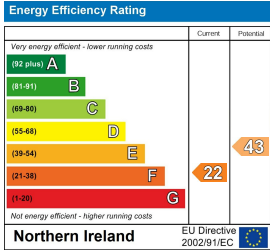
Floor Plan



Viewing

Please contact our Ballymena Office on 02825655733 if you wish to arrange a viewing appointment for this property or require further information.

Energy Efficiency Graph



These particulars, whilst believed to be accurate are set out as a general outline only for guidance and do not constitute any part of an offer or contract. Intending purchasers should not rely on them as statements of representation of fact, but must satisfy themselves by inspection or otherwise as to their accuracy. No person in this firms employment has the authority to make or give any representation or warranty in respect of the property. Edmondson Estates have not tested any services, equipment, or facilities within the premises and will not be liable, in negligence or otherwise, for any loss arising from the use of these particulars.