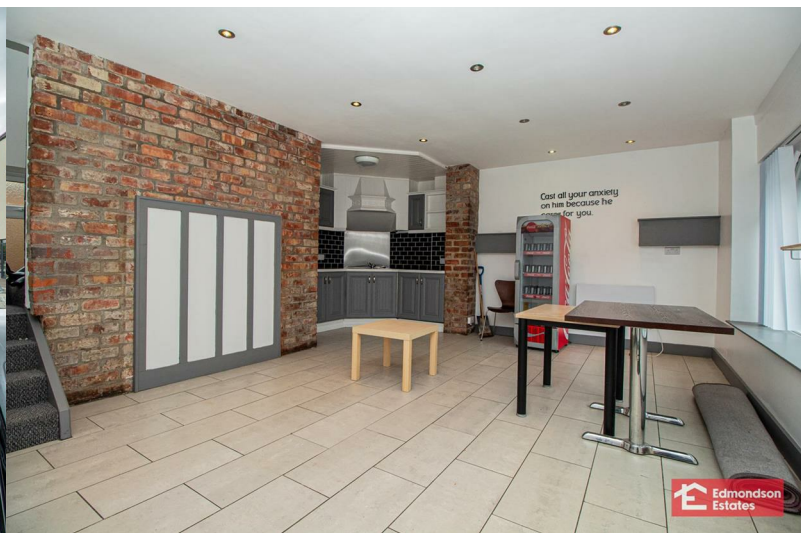




6 The Diamond

Ahoghill, Ballymena, BT42 1JZ

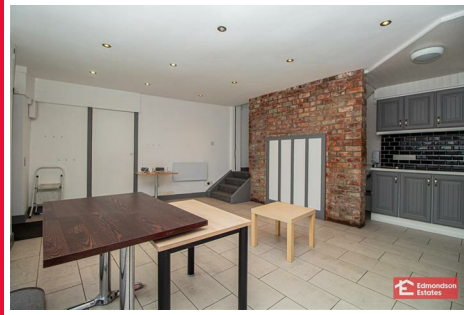
£600 Per Month



6 The Diamond

Ahoghill, Ballymena, BT42 1JZ

£600 Per Month



GROUND FLOOR

Retail Area

20'0" x 15'8" (max) (6.12 x 4.8 (max))

Tea Prep

WC

WC and WHB.

FIRST FLOOR

Landing

Open Plan Office

12'7" x 20'4" (3.86 x 6.20)



Road Map



Hybrid Map



Terrain Map



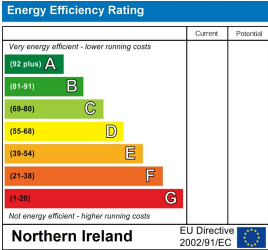
Floor Plan



Viewing

Please contact our Ballymena Office on 02825655733 if you wish to arrange a viewing appointment for this property or require further information.

Energy Efficiency Graph



These particulars, whilst believed to be accurate are set out as a general outline only for guidance and do not constitute any part of an offer or contract. Intending purchasers should not rely on them as statements of representation of fact, but must satisfy themselves by inspection or otherwise as to their accuracy. No person in this firms employment has the authority to make or give any representation or warranty in respect of the property. Edmondson Estates have not tested any services, equipment, or facilities within the premises and will not be liable, in negligence or otherwise, for any loss arising from the use of these particulars.