



THE DICKSON APARTMENTS

2 BED APARTMENTS | c. 710 sq ft / 66 sq m approx

Site 16 The Dickson, Alexandra Park Avenue, Belfast, BT15 3ES

Asking Price £144,950

EPC Rating

ALEXANDRA PARK AVENUE



Floor plans are not to scale and all dimensions are approximate



First Floor - Apartments 14 & 17

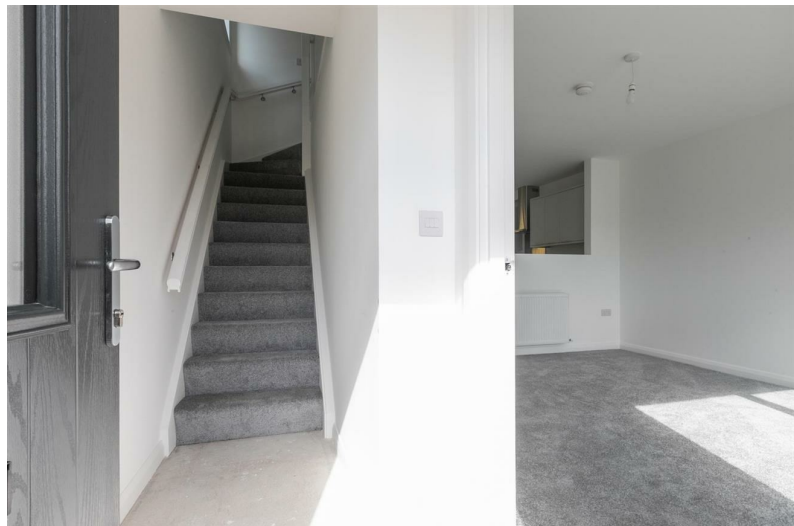


Second Floor - Apartments 15 & 18

Ground Floor - Apartments 13 & 16			
Living Kitchen Dining (m ²)	ft: 24'7" x 13'1"	m: 7.53 x 3.99	
Bedroom 1	ft: 11'2" x 11'1"	m: 3.40 x 3.36	
Bedroom 2	ft: 12'3" x 8'2"	m: 3.73 x 2.50	
Bathroom	ft: 8'2" x 6'10"	m: 2.48 x 2.10	

THE DICKSON APARTMENTS

2 BED APARTMENTS | c. 710 sq ft / 66 sq m approx





PROPERTY DESCRIPTION

ACCOMMODATION

LIVING / KITCHEN / DINING 24'8" x 13'1"

BEDROOM 1 11'1" x 11'0"

BEDROOM 2 12'2" x 8'2"

BATHROOM 8'1" x 6'10"

PLEASE NOTE:

Images are examples of the finish and specification fitted to Site 14 Crosscollyer Street for illustration purposes only.





Energy Efficiency Rating

	Current	Potential
Very energy efficient - lower running costs		
(92 plus) A		
(81-91) B		
(69-80) C		
(55-68) D		
(39-54) E		
(21-38) F		
(1-20) G		
Not energy efficient - higher running costs		
Northern Ireland	EU Directive 2002/91/EC	

Agents Note: Whilst every care has been taken to prepare these sales particulars, they are for guidance purposes only. All measurements are approximate are for general guidance purposes only and whilst every care has been taken to ensure their accuracy, they should not be relied upon and potential buyers are advised to recheck the measurements

INVESTORS IN PEOPLE
We invest in people Gold

PRS Property Redress Scheme

Proudly sponsoring

Northern Ireland Children's Hospice

Awards

Telegraph
PROPERTY AWARDS 2018
in partnership with

Telegraph
PROPERTY AWARDS 2019
in partnership with

Shortlisted
TheNegotiator Awards 2018

Shortlisted
TheNegotiator Awards 2019

THE INVESTORS IN PEOPLE AWARDS 2019
Finalist

TheNegotiator Awards 2019
REGIONAL AGENCY OF THE YEAR NORTHERN IRELAND
GOLD

WE ARE MACMILLAN.
CANCER SUPPORT