



ALEXANDRA  
PARK AVENUE

CGI shown for illustration purposes only

## THE DICKSON APARTMENTS

2 BED APARTMENTS | c. 710 sq ft / 66 sq m approx

Site 16 The Dickson, Alexandra Park Avenue, Belfast, BT15 3ES

Asking Price £139,950

EPC Rating

### ALEXANDRA PARK AVENUE



Floor plans are not to scale and all dimensions are approximate



First Floor - Apartments 14 & 17



Second Floor - Apartments 15 & 18

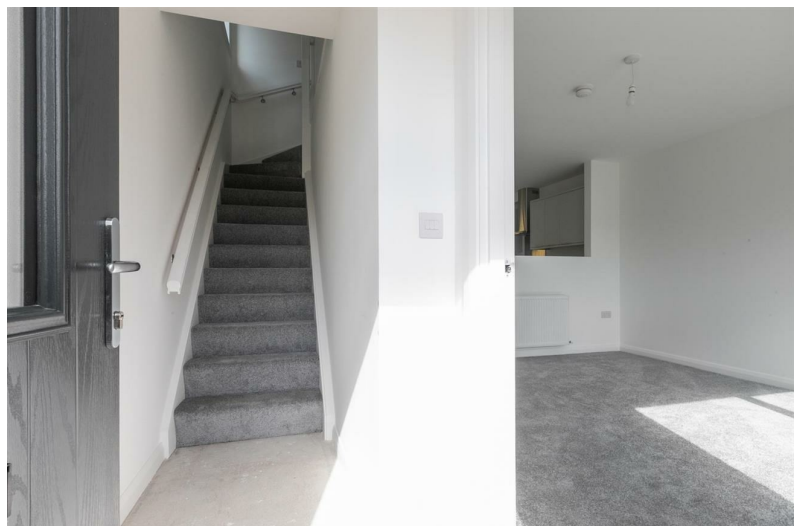
Ground Floor - Apartments 13 & 16			
Living   Kitchen   Dining (m <sup>2</sup> )	ft: 24'7" x 13'1"	m: 7.53 x 3.99	
Bedroom 1	ft: 11'2" x 11'1"	m: 3.40 x 3.36	
Bedroom 2	ft: 12'3" x 8'2"	m: 3.73 x 2.50	
Bathroom	ft: 8'2" x 6'10"	m: 2.48 x 2.10	

First Floor - Apartments 14 & 17			
Living   Kitchen   Dining (m <sup>2</sup> )	ft: 24'7" x 13'1"	m: 7.53 x 3.99	
Bedroom 1	ft: 11'2" x 11'1"	m: 3.40 x 3.36	
Bedroom 2	ft: 12'3" x 8'2"	m: 3.73 x 2.50	
Bathroom	ft: 8'2" x 6'10"	m: 2.48 x 2.10	

Second Floor - Apartments 15 & 18			
Living   Kitchen   Dining (m <sup>2</sup> )	ft: 24'7" x 13'1"	m: 7.53 x 3.99	
Bedroom 1	ft: 11'2" x 11'1"	m: 3.40 x 3.36	
Bedroom 2	ft: 12'3" x 8'2"	m: 3.73 x 2.50	
Bathroom	ft: 8'2" x 6'10"	m: 2.48 x 2.10	

### THE DICKSON APARTMENTS

2 BED APARTMENTS | c. 710 sq ft / 66 sq m approx





## **PROPERTY DESCRIPTION**

### **ACCOMMODATION**

**LIVING / KITCHEN / DINING 24'8" x 13'1"**

**BEDROOM 1 11'1" x 11'0"**

**BEDROOM 2 12'2" x 8'2"**

**BATHROOM 8'1" x 6'10"**

### **PLEASE NOTE:**

Images are examples of the finish and specification fitted to Site 14 Crosscollyer Street for illustration purposes only.







### Energy Efficiency Rating

	Current	Potential
Very energy efficient - lower running costs		
(92 plus) <b>A</b>		
(81-91) <b>B</b>		
(69-80) <b>C</b>		
(55-68) <b>D</b>		
(39-54) <b>E</b>		
(21-38) <b>F</b>		
(1-20) <b>G</b>		
Not energy efficient - higher running costs		

Northern Ireland

EU Directive 2002/91/EC

Agents Note: Whilst every care has been taken to prepare these sales particulars, they are for guidance purposes only. All measurements are approximate are for general guidance purposes only and whilst every care has been taken to ensure their accuracy, they should not be relied upon and potential buyers are advised to recheck the measurements

**INVESTORS IN PEOPLE**  
We invest in people Gold

**PRS** Property Redress Scheme

Proudly sponsoring



Awards

