



15 Tides Turn, Portavogie, Newtownards, BT22 1SH

Set in the modern "Tides" development in the harbour town of Portavogie, this detached home would make an excellent first time or family buy. It has been beautifully presented by its present owner/occupiers and is walk-in ready for the new purchaser.

The property offers 3 good bedrooms, including a spacious master with en-suite shower room, a family bathroom, with both bath & separate shower, a spacious lounge, with multi fuel stove, and an equally spacious kitchen with dining area. It benefits from uPVC double glazing & oil fired central heating whilst, externally, there is a small lawn to the front and a fully enclosed paved patio to the rear with artificial grass area and tarmac parking for several vehicles.

The local beaches are well worth exploring whilst both primary and secondary schools are nearby and Newtownards is within easy reach by road.

Internal viewing is highly recommended.

Offers Around £185,000

15 Tides Turn, Portavogie, Newtownards, BT22 1SH



- Modern detached home
- Beautifully presented throughout
- 3 bedrooms - master en-suite
- Lounge with multi fuel stove
- Kitchen with dining area & patio doors to rear garden
- Family bathroom with both bath & separate shower
- uPVC double glazing - Oil fired central heating
- Low maintenance gardens to front & rear
- Tarmac parking area
- A short distance from the beach

Entrance

Entrance hall

17x8'9 (5.18mx2.67m)

Lounge

18x12'8 (5.49mx3.86m)

Kitchen/diner

22x10'9 (6.71mx3.28m)

WC

7'5x3'4 (2.26mx1.02m)

Landing

Bathroom

8'6x7'4 (2.59mx2.24m)

Bedroom 1

19'4x11'4 (5.89mx3.45m)

Ensuite shower room

8'4x3'9 (2.54mx1.14m)

Bedroom 2

10'9x10'1 (3.28mx3.07m)

Bedroom 3

10'2x8 (3.10mx2.44m)

Outside

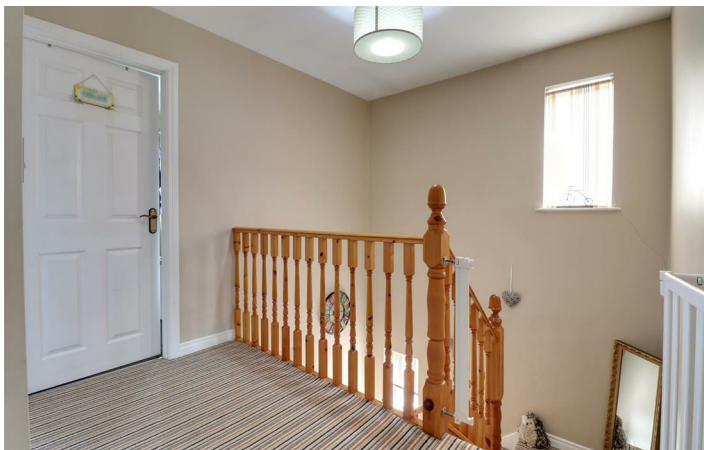
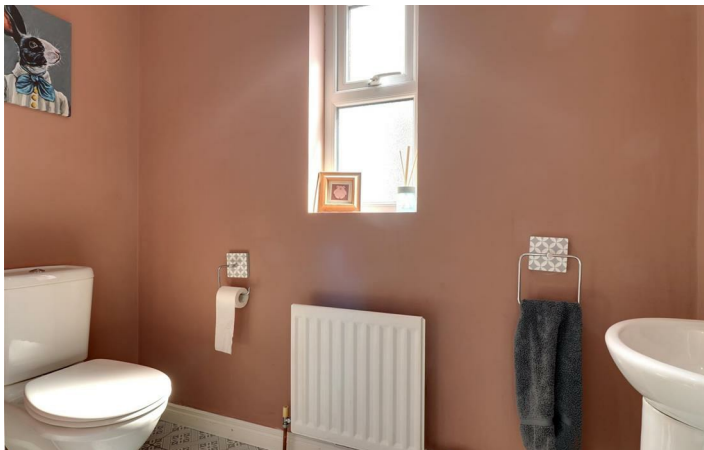
Tenure

Property misdescriptions



Directions

From New Road turn into the Tides development and turn left at the first T junction. At the next T junction turn right and number 15 is on the left at the end of the cul de sac.



Floor Plan



These particulars, whilst believed to be accurate are set out as a general outline only for guidance and do not constitute any part of an offer or contract. Intending purchasers should not rely on them as statements of representation of fact, but must satisfy themselves by inspection or otherwise as to their accuracy. No person in this firms employment has the authority to make or give any representation or warranty in respect of the property.

