

Tim Martin
— .co.uk



Apartment 3
2-6 Birch Lane
Saintfield
BT24 7FP

Offers Around
£160,000

www.timmartin.co.uk
Telephone 028 91 878956

SUMMARY

A spacious, tastefully presented first floor apartment, in this much sought after development in Saintfield.

The apartment includes, open plan lounge and a luxuriously appointed kitchen, master bedroom en suite and a second bedroom adjacent to the principal bathroom.

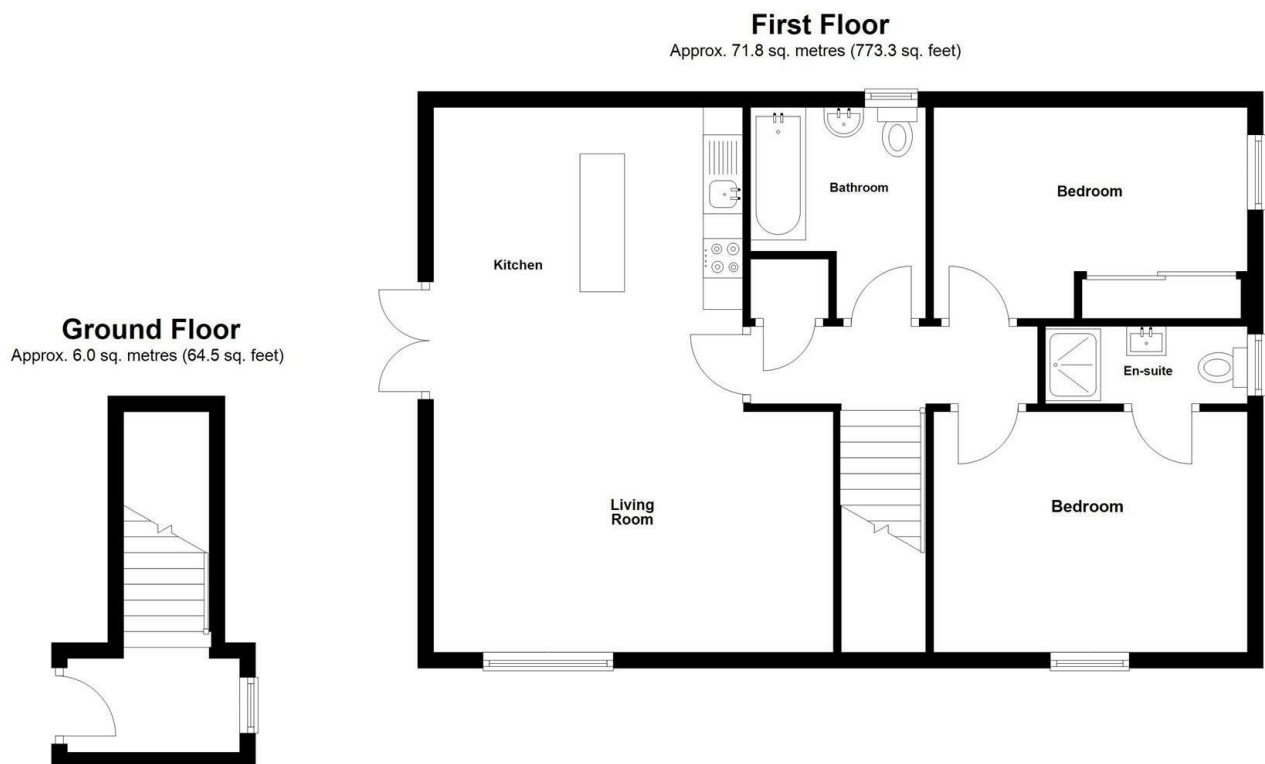
Fitted with double glazing and oil fired central heating, the apartment enjoys the benefit of a delightful private garden and two designated parking spaces to the side.

The property is approached from its own private entrance leading to the first floor and enjoys the benefit of a floored roofspace providing additional storage space.

The apartment is ideally situated within easy walking distance of the shops, churches and amenities in Saintfield and public transport is a short walk from the property.

FEATURES

- Spacious Tastefully Presented First Floor Apartment
- Open Plan Lounge And Luxuriously Appointed Kitchen
- Two Bedrooms Including Master Bedroom En Suite
- Principal Bathroom
- Partially Floored Roofspace
- Enclosed Garden To Side
- Two Designated Car Parking Spaces
- Approached By Its Own Private Entrance
- Within Easy Walking Distance Saintfield Village and Public Transport
- Ideal For The First Time Buyer Or Those Wishing To Downsize



Total area: approx. 77.8 sq. metres (837.9 sq. feet)

Entrance Hall

Porcelain flagged floor; stairs to first floor.

Landing

Built-in cloak cupboard.

Lounge / Kitchen 22'11 x 16'7 (6.99m x 5.05m)

Ceramic and porcelain flagged floors; tv aerial connection point; semi-vaulted ceiling with LED spot lighting; glazed patio door; floor level cupboards and formica worktops; integrated Normende electric oven and matching microwave oven; Normende 4 ring ceramic hob with stainless steel extractor unit over; New World fridge/freezer; matching island unit with 1½ tub stainless steel sink unit with chrome mixer taps in a formica surround, nest of four drawers and cupboards under; Indesit washer; feature glazed cupboards; Velux ceiling window.

Bedroom 1 13'1 x 9'11 (3.99m x 3.02m)**En Suite Shower Room 9'1 x 3'1 (2.77m x 0.94m)**

White suite comprising tiled shower with thermostatically controlled shower; sliding glass shower door and side panel; floating wash hand basin with chrome mono mixer tap; close coupled wc; ceramic tiled walls and floor; LED spot lighting; extractor fan.

Bedroom 2 13'0 x 8'10 (3.96m x 2.69m)

Built-in wardrobe with mirrored sliding doors.

Bathroom 8'9 x 7'3 (2.67m x 2.21m)

Maximum Measurements

White suite comprising, panel bath with chrome mixer taps and telephone shower attachment; floating wash hand basin with chrome mono mixer tap; close coupled wc; ceramic tiled walls and floor; LED spot lighting; extractor fan.

Roofspace

Partially floored.

Outside

Two designated car parking spaces.

Gardens

Enclosed garden to side laid out in lawn with a well stocked flowerbed planted with spring flowering bulbs, Camellia, Hydrangea, Forest Flame and herbaceous plants; Warmflow oil fired boiler; PVC oil storage tank.

Management Fee

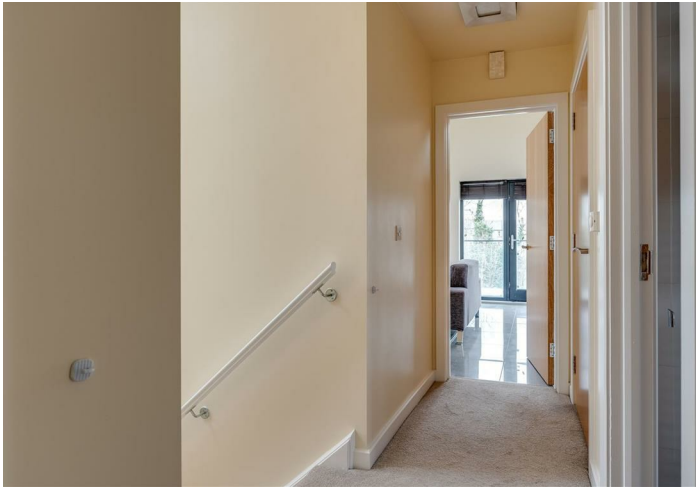
£60 per month (approximately) paid to Broadleaf Management Company

Tenure

Freehold

Capital / Rateable Value

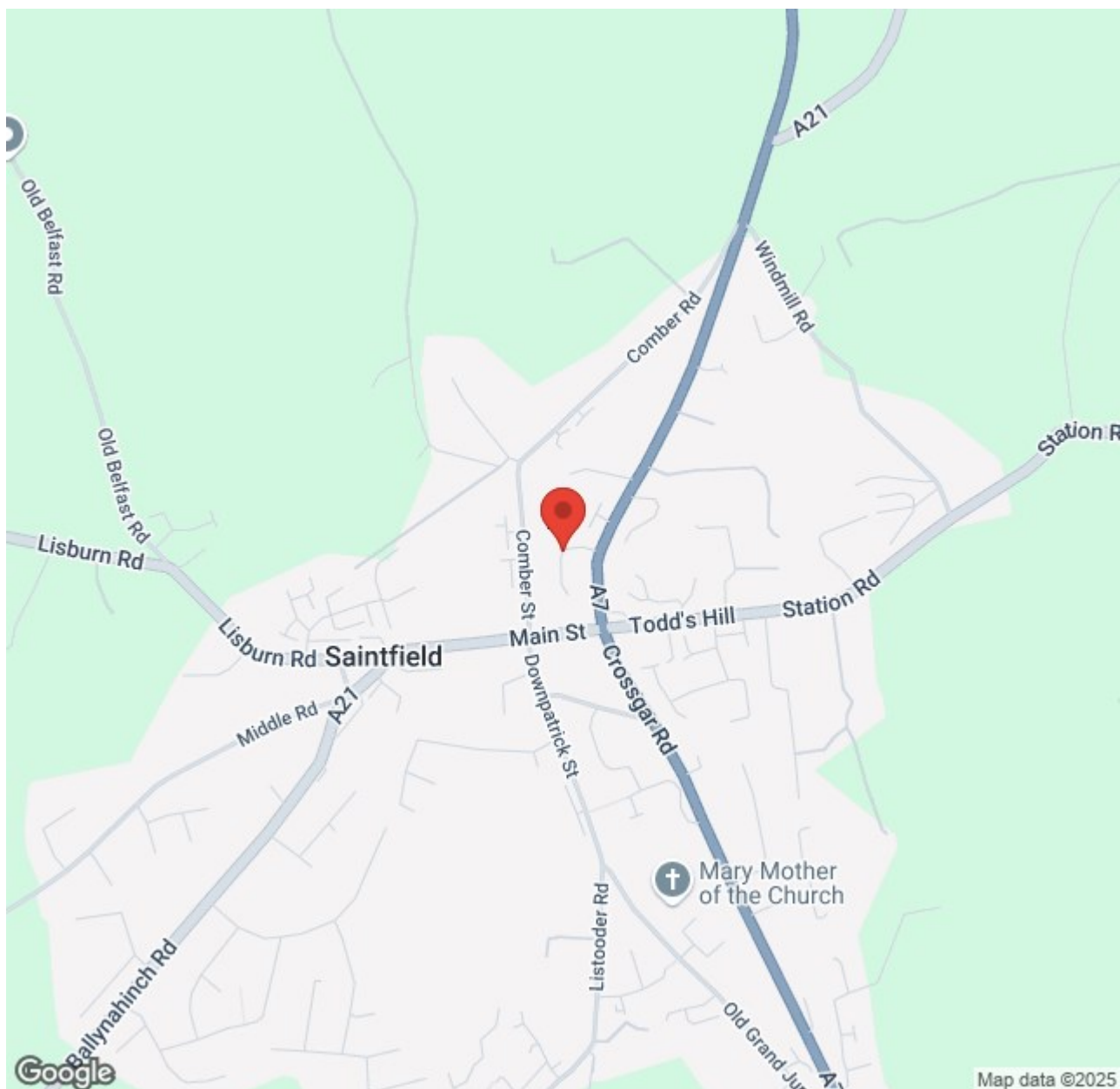
£85,000. Rates Payable = £826.03 Per Annum (Approximately)











| Energy Efficiency Rating | | |
|---|---------|-----------|
| | Current | Potential |
| Very energy efficient - lower running costs | | |
| (92 plus) A | | |
| (81-91) B | | |
| (69-80) C | | |
| (55-68) D | | |
| (39-54) E | | |
| (21-38) F | | |
| (1-20) G | | |
| Not energy efficient - higher running costs | | |

Saintfield
1B Main Street, Saintfield, BT24 7AA
T 028 97 568300

Comber
27 Castle Street, Comber, BT23 5DY
T 028 91 8789596

Tim Martin & Company for themselves and for the vendors of this property have endeavoured to prepare these sales details as accurate and reliable as possible for the guidance of intending purchasers or lessees. These particulars are given for general guidance only and do not constitute any part of an offer or contract. The seller and us as agents, do not make any representation or give any warranty in relation to the property. We would recommend that all information contained in this brochure about the property be verified by yourself or professional advisors. Services, fittings and equipment referred to in the sales details have not been tested (unless otherwise stated) and no warranty will be given as to their condition. All measurements contained within this brochure are approximate. Please contact us prior to viewing the property. If there is any point of particular importance to you we would be pleased to provide additional information or make further enquiries. We will also confirm that the property remains available. This is particularly important if you are contemplating travelling some distance to view the property.