

Tim Martin
— .co.uk



**8 Bulls Eye Park
Downpatrick
BT30 6RX**

**Offers Around
£375,000**

www.timmartin.co.uk
Telephone 028 91 878956

SUMMARY

This spacious family residence offers a rare opportunity to acquire an exceptional home in one of the most desirable locations in Downpatrick.

Set in it's own grounds extending to over 1 acres with perhaps the most outstanding elevated position in the area. It enjoys spectacular views towards Strangford Lough, the Craiganlet Hills, Scrabo, and the Ards Peninsula and to the South of the Mourne Mountains and Dromara Hills creating magical sunrises and sunsets.

The detached residence which has been renovated and decorated recently offers generous accommodation on two floors designed to enjoy the views while providing versatility to suit most family demands. It is within a peaceful and quiet area, yet offers convenient access to the town.

The property is located within walking distance to the Quoile River an area of outstanding natural beauty with Downpatrick golf club just around the corner.

Downpatrick town centre is within a short walking distance which offers a good selection of shops, schools and sport facilities and is an easy commute to Belfast city centre.

FEATURES

- Spacious Detached Family Residence in this Sought After Area of Downpatrick
- Spacious Lounge with Cast Iron Stove and Built In Storage
- Five Bedrooms, including Master Bedroom with En-Suite
- Exceptional Views of the Countryside
- Extensive Mature Gardens Extending to Over 1.3 acres
- Spacious Driveway Leading To The Integral Double Garage With Twin Roller Doors
- Downstairs WC, Study And Laundry Room
- Short Walking Distance to Downpatrick
- Convenient Commuting Distance To Belfast City Centre

Reception Hall

Approached through hardwood double doors; marble tiled floor; wall light.

Cloakroom

Range of coat hooks and storage shelves.

Study 8'8" x 8'8" (2.64 x 2.64)

Range of built-in bookshelves; oak tongue and groove floor.

Lounge 19'10" x 13'11" (6.05 x 4.24)

Approached through glazed double door; hole in the wall fireplace with enclosed cast iron stove on black granite hearth; twin display recess with plain glass display shelves; over storage cupboards; two up lights; TV aerial connections; oak tongue and groove floor.

Dining Room 14'2" x 11'3" (including bay window) (4.34 x 3.45 (including bay window))

Approached through glazed double doors; corniced ceiling; two wall lights; wood laminate floor.

Hallway

Storage cupboard under stairs; leading to:-

Family Room 12'11" x 9'10" (3.94 x 3)

Glazed patio door and side panel to raised and enclosed timber decking; wood effect lino flooring; TV aerial connection point.

Kitchen 13'7" x 9'6" (4.14 x 2.9)

1½ tub compound sink unit with matching mixer taps; range of painted finish eye and floor level cupboards and drawers; feature high gloss burgundy eye and floor level cupboards with housing for microwave and fridge / freezer; integrated Rangemaster professional electric Range cooker; Stainless steel splash back and Rangemaster extractor unit and light over; space and plumbing for dishwasher; marble worktops matching island unit with fitted cupboards, drawers and bookshelf; tiled floor; LED ceiling lighting and concealed under cupboard lighting; part tiled walls; open plan to raised breakfast bar.

Breakfast Room 9'7" x 9'6" (2.92 x 2.9)

Tiled floor; painted tongue and groove wall panelling.

Laundry Room 9'8" x 6'10" (2.95 x 2.08)

Stainless steel sink recessed in formica surround with mixer taps; range of eye and floor level cupboards; PVC tiled floor; part tiled walls; plumbed and space for washing machine and tumble dryer; fluorescent light.

Rear Hall

Built in bench seat with storage

WC

White suite comprising closed coupled wc; vanity unit with ceramic bowl and chrome mono mixer tap; tiled floor.

Bathroom 9'1" x 8'0" (2.77 x 2.44)

Modern white suite comprising sculptured bath with chrome mixer taps; adjustable and rain shower heads; glass shower panel; close coupled WC; floating vanity unit with twin wash hand basins and chrome mono mixer taps; cupboard under; ½ tiled walls; tiled floor; heated chrome towel radiator; electric shaver socket; linen cupboard with radiator.

Bedroom 1 14'1" x 11'0" (4.29 x 3.35)

Two double built-in wardrobes; two reading lights; glazed patio door and side panel to gardens; recessed ceiling lighting.

Bedroom 2 12'7" x 8'10" (3.84 x 2.69)

Double built-in wardrobe with cupboards over, matching work station; recessed spot lighting.

First Floor

Landing

Two wall lights; velux window.

Master Bedroom 20'9" x 11'5" (6.32 x 3.48)

Fitted window seat with storage; Velux window; 12 volt ceiling lighting; twin wall lights.

Roofspace 24'0 x 20'3 (7.32m x 6.10m'0.91m)

Maximum Measurements

Floored roofspace with light points providing enormous potential for further accommodation.

Dressing Room 7'4" x 2'11" (2.24 x .89)

Fitted clothes rail with storage shelves; fluorescent light; door to roof space.

Shower Room 14'0" x 8'7" (4.27 x 2.62)

White suite comprising panelled bath fitted with chrome pillar mixer taps and telephone shower attachment, chrome side handles; floating vanity unit with twin wash hand basin and chrome mixer taps; drawers under; illuminated mirror and shaver socket over; rectangle shower cubicle with mermaid clad walls and glass sliding shower doors and side panels; Bristan electric shower; close coupled wc; 12 volt ceiling spot lighting; vertical feature radiator.

Roofspace 24'0 x 20'0 (approx) (7.32m x 6.10m (approx))

Part floored and insulated

Bedroom 4 13'3" x 8'9" (4.04 x 2.67)

Max Measurements

Two tiered.

Bedroom 5 14'11" x 13'5" (4.55 x 4.09)

Built in furniture.

Outside

Sweeping bitmac drive to ample parking to front or residence and garaging.

Double Integral Garage 18'10" x 18'9" (5.74 x 5.72)

Twin roller doors; fluorescent light and power points; built-in work bench.

Log Store

Integral Store Room

Garden

Extensive mature grounds extending to over 1.3 acres have been planted with a fine selection of ornamental and flowering shrubs and trees providing colour and interest throughout the year.

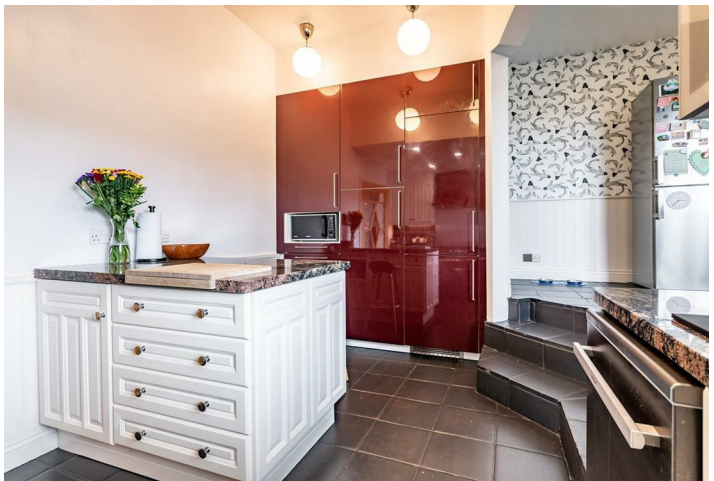
Ash, Beech, Sycamore and Rowan provide a pleasing back drop to the gardens. The rolling lawns surround the residence enhanced by a raised timber decking located to take full advantage of the views; flagged patio with brick BBQ; gravelled flowerbeds and flagged paths add to the enjoyment of the gardens.

Capital / Rateable Value

£245,000. Rates Payable = £2,380.91 per annum (approx)

Tenure

Freehold





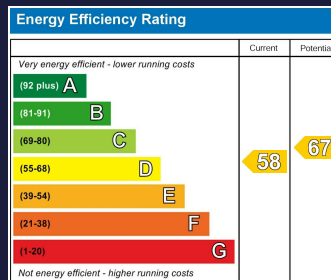




Total area: approx. 233.1 sq. metres (2508.8 sq. feet)

For illustrative purposes only. Not to scale. Whilst every effort has been made to ensure the accuracy of the floor plan all measurements are approximate and no responsibility is taken for any error, omission or measurement. Plan produced using PlanUp.

8 Bullseye Park, Downpatrick



Comber
27 Castle Street, Comber, BT23 5DY
T 028 91 8789596

Saintfield
1B Main Street, Saintfield, BT24 7AA
T 028 97 568300

Tim Martin & Company for themselves and for the vendors of this property have endeavoured to prepare these sales details as accurate and reliable as possible for the guidance of intending purchasers or lessees. These particulars are given for general guidance only and do not constitute any part of an offer or contract. The seller and us as agents, do not make any representation or give any warranty in relation to the property. We would recommend that all information contained in this brochure about the property be verified by yourself or professional advisors. Services, fittings and equipment referred to in the sales details have not been tested (unless otherwise stated) and no warranty will be given as to their condition. All measurements contained within this brochure are approximate. Please contact us prior to viewing the property. If there is any point of particular importance to you we would be pleased to provide additional information or make further enquiries. We will also confirm that the property remains available. This is particularly important if you are contemplating travelling some distance to view the property.