

Tim Martin
— .co.uk



53 Spa Road
Ballynahinch
BT24 8PT

Offers Around
£299,950

www.timmartin.co.uk
Telephone 028 91 878956

SUMMARY

An immaculately presented detached chalet bungalow set on an elevated position enjoying pleasing views over the surrounding countryside

The bungalow, set in spacious mature gardens, enjoys an open aspect to front and rear and has been tastefully renovated in recent years. The accommodation is modern and generous and offers versatility to suit most families needs.

The ground floor hosts an open plan integrated kitchen, lounge and family room, two or three bedrooms and family bathroom. Upstairs features principal bedroom with an en suite. The property is fitted with oil fired heating and double glazing. Externally, the bitmac drive leading to the internal garage provide parking for up to four vehicles.

The property is ideally located a short drive from Spa golf club, Ballynahinch Rugby and Football Clubs, delightful local walks, Montalto Estate and with the Mourne Mountains a short drive away.

FEATURES

- Immaculacy Presented Chalet Bungalow Set on an Elevated Position
- Open Planned Quality Integrated Kitchen / Dining Room
- Two and Half Reception Rooms
- Three / Four Good Sized Bedrooms
- Principal Suite with En Suite Bathroom
- Double Glazing and Oil Fired Central Heating
- Generous Mature Garden
- Pleasing Rural Views
- Great Local Sports Clubs and Walks

Reception Hall

Polished oak tongue and groove floor; telephone and open reach connection points; corniced ceiling; 12 volt spotlights.

Lounge 13'7 x 12'11 (4.14m x 3.94m)

Polished black granite fireplace and hearth with white marble surround; corniced ceiling; polished oak tongue and groove floor; feature recessed stone finished log store; TV aerial connection point.

Family Room 13'8 x 13'1 (including bay window) (4.17m x 3.99m (including bay window))

Stone finished inglenook fireplace with Arizona enclosed cast iron stone on slate hearth with timber beam mantle over; polished oak tongue and groove floor; corniced ceiling; TV aerial connection point; feature timber panelled wall.

Kitchen / Dining 20'4 x 12'3 (6.20m x 3.73m)

Maximum Measurements

1½ tub ceramic single drainer sink unit with chrome swan neck mixer taps; good range of laminate eye and floor level cupboards and drawers matching leaded and glazed display cupboards and open display shelves; formica worktops; integrated Creda Camargue electric oven and 4 ring hob with two gas and two solid state rings; pull out canopy; concealing extractor unit and light; part tiled walls; space for fridge / freezer; LED ceiling spotlights; glazed double doors to patio.

Bedroom 1 10'7" x 8'11" (3.23m x 2.72m)

(Currently used as a study)

Polished oak tongue and groove floor; corniced ceiling.

Bedroom 2 12'6 x 12'3 (3.81m x 3.73m)

Polished oak tongue and groove floor; LED ceiling spotlights and reading lights; corniced ceiling.

Principal Bathroom 9'11 x 8'7 (3.02m x 2.62m)

Contemporary white suite comprising free standing slipper bath on chrome ball and claw feet; floor mounted chrome pillar mixer tap with shower attachment; walk in shower with PVC clad walls; multi head chrome thermostatically controlled shower; two recessed toiletries shelves; wireless Bluetooth speaker with surround sound; floating vanity unit with ceramic bowl and chrome mixer taps; cupboards under with illuminated mirror over; concealed WC; LED spotlights and extractor fan; recessed radiator; PVC tiled floor; corniced ceiling.

First Floor Landing

Pine furnished staircase with ceiling Velux window; leading to:-

Bedroom 3 14'3 x 14'1 (4.34m x 4.29m)

Maximum Measurements

Two Velux ceiling windows; TV aerial connection point; limited head height.

En Suite Bathroom 8'6 x 5'9 (2.59m x 1.75m)

Maximum Measurements

Modern white suite comprising panelled bath with Redring Plus Extra electric shower and sliding glass shower panels; pedestal wash hand basin; close coupled WC; built in storage cupboard; Velux ceiling window; part tiled walls; extractor fan.

Spacious Bitmac Drive Leading To:-

Integral Garage 20'7 x 9'10 (6.27m x 3.00m)

Up and over door; fluorescent light and power points; double drainer stainless steel sink unit with mixer taps; plumbed for washing machine.

Grounds

Generous garden to front laid down to lawns bordered by a fine selection of shrubs including Rhododendron, Hydrangea, Ornamental grasses, enclosed with Laurel and privet hedging.

The elevated spacious rear gardens provide a pleasing view over the surrounding countryside, planted with extensive beds of shrubs and Herbaceous plants including Roses, Carnations, Forest Flame, Fuchsia, Rhododendron etc which combine to create a riot of colour through out the year and a most pleasing backdrop to the residence. A concrete and flagged patio is situated immediately to the rear of the residence, ideal for alfresco dining.

Grant Vortex condensing oil fires boiler in housing; bunded uPVC oil tank.

Tenure

Leasehold

Ground Rent

£9.50 Per Annum (approx)

Capital / Rateable Value

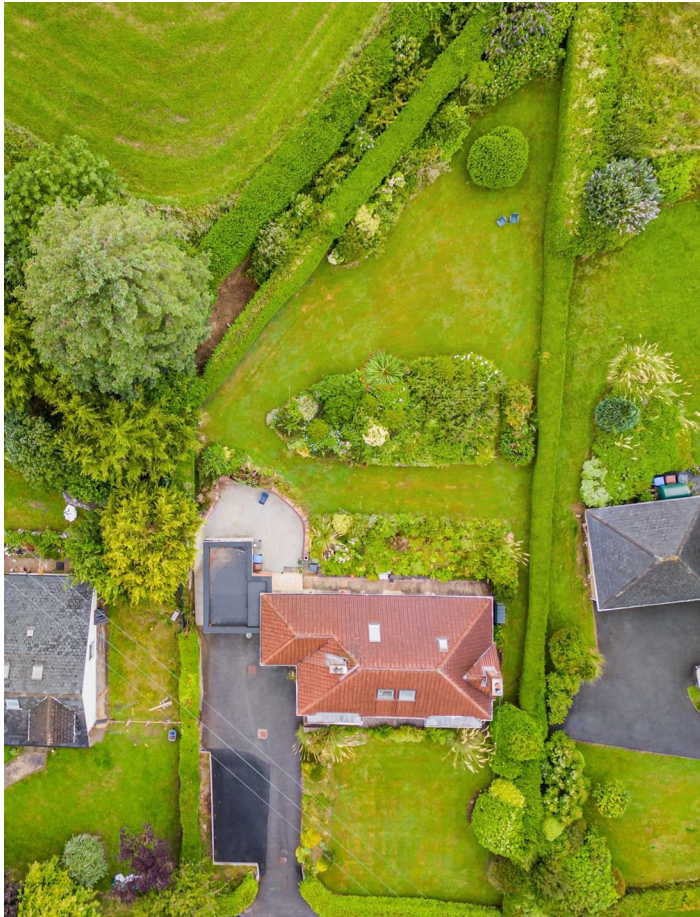
£150,000. Rates Payable = £1,523.40 Per Annum (Approx)











Energy Efficiency Rating		
	Current	Potential
Very energy efficient - lower running costs		
(92 plus) A		
(81-91) B		
(69-80) C		
(55-68) D		
(39-54) E		
(21-38) F		
(1-20) G		
Not energy efficient - higher running costs		

Comber ■
27 Castle Street, Comber, BT23 5DY
T 028 91 8789596

Saintfield
1B Main Street, Saintfield, BT24 7AA
T 028 97 568300

Tim Martin & Company for themselves and for the vendors of this property have endeavoured to prepare these sales details as accurate and reliable as possible for the guidance of intending purchasers or lessees. These particulars are given for general guidance only and do not constitute any part of an offer or contract. The seller and us as agents, do not make any representation or give any warranty in relation to the property. We would recommend that all information contained in this brochure about the property be verified by yourself or professional advisors. Services, fittings and equipment referred to in the sales details have not been tested (unless otherwise stated) and no warranty will be given as to their condition. All measurements contained within this brochure are approximate. Please contact us prior to viewing the property. If there is any point of particular importance to you we would be pleased to provide additional information or make further enquiries. We will also confirm that the property remains available. This is particularly important if you are contemplating travelling some distance to view the property.