

Tim Martin
— .co.uk



**13 Brae Park
Ballygowan
BT23 5TR**

**Offers Around
£140,000**

www.timmartin.co.uk
Telephone 028 91 878956

SUMMARY

This well presented end terrace home is ideally located in a quiet cul de sac, yet within walking distance of Ballygowan Village centre.

The accommodation is generous, and leaves nothing for the lucky buyer to do only unpack! The ground floor hosts a lounge with wood burning stove, a spacious kitchen / dining area and downstairs wc. The first floor enjoys a spacious landing with lots of built in storage, three bright, well-proportioned bedrooms and bathroom.

Outside, the enclosed side and rear gardens lead from the kitchen and feature easily maintained patio areas and lawns creating the perfect haven away from everyday life and the ideal location for summer bar-be-ques. The front garden is laid out in lawn.

This home is within walking distance of Ballygowan Village, hosting a pharmacy, butcher and convenience stores. Alexander Dickson Primary School is a short walk away. An excellent public transport service and road network allows for a convenient commute to Newtownards, Dundonald, and Belfast City Centre; as well as schools in the surrounding towns and Belfast.

FEATURES

- Well Presented End Terrace Home
- Lounge with Wood Burning Stove
- Spacious Kitchen and Dining Area
- Generous Storage Throughout the Property
- Three Well Proportioned Bedrooms
- Family Bathroom with White Suite
- Gas Fired Central Heating and Double Glazing
- Rear and Side Gardens with Garden Laid out in Lawn and Patio Area
- Alexander Dickson Primary School is a Short Walk Away
- Ideally Located Within Walking Distance of Ballygowan Village and Public Transport

Entrance Hall

Oak tongue and groove floor.

Lounge

13'3 x 10'6 (4.04m x 3.20m)

Enclosed cast iron wood burning stove on slate hearth; oak tongue and groove floor; Openreach connection point; twin illuminated recessed display niches.

Kitchen / Dining

17'7 x 11'8 (5.36m x 3.56m)

(maximum measurements)

Excellent range of painted finish high and low level cupboards and drawers incorporating single drainer stainless steel sink unit with mixer tap; formica worktop; Lamona electric oven; Lamona 4 ring ceramic hob with stainless steel extractor unit and light over; space and plumbing for washing machine; part tiled walls; ceramic tiled floor; walk-in storage cupboard with shelving.

Rear Hall

Door to rear garden.

WC

4'7 x 2'5 (1.40m x 0.74m)

White suite comprising close coupled wc; semi pedestal wash hand basin with chrome towel rail; ceramic tiled floor; part tiled walls.

Stairs To First Floor / Landing

Two double built-in wardrobes with sliding doors (two mirror fronted) with clothes rails and shelves; access to roofspace via slingsby type ladder (partially floored with Baxi gas fired boiler).

Bedroom 1

11'6 x 10'3 (3.51m x 3.12m)

Built-in wardrobe with fitted clothes rails and shelves.

Bedroom 2

8'8 x 7'2 (2.64m x 2.18m)

(maximum measurements)

Bathroom

7'9 x 6'6 (2.36m x 1.98m)

White suite comprising panelled bath with centrally located pillar mixer tap and telephone shower attachment; Aqualisa electric shower; glass shower screen; vanity unit with wash hand basin with chrome mono mixer tap and drawer under; close coupled wc; ceramic tiled walls and floor; display shelf; chrome heated towel radiator; LED spotlights.

Bedroom 3

11'7 x 9'8 (3.53m x 2.95m)

Double built-in wardrobe with clothes rail and shelf.

Outside

Front garden laid out in lawn and planted with a range of ornamental and flowering shrubs and trees; flagged path to front door.

Rear And Side Gardens

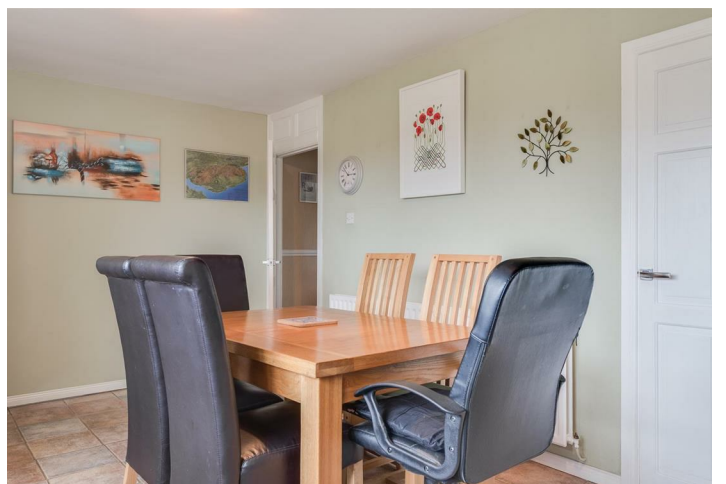
Enclosed flagged and concrete patio area with flowerbeds; garden laid out in lawn; brick pavia patio area; outside light and power points.

Capital Rateable Value

£85,000. Rates Payable = £776.65 per annum (approx)

Tenure

Freehold







13 Brae Park
Ballygowan, BT23 5TW

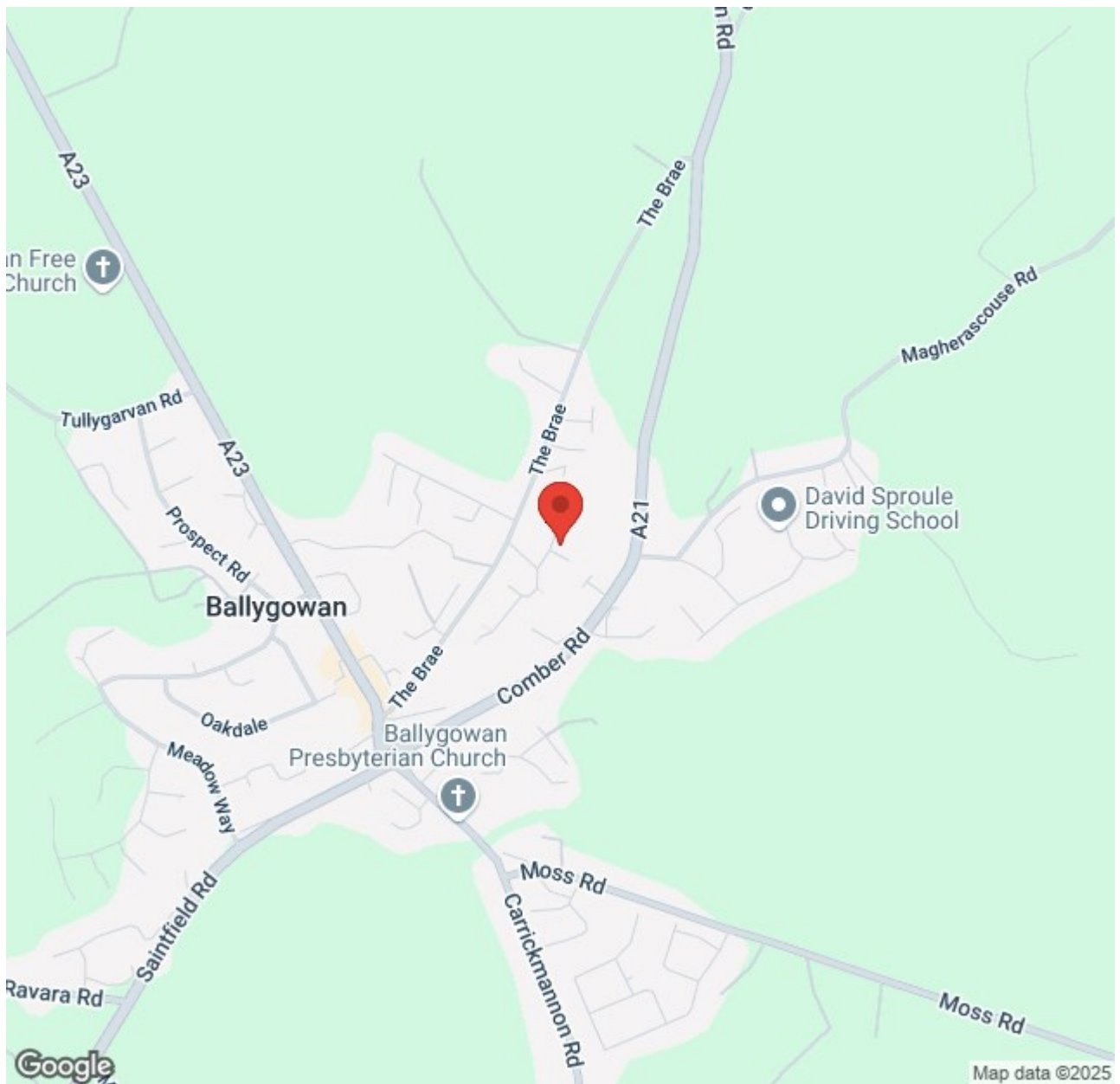
(Floorplan for illustrative purposes only)
created at www.igphotography.uk



13 Brae Park
Ballygowan, BT23 5TW

(Floorplan for illustrative purposes only)
created at www.igphotography.uk





Energy Efficiency Rating		
	Current	Potential
Very energy efficient - lower running costs		
(92 plus) A		
(81-91) B		
(69-80) C		
(55-68) D		
(39-54) E		
(21-38) F		
(1-20) G		
Not energy efficient - higher running costs		

Comber ■
27 Castle Street, Comber, BT23 5DY
T 028 91 8789596

Saintfield
1B Main Street, Saintfield, BT24 7AA
T 028 97 568300

Tim Martin & Company for themselves and for the vendors of this property have endeavoured to prepare these sales details as accurate and reliable as possible for the guidance of intending purchasers or lessees. These particulars are given for general guidance only and do not constitute any part of an offer or contract. The seller and us as agents, do not make any representation or give any warranty in relation to the property. We would recommend that all information contained in this brochure about the property be verified by yourself or professional advisors. Services, fittings and equipment referred to in the sales details have not been tested (unless otherwise stated) and no warranty will be given as to their condition. All measurements contained within this brochure are approximate. Please contact us prior to viewing the property. If there is any point of particular importance to you we would be pleased to provide additional information or make further enquiries. We will also confirm that the property remains available. This is particularly important if you are contemplating travelling some distance to view the property.