

**Tim Martin**  
— .co.uk



**30 Lisnabreeny Road East  
Belfast  
BT6 9SS**

**Offers Around  
£425,000**

[www.timmartin.co.uk](http://www.timmartin.co.uk)  
Telephone 028 91 878956

## SUMMARY

A beautifully presented detached bungalow, occupying a spacious site within this highly desirable rural location, with far reaching views over the surrounding countryside towards Belfast.

The accommodation is bright and spacious throughout and will suit a wide range of purchasers, including the growing or established families or those wishing to downsize. A welcoming reception hall makes way to the spacious 'L' shaped lounge with dining area which is open through to a separate living area and modern fitted kitchen, both enjoying stunning views over the countryside. Three excellent sized bedrooms including the principal bedroom with en suite and a family bathroom fitted with a modern white suite, complete this beautiful home.

Outside, a detached garage with storage over, provides the perfect opportunity to create a separate granny flat or home office or those with a creative mind, could design a link into the main dwelling and create their own dream home (subject to planning).

The gardens are laid out in lawn with a spacious paved patio area to the side, perfectly designed to take full advantage of the beautiful views and enjoy a morning coffee and the evening sunset.

Boasting an enviable location that enjoys the best of rural living with city convenience in mind, Belfast city centre is a short commute away while Ballyhackamore and Forestside Shopping Centre are within a 10 minute drive. An excellent choice of easily accessible primary and secondary schools are located nearby.

## FEATURES

- Beautifully Presented Detached Bungalow Occupying A Superb Site With Stunning Views
- Spacious Lounge Open Through To The Dining Room
- Modern Fitted Kitchen Which Opens Out To The Living Area
- Three Excellent Sized Bedrooms Including The Principle Bedroom With Ensuite Shower Room
- Bathroom Fitted With A Modern White Suite
- Gas Fired Central Heating And Double Glazing
- Detached Garage With Storage Over – Potential To Convert To Granny Flat Or Home Office – Subject To Planning
- Well Maintained Gardens With Spacious Patio Area Enjoying Views Over Surrounding Countryside
- Within Close Proximity To Castlereagh, Ballyhackamore And Belfast City Centre And Convenient To Many Primary And Secondary Schools And Forestside Shopping Centre
- Perfect For The Growing And Established Families Or Those Wishing To Downsize

## **Entrance Hall**

Glazed PVC entrance door with matching side lights; engineered wood flooring; built-in storage cupboards; cloak cupboard; glazed double doors with Arabescato Orobico marble steps and sills, through to:-

## **Lounge / Dining Area**

**23'9 x 18'2 (7.24m x 5.54m )**

L shaped - maximum measurements

Wide board engineered wood flooring; corniced ceiling; recessed spotlights; glazed PVC double doors to outside; open through to:-

## **Living Area**

**24'2 x 7'11 (7.37m x 2.41m )**

Part wide board engineered wood flooring; part tiled floor; recessed spotlights; feature lantern window; glazed uPVC double doors to patio; beautiful views over the surrounding countryside.

## **Kitchen**

**15'6 x 9'10 (4.72m x 3.00m )**

Excellent range of modern wood laminate high and low level cupboards and drawers incorporating 1½ tub sink unit with mono mixer taps; detachable tap head; integrated Hotpoint double electric oven; CDA 4 ring gas hob; extractor hood over; Hotpoint fridge/freezer; integrated dishwasher; Hotpoint washing machine; laminate worktops; tiled floor; raised and adjustable live edge wooden breakfast bar; recessed spotlights; Worcester gas fired boiler; motorised/rain sensitive sky light.

## **Bathroom**

**10'7 x 7'10 (3.23m x 2.39m )**

Modern white suite comprising P shaped bath with pillar mixer taps; Mira Vie electric shower unit and wall mounted telephone shower attachment; fitted glass shower screen; pedestal wash hand basin with mono mixer taps; close coupled WC; tiled floor and walls; towel radiator; recessed spotlights; corniced ceiling; extractor fan.

## **Bedroom 1**

**10'8 x 9'5 (3.25m x 2.87m )**

Maximum Measurements

Wood strip oak floor.

## **Bedroom 2**

**13'2 10'7 (4.01m 3.23m )**

Wide board engineered wood flooring; built-in wardrobe with mirrored sliding doors.

## **Principal Bedroom**

**12'8 12'3 (3.86m 3.73m )**

Engineered wood flooring; built-in wardrobe with mirrored sliding doors.

## **En-suite Shower Room**

**9'0 x 4'1 (2.74m x 1.24m )**

Modern white suite comprising separate tiled shower cubicle with thermostatically controlled shower unit and wall mounted telephone shower attachment; wall mounted wash hand basin with mono mixer taps and vanity unit under; close coupled WC; towel radiator; tiled floor and walls.

## **Outside**

Spacious driveway leading to the front, side and rear of the property.

**Detached Garage****28'7 x 13'5 (8.71m x 4.09m )**

Up and over door; PVC side door; light and power points; access to additional storage over.

**Gardens**

Enclosed rear gardens laid out in lawn; decorative gravelled and barked areas; paved patio area; stunning views over the surrounding countryside; outside lights and water tap; water and electric lines installed to the bottom of the garden, future proofing to further avail of the panoramic country views.

**Tenure**

Freehold

**Capital / Rateable Value**

£270,000. Rates Payable = £2349.00 Per annum (approx)

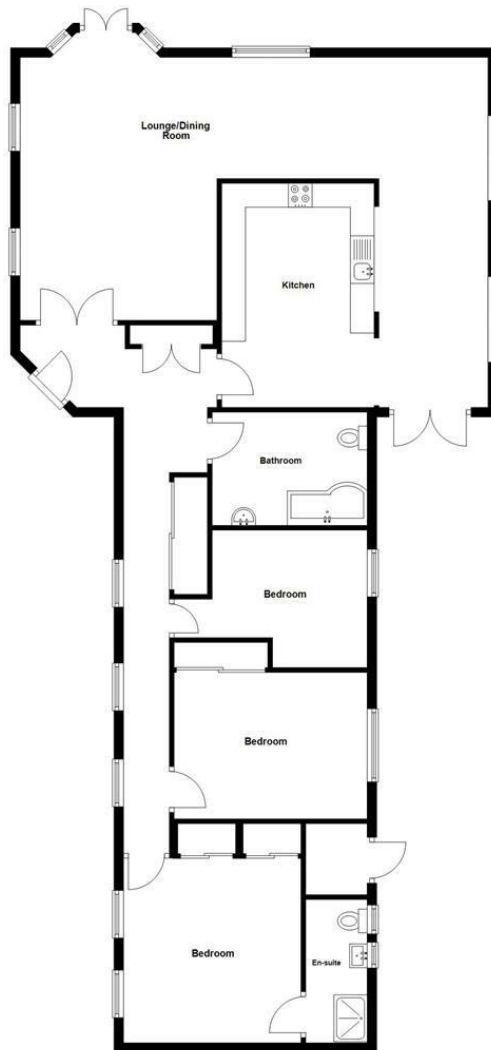






### Ground Floor

Approx. 140.8 sq. metres (1515.4 sq. feet)



Total area: approx. 172.0 sq. metres (1851.3 sq. feet)



Energy Efficiency Rating		
	Current	Potential
Very energy efficient - lower running costs		
(92 plus) <b>A</b>		
(81-91) <b>B</b>		
(69-80) <b>C</b>		
(55-68) <b>D</b>		
(39-54) <b>E</b>	39	39
(21-38) <b>F</b>		
(1-20) <b>G</b>		
Not energy efficient - higher running costs		

**Comber**  
27 Castle Street, Comber, BT23 5DY  
T 028 91 8789596

**Saintfield**  
1B Main Street, Saintfield, BT24 7AA  
T 028 97 568300

Tim Martin & Company for themselves and for the vendors of this property have endeavoured to prepare these sales details as accurate and reliable as possible for the guidance of intending purchasers or lessees. These particulars are given for general guidance only and do not constitute any part of an offer or contract. The seller and us as agents, do not make any representation or give any warranty in relation to the property. We would recommend that all information contained in this brochure about the property be verified by yourself or professional advisors. Services, fittings and equipment referred to in the sales details have not been tested (unless otherwise stated) and no warranty will be given as to their condition. All measurements contained within this brochure are approximate. Please contact us prior to viewing the property. If there is any point of particular importance to you we would be pleased to provide additional information or make further enquiries. We will also confirm that the property remains available. This is particularly important if you are contemplating travelling some distance to view the property.