



homepage



## 3 Corrstown Lane Portrush, BT56 8FX



**\*\* COMING SOON \*\***

Corrstown Village is a boutique development of just six luxury homes on Northern Ireland's North Coast. A rare and exclusive enclave of individually designed residences.

Each home has been crafted with meticulous care, blending natural materials, timeless design and bespoke architectural detail throughout.

Offering a mix of two, three, and four-bedroom homes, Corrstown is steeped in character and thoughtfully created for those who value expansive interiors and generous outdoor space.

## No Price

### Viewing

Please contact our Homepage Estate Agents Office on 028 7187 6261

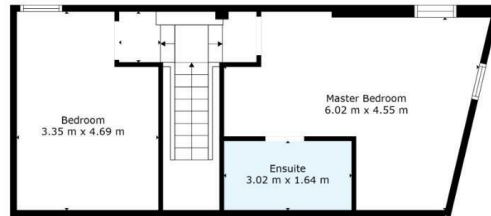
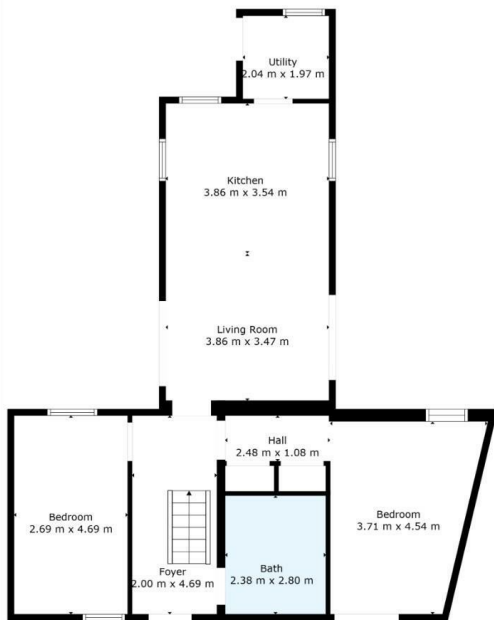
if you wish to arrange a viewing appointment for this property or require further information.

- **\*\* COMING SOON - REGISTER INTEREST \*\***
- —
- **FOUR SPACIOUS BEDROOMS**
- **OPEN-PLAN LIVING AREA**
- **STUNNING INTERNAL FINISHES**
- **TWO BATHROOMS**
- **PRIVATE GARDEN SPACE**
- **OUTDOOR SEATING AREA & HOT TUB**
- **MINUTES FROM PORTRUSH**
- **RARE COASTAL OPPORTUNITY**



## Three - The Stables

3 CORRSTOWN LANE



homepage  
online.co.uk

This architectural perspective is for illustrative purposes only. The floor plan shown may vary from the actual finish on site. Plans are not to scale and measurements are approximate.

### Energy Efficiency Rating

	Current	Potential
Very energy efficient - lower running costs		
(92 plus) <b>A</b>		
(81-91) <b>B</b>		
(69-80) <b>C</b>		
(55-68) <b>D</b>		
(39-54) <b>E</b>		
(21-38) <b>F</b>		
(1-20) <b>G</b>		
Not energy efficient - higher running costs		

Northern Ireland

EU Directive  
2002/91/EC

### Environmental Impact (CO<sub>2</sub>) Rating

	Current	Potential
Very environmentally friendly - lower CO <sub>2</sub> emissions		
(92 plus) <b>A</b>		
(81-91) <b>B</b>		
(69-80) <b>C</b>		
(55-68) <b>D</b>		
(39-54) <b>E</b>		
(21-38) <b>F</b>		
(1-20) <b>G</b>		
Not environmentally friendly - higher CO <sub>2</sub> emissions		

Northern Ireland

EU Directive  
2002/91/EC



These particulars, whilst believed to be accurate are set out as a general outline only for guidance and do not constitute any part of an offer or contract. Intending purchasers should not rely on them as statements of representation of fact, but must satisfy themselves by inspection or otherwise as to their accuracy. No person in this firm's employment has the authority to make or give any representation or warranty in respect of the property.

Homepage Estate Agents

Tel: 028 7187 6261 | Email: [info@homepageonline.co.uk](mailto:info@homepageonline.co.uk)

[www.clickhomepage.online](http://www.clickhomepage.online)

homepage