

## House Type A Drummond Manor Limavady, BT49 0UQ



Drummond Manor is an Exciting New Development of 14 Modern Luxury Homes.

A choice of beautiful 3 bedroom semi-detached homes with enclosed rear gardens, tarmac driveways, paved patio areas, and luxury turnkey finishes all with spacious living accommodation.

Buyers will enjoy a range of stunning interior turnkey finishes to include bathrooms, flooring, modern kitchen designs and media walls including fires and TV.

Ideally situated just off the Edenmore Rd close to the Limavady bypass, offering easy commuter access to Derry / Londonderry and Coleraine.

These modern new homes are suitable for first time buyers, young professionals and families alike.



**\*\* REGISTER INTEREST NOW \*\***

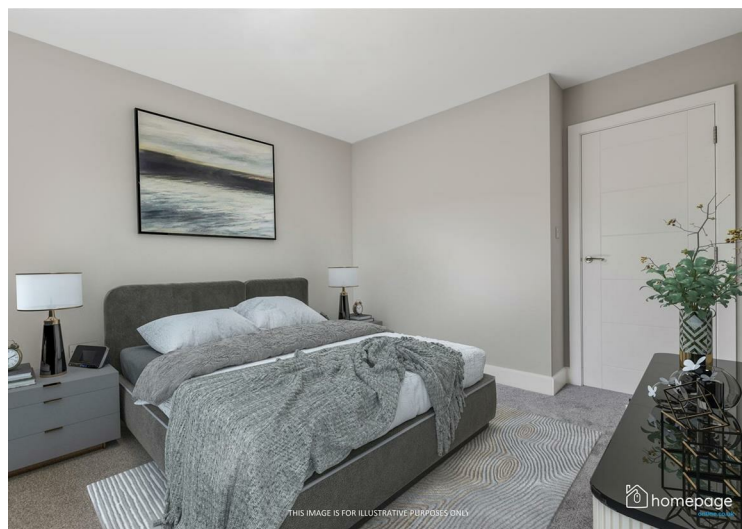
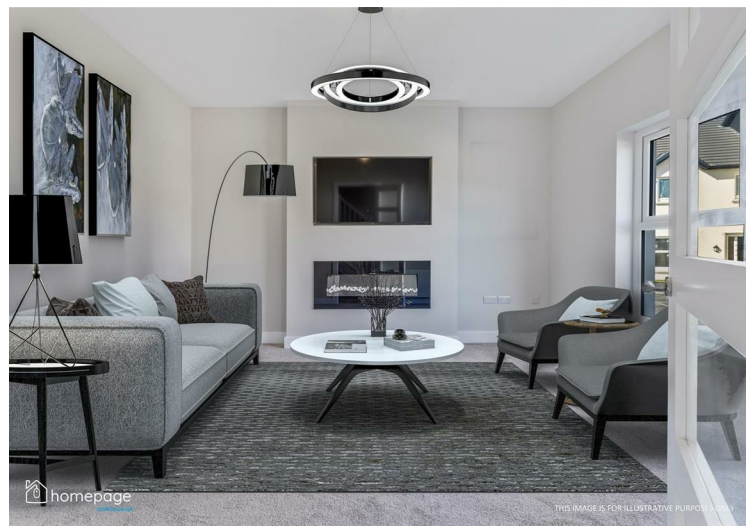
- 3 BEDROOM FAMILY HOMES
- SEMI DETACHED
- LARGE RECEPTION ROOM
- OPEN PLAN KITCHEN / DINING
- UTILITY ROOM
- 3 BATHROOMS
- STUNNING INTERNAL FEATURES
- MEDIA WALL INC FIRE & TV
- PRIVATE ENCLOSED REAR GARDENS

## Prices from £194,950





Energy Efficiency Rating		
	Current	Potential
Very energy efficient - lower running costs		
(92 plus) <b>A</b>		
(81-91) <b>B</b>		
(69-80) <b>C</b>		
(55-68) <b>D</b>		
(39-54) <b>E</b>		
(21-38) <b>F</b>		
(1-20) <b>G</b>		
Not energy efficient - higher running costs		
<b>Northern Ireland</b>		EU Directive 2002/91/EC 
Environmental Impact (CO <sub>2</sub> ) Rating		
	Current	Potential
Very environmentally friendly - lower CO <sub>2</sub> emissions		
(92 plus) <b>A</b>		
(81-91) <b>B</b>		
(69-80) <b>C</b>		
(55-68) <b>D</b>		
(39-54) <b>E</b>		
(21-38) <b>F</b>		
(1-20) <b>G</b>		
Not environmentally friendly - higher CO <sub>2</sub> emissions		
<b>Northern Ireland</b>		EU Directive 2002/91/EC 



These particulars, whilst believed to be accurate are set out as a general outline only for guidance and do not constitute any part of an offer or contract. Intending purchasers should not rely on them as statements of representation of fact, but must satisfy themselves by inspection or otherwise as to their accuracy. No person in this firm's employment has the authority to make or give any representation or warranty in respect of the property.

Homepage Estate Agents  
 Tel: 028 7187 6261 | Email: [info@homepageonline.co.uk](mailto:info@homepageonline.co.uk)  
[www.clickhomepage.online](http://www.clickhomepage.online)

