



## Type K Causeway Street Portrush, BT56 8JG

4C - £ 429,950

  
CURRAN GATE  
PORTRUSH



### Luxury Sea Front Apartments

Curran Gate, East Strand Portrush is the North Coast's most prestigious new development. With 30 luxury oceanfront apartments, enjoying views over the wave-swept East Strand and Royal Portrush Golf Course. The Lazy S design of these apartments finished to the highest quality evokes relaxation and calmness.

A private gated community, with off-street parking and dedicated concierge service. A Curran Gate apartment is an investment in yourself.

These level four apartments are finished to the highest standard, with front and rear balconies overlooking Portrush East Strand and the Royal Portrush Golf Course.

These prestigious open-plan apartments embody smart home living with the joys of the North Coast at your doorstep.

Site 4C – 1281sqft AVAILABLE

Site 4E – 1274sqft RESERVED – Showhome

**Asking price £429,950**

### Viewing

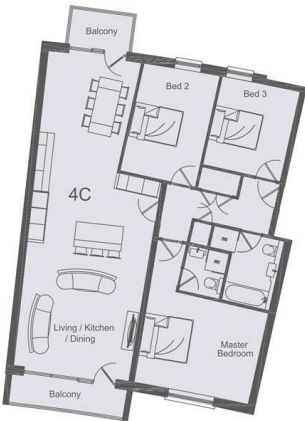
Please contact our Homepage Office on 08000465102 if you wish to arrange a viewing appointment for this property or require further information.





# Apartment Type-K

Apartment 4C 1281 sqft			
Level 4			
	m	ft	
Living / Kitchen / Dining	4.50 x 12.40	14'9" x 40'8"	
Master Bedroom	4.50 x 4.30	14'9" x 14'11"	
Bedroom 2	3.00 x 4.30	9'10" x 14'11"	
Bedroom 3	3.10 x 3.70	10'2" x 12'11"	



Energy Efficiency Rating		
	Current	Potential
Very energy efficient - lower running costs		
(92 plus) <b>A</b>		
(81-91) <b>B</b>		
(69-80) <b>C</b>		
(55-68) <b>D</b>		
(39-54) <b>E</b>		
(21-38) <b>F</b>		
(1-20) <b>G</b>		
Not energy efficient - higher running costs		
Northern Ireland		EU Directive 2002/91/EC
Environmental Impact (CO <sub>2</sub> ) Rating		
	Current	Potential
Very environmentally friendly - lower CO <sub>2</sub> emissions		
(92 plus) <b>A</b>		
(81-91) <b>B</b>		
(69-80) <b>C</b>		
(55-68) <b>D</b>		
(39-54) <b>E</b>		
(21-38) <b>F</b>		
(1-20) <b>G</b>		
Not environmentally friendly - higher CO <sub>2</sub> emissions		
Northern Ireland		EU Directive 2002/91/EC



These particulars, whilst believed to be accurate are set out as a general outline only for guidance and do not constitute any part of an offer or contract. Intending purchasers should not rely on them as statements of representation of fact, but must satisfy themselves by inspection or otherwise as to their accuracy. No person in this firms employment has the authority to make or give any representation or warranty in respect of the property.