

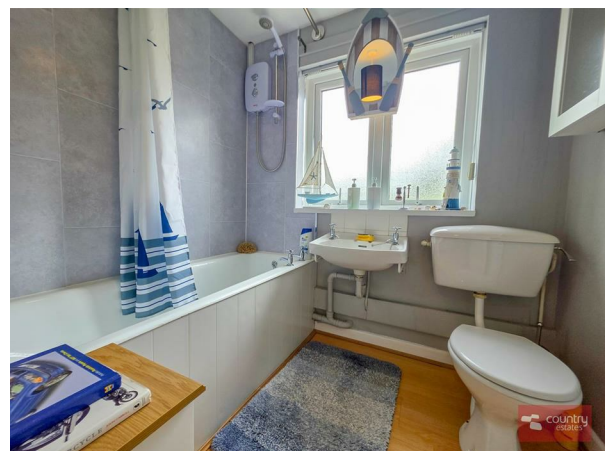
15b Glenville Park, Newtownabbey, BT37 0TE



- First Floor Apartment
- One Bedroom
- Lounge
- Modern Fitted Kitchen with Dining Aspect
- White Bathroom Suite
- PVC Double Glazing
- Gas Fired Central Heating
- Popular Convenient Location
- Ideal for First Time Buyers and Investors Alike

PRICE Offers Over £64,950

Conveniently located just off the Glenville Road, Whiteabbey, this first floor one bedroom apartment is ideally suited to first time buyers and investors alike. Well presented throughout, the property briefly comprises lounge, modern fitted kitchen, one bedroom and a white bathroom suite. Additional benefits to include PVC double glazing and gas fired central heating. An early viewing is highly recommended.



>Sales >New Homes >Commercial >Rentals >Mortgages

Antrim
12 Church Street
BT41 4BA
Tel: (028) 9446 6777

Ballyclare
51 Main Street
BT39 9AA
Tel: (028) 9334 0726

Glengormley
9A Ballyclare Road
BT36 5EU
Tel: (028) 9083 0803

ACCOMMODATION

ENTRANCE

PVC double glazed front door into well presented entrance hall. Quality laminate floor. Storage cupboards.

LOUNGE

12'9" x 9'6" (3.9 x 2.9)

Quality laminate flooring. Picture style window.

MODERN FITTED KITCHEN

9'10" x 9'6" (3.0 x 2.9)

Equipped with a range of high and low level units and contrasting work surfaces. Single drainer stainless steel sink unit. Space for free standing oven. Space for free standing fridge freezer. Plumbed for washing machine. Part tiled walls. Quality laminate flooring.

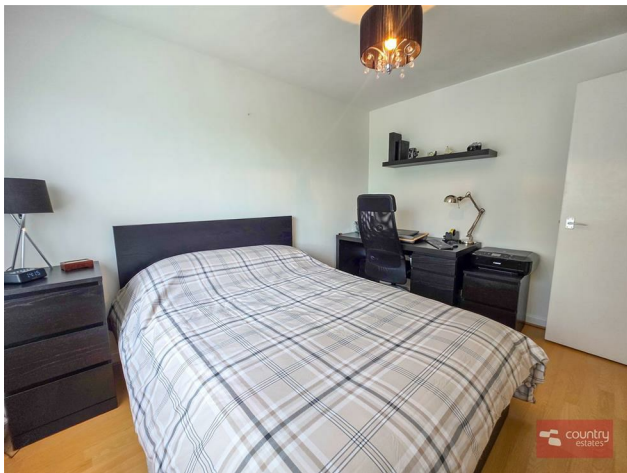
BEDROOM

11'9" x 8'10" (3.6 x 2.7)

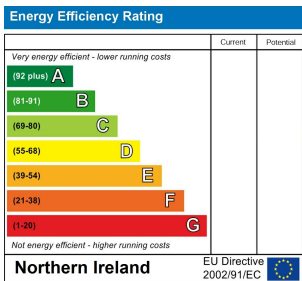
Built in wardrobe space. Quality laminate flooring.

WHITE BATHROOM SUITE

Comprising panel bath with electric shower unit over bath, Wall mounted wash hand basin and a low flush WC. Part PVC panelled walls. Laminate flooring.



IMPORTANT NOTE TO ALL PURCHASERS: We have not tested any of the systems or appliances at this property.



Country Estates (N.I) Ltd. for themselves and the Vendors of this property whose agents are, give notice that:

These particulars do not constitute any part of an offer or contract

All statements contained in these particulars as to this property are made without responsibility on the part of Country Estates (N.I) Ltd. or the vendor

None of the statements contained in these particulars as to this property are to be relied on as statements or representations of fact

Any intending purchaser must satisfy himself or otherwise as to the correctness of the statement contained in these particulars

The vendor does not make or give, and neither Country Estates (N.I) Ltd. nor any person in their employment, has any authority to make or give representation or warranty whatever in relation to this property.