

12 Brackens Dale, Newtownabbey, BT36 6UJ



PRICE Offers Over £309,950

Impressive extended detached family villa, ideally positioned to enjoy elevated rural views toward Belfast Lough, Knockagh and Slemish. Located within the highly popular Brackens Development in Carnmoney, Newtownabbey. Immaculately presented throughout, this family home enjoys a well planned, spacious living layout to include a lounge, family room, dining room, contemporary shaker style fitted kitchen with casual dining aspect, separate utility, furnished cloak room, four well proportioned bedrooms, master ensuite shower room, luxury four piece family bathroom suite and a "Tower" to enjoy the rural views. Externally the property further benefits from a private driveway, extensive garden to side, a paved patio/terrace area to rear and a detached garage with power and light. Ideally suited to the young family searching for a turn key style finish. An early viewing is highly recommended.

>Sales >New Homes >Commercial >Rentals >Mortgages

Antrim
12 Church Street
BT41 4BA
Tel: (028) 9446 6777

Ballyclare
51 Main Street
BT39 9AA
Tel: (028) 9334 0726

Glengormley
9A Ballyclare Road
BT36 5EU
Tel: (028) 9083 0803

- **Impressive Extended Detached Family Villa**
- **4 Well Proportioned Bedrooms**
- **3 Receptions**
- **Contemporary Fitted Shaker Style Kitchen with Dining Aspect**
- **Luxury Four Piece Family Bathroom**
- **Separate Utility Room**
- **Extensive Private Enclosed Garden to Rear**
- **Detached Garage with Power and Light**
- **Amazing Views Extending To Belfast Lough, Knockagh and Slemish**
- **Highly Popular Residential Location**



ACCOMMODATION

GROUND FLOOR

Composite front door with double glazed side screens into front porch with tiled flooring. Hard wood front door into

ENTRANCE HALL

Spacious, well presented entrance hall with tiled flooring. Storage cupboard. Under stairs storage.

SPACIOUS LOUNGE

21'3" x 13'1" (6.5 x 4.0)

Attractive feature fire place with gas fire. Quality hard wood flooring. Bay window with far reaching views over country side. Hard wood french doors into:

DINING ROOM

14'5" x 13'5" (4.4 x 4.1)

Large picture style windows with far reaching views across Belfast Lough and surrounding country side. Quality hard wood flooring. PVC double glazed door to patio. PVC double glazed door to side garden.



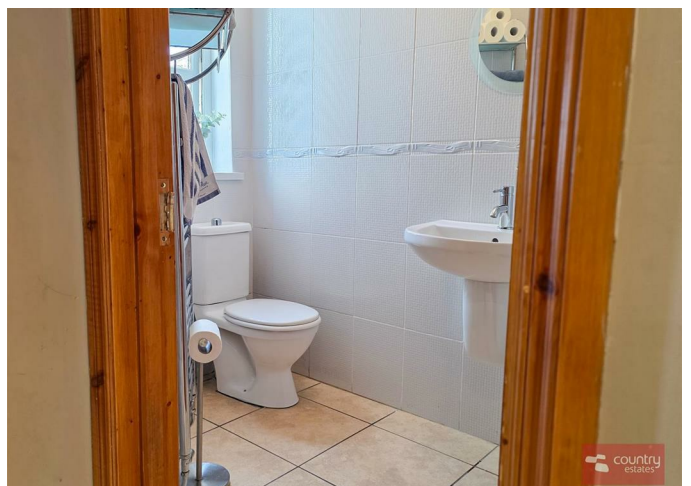
CONTEMPORARY KITCHEN WITH CASUAL DINING AREA

19'4" x 13'1" (5.9 x 4.0)

Equipped with a comprehensive range of high and low level shaker style fitted units and contrasting work surfaces. One and a half bowl single drainer stainless steel sink unit with swan neck mixer tap. Boasting a range of integrated appliances to include; eye level oven, separate four ring induction hob with overhead extractor fan housed in stainless steel canopy with a glass hood, dishwasher, wine cooler, under counter fridge and under counter freezer. Part tiled walls in metro brick style. Tiled floor.

MATCHING UTILITY

Equipped with high and low level shaker style fitted units and contrasting work surfaces. Single drainer stainless steel sink unit. Plumbed for washing machine. Space for free standing tumble dryer. PVC double glazed door to rear patio.



FAMILY ROOM

14'1" x 12'5" (4.3 x 3.8)

Quality laminate flooring. PVC double glazed French Doors to rear patio/Terrace.

FURNISHED CLOAK ROOM

Comprising semi-pedestal wash hand basin with monobloc tap and a button flush WC. Tiled floor. Tiled walls.



FIRST FLOOR

Spacious landing. Access to roof space. Shelved storage cupboard. Shelved hot press.

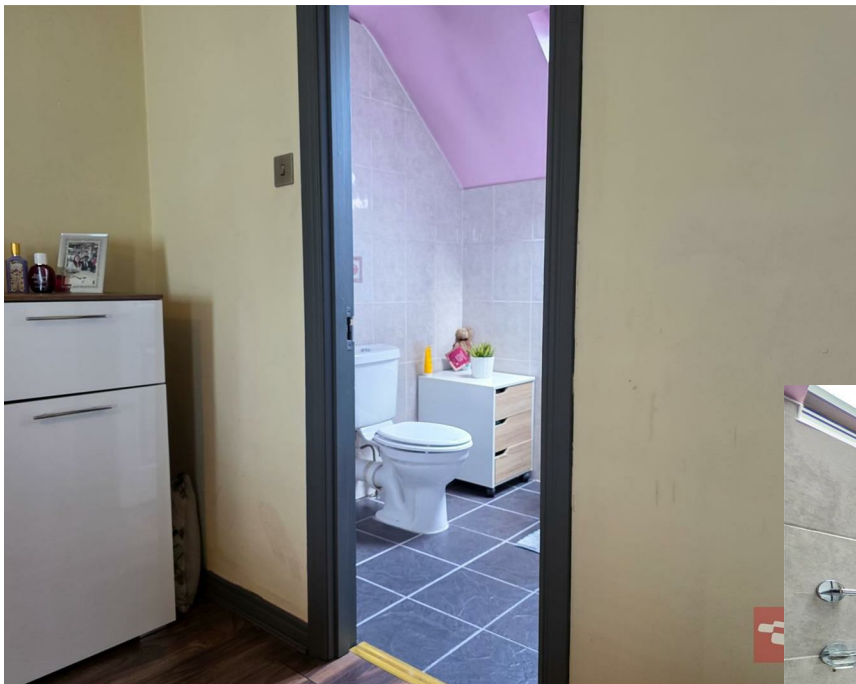
BEDROOM 1

15'1" x 13'1" (4.6 x 4.0)

Quality laminate flooring.

DELUXE ENSUITE SHOWER ROOM

Comprising quadrant shower cubicle with thermostatically controlled shower, pedestal wash hand basin, button flush WC. Velux window. Tiled floor. Tiled walls.



BEDROOM 2

13'1" x 10'5" (4.0 x 3.2)

BEDROOM 3

12'9" x 10'5" (3.9 x 3.2)

Velux window.

BEDROOM 4

12'5" x 9'6" (3.8 x 2.9)

Dual window aspect. Stairs leading to:



THE TOWER

12'5" x 9'6" (3.8 x 2.9)

Dual window aspect. Expansive views across Belfast Lough and Surrounding Countryside.

LUXURY FOUR PIECE FAMILY BATHROOM SUITE

Comprising P-Shaped spa bath with hand shower attachment, step in shower with electric shower unit and pedestal wash hand basin with swan neck mixer tap and a button flush WC. Chrome towel radiator. Tiled floor. Tiled walls.



OUTSIDE

Private driveway to side, leading to detached garage, for off-street parking with ample space for a variety of vehicles.

Paved patio/terrace area to rear with far reaching views extending to over Belfast Lough.

Private enclosed, extensive, garden to rear, screened by a variety of hedgerow and trees. Laid in lawn with decking area and paved walkways.

BASEMENT

14'1" x 13'5" (4.3 x 4.1)

Equipped with kitchenette. Single drainer stainless steel sink unit. Power and lights. Perfect for evening entertainment.

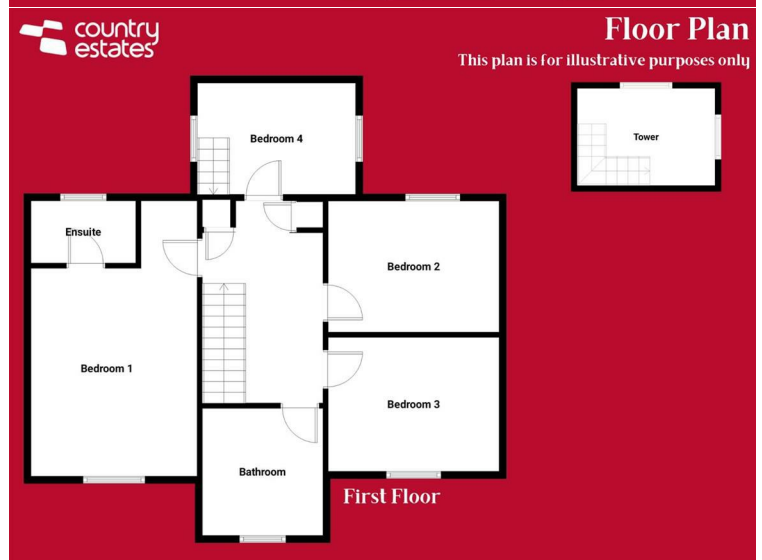
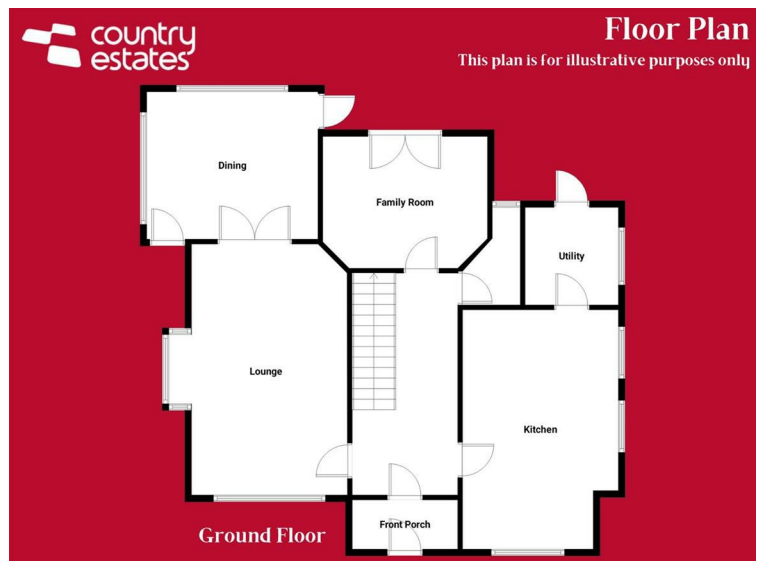
WC

Comprising pedestal wash hand basin and a button flush WC.

GARAGE

19'3" x 9'8" (5.87 x 2.97)

Equipped with power and light. Roller shutter door.



Energy Efficiency Rating		
	Current	Potential
Very energy efficient - lower running costs		
(92 plus) A		
(81-91) B		
(69-80) C		
(55-68) D		
(39-54) E		
(21-38) F		
(1-20) G		
Not energy efficient - higher running costs		
Northern Ireland	EU Directive 2002/91/EC	

IMPORTANT NOTE TO ALL PURCHASERS: We have not tested any of the systems or appliances at this property.



PRS Property
Redress
Scheme

Country Estates (N.I) Ltd. for themselves and the Vendors of this property whose agents are, give notice that:

These particulars do not constitute any part of an offer or contract

All statements contained in these particulars as to this property are made without responsibility on the part of Country Estates (N.I) Ltd. or the vendor

None of the statements contained in these particulars as to this property are to be relied on as statements or representations of fact

Any intending purchaser must satisfy himself or otherwise as to the correctness of the statement contained in these particulars

The vendor does not make or give, and neither Country Estates (N.I) Ltd. nor any person in their employment, has any authority to make or give representation or warranty whatever in relation to this property.