

22 Greenvale Avenue, Antrim, BT41 1ST



PRICE Offers Over £174,950

We are delighted to offer for sale this beautifully presented three bedroom semi-detached house with occupying an excellent position within this sought after residential development on the outskirts of Antrim town yet within easy access of all local amenities and transport facilities to include Antrim Forum, the stunning Antrim Castle Gardens, the Antrim Area Hospital, Belfast International Airport and the M2 motorway for an easy commute to Belfast and the North West.

Finished to a high standard both inside and out, the property benefits from Dove grey coloured kitchen units with integrated 'Neff' oven and hob and space for a washing machine and fridge freezer.

Outside, the property is situated on a generous site with privacy to the front and is accessed via a tarmac driveway with parking for two plus cars and access to a beautifully landscaped rear garden with excellent sun orientation. In addition the solar panels owned by the property offer energy efficiency and the 7kwh electric car charger can be discussed as an additional purchase. This property is ideally suited to the first time buyer or those with a young family.

Early viewing strongly recommended.

>Sales >New Homes >Commercial >Rentals >Mortgages

Antrim
12 Church Street
BT41 4BA
Tel: (028) 9446 6777

Ballyclare
51 Main Street
BT39 9AA
Tel: (028) 9334 0726

Glengormley
9A Ballyclare Road
BT36 5EU
Tel: (028) 9083 0803



FEATURES

- Entrance hall with staircase to first floor / Fully tiled floor
- Living room with solid wood floor and feature fireplace with solid multi-fuel stove
- Dining room with fully tiled floor open to sun annex with PVC double glazed French doors to rear
- Luxury fitted kitchen in 'Dove light blue' high and low level units
- Integrated 'Neff' double oven, hob and stainless steel overhead pyramid style extractor
- Three well proportioned bedrooms / Master with ensuite shower room and W/C
- Modern white bathroom suite with ceramic tiled floors and walls.
- PVC double glazed windows and rear doors / Oil fired central heating / Solar Panels
- Tarmac drive with parking for three plus cars / Space for garage / Rear shed and electric car charger can be negotiated
- Beautifully landscaped low maintenance gardens to rear

ACCOMMODATION

Hardwood 4 panel entrance door to:-

ENTRANCE HALL

Fully tiled floor. Double radiator. Open to understairs storage area. Staircase to first floor with pine moulded handrail, painted spindles and turned balustrading. Telephone point.

LIVINGROOM

15'7" x 12'1" (4.75m x 3.68m)

Open hole in the wall fire with pine feature surround and slate effect inset and hearth. Multi-solid fuel cast iron stove. Solid wood floor. Double radiator.

DININGROOM

15'1" x 9'3" (4.62 x 2.84)

(into sun annex). Fully tiled floor. Double radiator. PVC double glazed French doors and side lights to rear with monopitch antiglare roof.

KITCHEN

11'8" x 9'3" (3.56 x 2.82)

Full range of 'Dove grey' high and low level units with short chrome handles and complimentary 'White sparkle grain' work surfaces. One and a quarter bowl composite sink unit with mixer taps. Integrated four ring 'Neff' halogen hob and pyramid style stainless steel overhead extractor canopy. Stainless steel 'Neff' low level double oven. Plumbed for washing machine. Space for fridge freezer. Fully tiled 'Subway style' walls to work surfaces. Fully tiled floor. Single radiator. PVC double glazed door to rear.

FIRST FLOOR LANDING

Access to partially floored loft via 'Slingsby' style ladder.
Light. Hotpress with insulated copper cylinder and immersion heater. Shelving above.

BEDROOM 1

13'6" x 9'8" (4.14 x 2.95)

Double radiator

ENSUTIE

White suite comprising low flush W/C, pedestal wash hand basin and fully tiled shower cubicle with pressurised mains shower and pivot and slide door. Shaver light point. Fully tiled floor. Extractor fan. Single radiator

BEDROOM 2

10'7" x 10'5" (3.23 x 3.20)

Single radiator

BEDROOM 3

8'11" x 6'2" (2.74 x 1.88)

Single radiator

BATHROOM

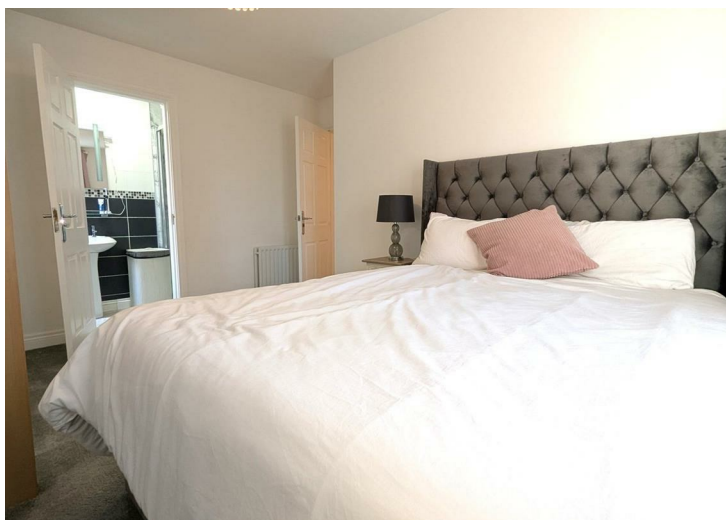
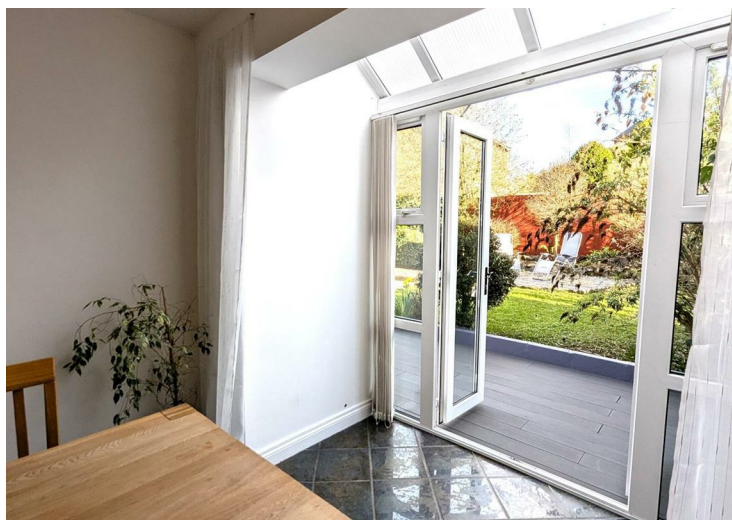
Modern white suite comprising a wood panelled bath with shower over and partially glazed screen, low flush W/C and pedestal wash hand basin. Ceramic tiled floor and walls with decorative border. Wall light point. Extractor fan. Single radiator.

OUTSIDE

Tarmac drive with parking for three plus cars. Space for garage. Front garden in neat lawn, pink stone display and well stocked borders. Paved pathway. Attached oil-fired boiler house. Enclosed garden to rear with 5ft timber fencing. Raised composite decking. Stone display area with gardens in neat lawn and low maintenance barked borders edged in quarried stone. PVC tank. Outside tap and light.

IMPORTANT NOTE TO ALL POTENTIAL PURCHASERS;

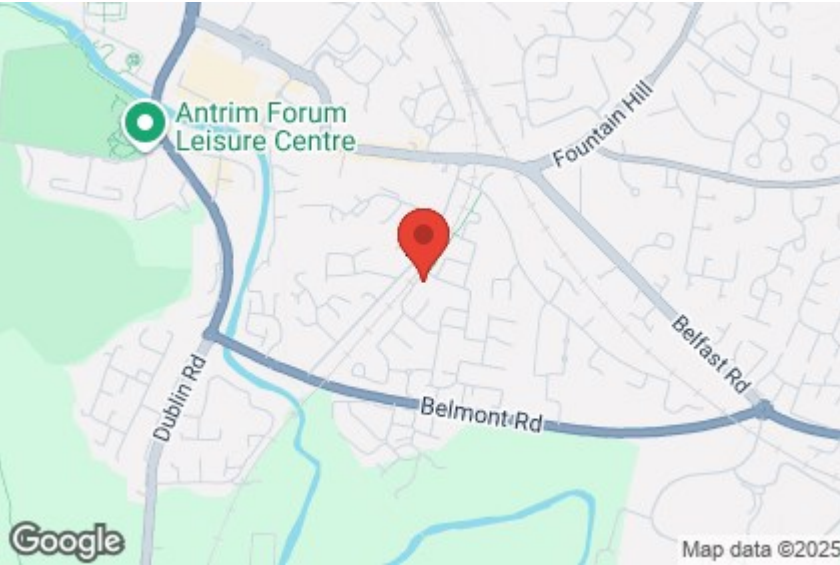
Please note, none of the services or appliances have been tested at this property





Energy Efficiency Rating

	Current	Potential
Very energy efficient - lower running costs		
(92 plus) A		
(81-91) B	81	81
(69-80) C		
(55-68) D		
(39-54) E		
(21-38) F		
(1-20) G		
Not energy efficient - higher running costs		
Northern Ireland	EU Directive 2002/91/EC	



Mortgage IQ

Talk to one of our advisers today

12 Church Street, Antrim, Co. Antrim, BT41 4BA
T: 028 9417 0000
E: antrim@mortgageiq.co.uk

IQ

WE KNOW WHAT IT TAKES

Country Estates (N.I) Ltd. for themselves and the Vendors of this property whose agents are, give notice that:

These particulars do not constitute any part of an offer or contract

All statements contained in these particulars as to this property are made without responsibility on the part of Country Estates (N.I) Ltd. or the vendor

None of the statements contained in these particulars as to this property are to be relied on as statements or representations of fact

Any intending purchaser must satisfy himself or otherwise as to the correctness of the statement contained in these particulars

The vendor does not make or give, and neither Country Estates (N.I) Ltd. nor any person in their employment, has any authority to make or give representation or warranty whatever in relation to this property.

