

## 80A Nutts Corner Road, Crumlin, BT29 4SJ



## Asking Price £450,000

GENEROUS PC SUM TOTALLING £25,000

**>Sales >New Homes >Commercial >Rentals >Mortgages**

Antrim  
12 Church Street  
BT41 4BA  
Tel: (028) 9446 6777

Ballyclare  
51 Main Street  
BT39 9AA  
Tel: (028) 9334 0726

Glengormley  
9A Ballyclare Road  
BT36 5EU  
Tel: (028) 9083 0803



**We are delighted to offer for sale this luxurious, new build property currently under construction and extending to circa 2,485Sq.Ft. (inc. Garage) and occupying a generous site in this sought after semi-rural location.**

**Ideally suited to those with a growing family who need space both inside and out, this property is positioned close to Nutts Corner Roundabout and main arterial routes providing easy access to Belfast International Airport, Crumlin, Lisburn and Belfast City Centre.**

**Being finished to an exceptionally high standard both inside and out, the property comprises five large bedrooms, two of which have ensuite shower rooms with the first floor master bedroom boasting a large walk-in dressing room and generous ensuite while the ground floor guest bedroom with ensuite future proofs the the property for those unable to manage the stairs.**

**In addition to the main living room the property comprises a large open plan kitchen, family and informal dining area, together with the added bonus of a spacious utility complete with ground floor W/C. The property benefits from a generous overall PC sum allowance of £25,000 made up of Kitchen PC sum of £15,000 for the units, worktops, sinks, taps and appliances with an additional sum of £5,000 for all sanitary ware, £2,000 for carpets and £2,000 for tiles (does not include fitting which will be at the purchasers own expense) and £1,000 for a stove (all from the developers nominated suppliers).**

**For more information please contact either of the joint agents to arrange an on-site meeting.**

**Early viewing strongly recommended.**

**VIEWING BY PRIVATE APPOINTMENT THROUGH OUR ANTRIM OFFICE ON 028 94466777**

## ACCOMMODATION

Composite entrance door with triple glazed inset side lights and over light to:

### **DOUBLE HEIGHT ENTRANCE HALL 20'10 x 7'10**

Stair case to first floor gallery landing.

### **CLOAK STORAGE**

(with manifolds for under floor heating). Meter cupboard.

### **LIVING ROOM 14'11" x 12'11"**

### **KITCHEN INTO INFORMAL DINING 25'11" x 13'11"**

(max)

- PC Sum for kitchen and utility £15,000

- Modern fitted kitchen with a choice of doors and worktops from "Glenwood Kitchens" or "Fitted Furniture Systems"

- Plumbed and electric for center island. Low voltage down lights.

- We have tailored the layout design to optimise the unit and worktop space in each kitchen

- Integrated appliances to include for hob, electric oven & hood, fridge freezer and dishwasher

- Concealed underlighting to high level units

- Low voltage downlights

Open to;

### **FAMILY ROOM 13'11" x 11'11"**

Dual aspect windows. PVC triple glazed French doors and matching sidelights to extensive fully paved patio. Low voltage downlights.

### **UTILITY 10'0" x 10'0"**

- High quality utility units and choice of door finishes, worktops and handles from "Glenwood Kitchens" or "Fitted Furniture Systems".

- Plumbed for washing machine and space for dryer.

- Extractor fan.

- PVC door to rear.

### **GROUND FLOOR W/C 9'6 x 3'2**

Plumbed for W/C and sink unit. Extractor fan.

### **BEDROOM 4 19'0" x 11'11"**

(max) High level TV point. Low voltage down lights.

### **ENSUITE 10'0" x 4'11"**

Plumbed for W/C, wash hand basin and shower. Polished chrome heated towel rail. Low voltage downlights. Extractor fan.

### **BEDROOM 5 13'11" x 10'11"**

Dual aspect windows. Low level TV point. Full depth windows. Low voltage downlights.

### **FIRST FLOOR GALLERY LANDING 13'4 x 7'9**

Low voltage down lights. Access to loft. Large walk-in hot press.

### **PRINCIPAL BEDROOM 14'11" x 12'5"**

(into dormer) with bench seating to window. Low voltage down lights. High level TV point. Radiator. Spacious walk-in wardrobe.

### **ENSUITE 9'0" x 8'0"**

Plumbed low flush W/C, wash hand basin and shower. Low voltage downlights. Extractor fan. Gable side window.

### **BEDROOM 2 16'6" x 12'5"**

(into dormer) with bench seating to window. Low voltage down lights. Dual aspect windows. Low level TV point. Radiator.

### **BEDROOM 3 16'6" x 15'5"**

(max) Rear window and double glazed roof light. Low level TV point. Low voltage downlights. Access to eaves storage.

### **BATHROOM 10'0" x 8'0"**

Plumbed for low flush W/C, wash hand basin and bath. Low voltage downlights. Extractor fan. Double glazed roof light. Radiator.

**DETACHED GARAGE 21'2 x 14'8**

Roller shutter door. Boiler. PVC door with double glazed inset and windows.

**OUTSIDE**

Shared tarmac entrance with access via feature contemporary style electric gates to private tarmac driveway. Tarmac drive to front, side and rear with access to detached garage. Gardens to front and rear topsoiled and sown out. Extensive paved patio area. Mature laurel hedge plants. Outside tap and lights.

**SPECIFICATION****SANITARY WARE**

- A generous PC allowance of £5,000 has been made available for sanitary through the nominated supplier "Islandbawn Stores Plumbing Centre"
- Heated chrome towel rails to bathroom and ensuites

**FLOORING**

- Carpet and underlay in Lounge, Bedrooms, Stairs and Landing - PC sum of £2,000 through "Feeny Flooring"
- Tiled floor to kitchen/ dining/ family room, Utility, Bathroom, Ensuites and W/C - PC sum of £2,000 through "DB Tiles" (fitting not included in PC sum or price of house)

**HEATING**

- Oil-fired central heating with underfloor heating to downstairs and radiators to first floor
- Solar panels to the garage roof
- Energy efficient boiler
- PC sum for stove £1,000

#### **INTERNAL FINISHES**

- Painted internal walls and ceilings
- White "Mexican" style doors with quality ironmongery
- Painted skirting boards and architraves
- White primed MDF staircase with white moulded handrail and straight fluted balustrade (Upgrade available)
- Comprehensive range of electrical sockets, switches and telephone points
- Master TV point in Lounge
- Fully fitted security alarm
- Mains operated smoke and carbon monoxide detectors

#### **EXTERNAL FINISHES**

- Front and rear gardens sown in grass seed
- Planting to include laurel hedging
- Flagged patio areas and paths
- Tarmac driveway with contemporary style electric gates
- Front and rear external lighting
- Outside water supply
- uPVC tripled glazed windows in black frames

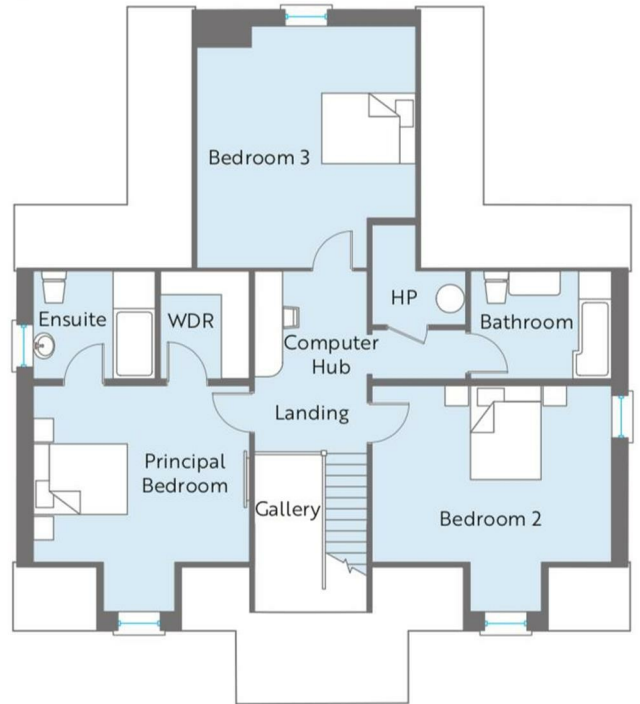
#### **IMPORTANT NOTE TO ALL POTENTIAL PURCHASER'S;**

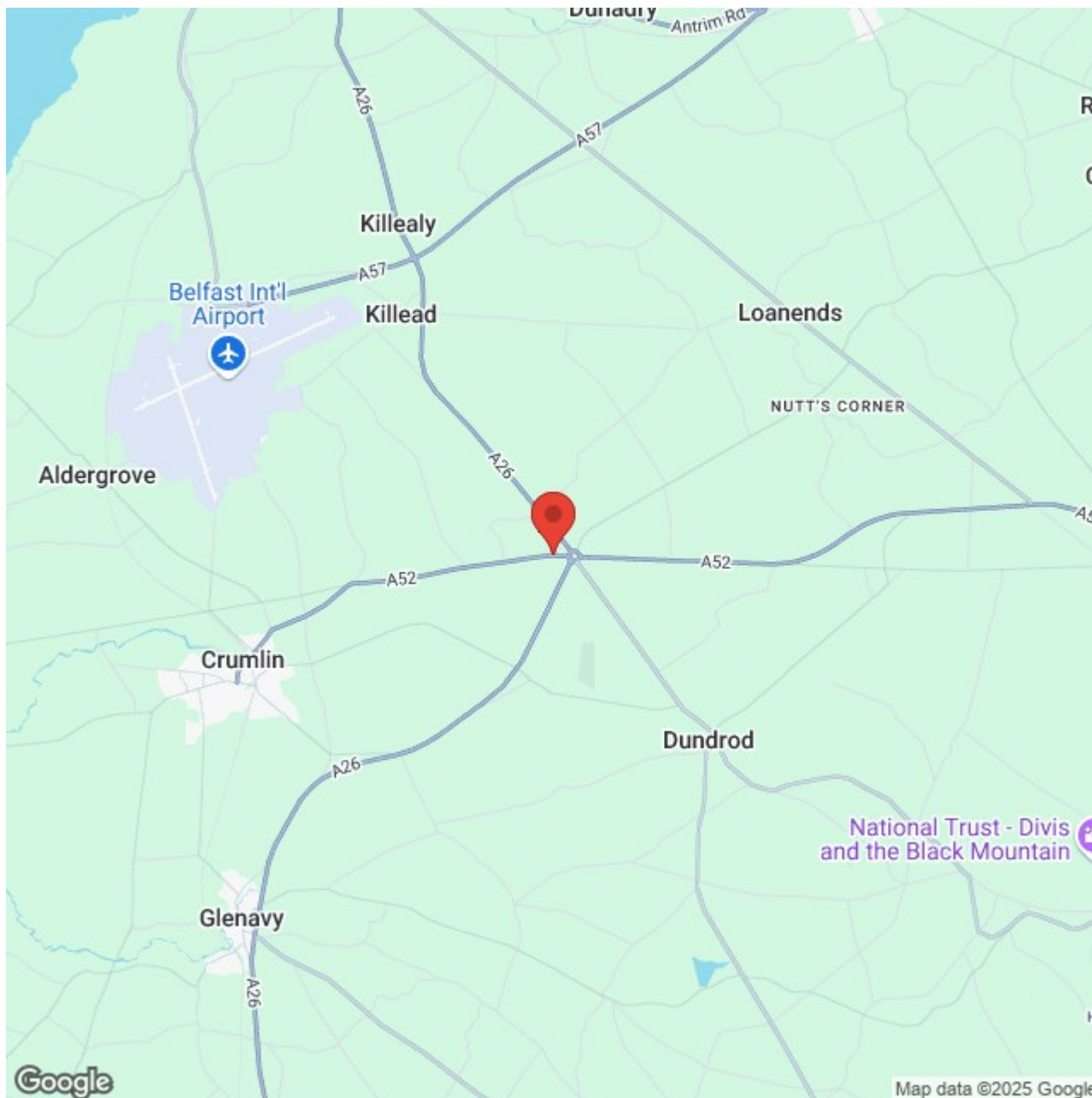
Please note, none of the services or appliances have been tested in this property.

**NOT TO SCALE & FOR REFERENCE PURPOSES ONLY**









**Mortgage IQ**

**Talk to one of our advisers today**

12 Church Street, Antrim, Co. Antrim, BT41 4BA

T: 028 9417 0000

E: [antrim@mortgageIQ.co.uk](mailto:antrim@mortgageIQ.co.uk)

**IQ**  
WE KNOW WHAT IT TAKES

Country Estates (N.I.) Ltd. for themselves and the Vendors of this property whose agents are, give notice that:

These particulars do not constitute any part of an offer or contract

All statements contained in these particulars as to this property are made without responsibility on the part of Country Estates (N.I.) Ltd. or the vendor

None of the statements contained in these particulars as to this property are to be relied on as statements or representations of fact

Any intending purchaser must satisfy himself or otherwise as to the correctness of the statement contained in these particulars

The vendor does not make or give, and neither Country Estates (N.I.) Ltd. nor any person in their employment, has any authority to make or give representation or warranty whatever in relation to this property.