



A charming four bedroom semi detached home situated in a quiet cu-de-sac in Saintfield  
Bright and airy living room complete with feature fireplace and stunning views over the countryside  
Spacious solid wood kitchen with an open plan dining room - perfect for modern day life  
Split level bedrooms with two doubles and a WC on the ground floor  
Master bedroom complete with built in storage and ensuite shower room  
A further second double bedroom on the first floor  
Modern family bathroom complete with stylish three piece suite  
Oil fired central heating and fully double glazed throughout

1 

4 

null 





## Forge Forward!

A beautifully presented four-bedroom semi-detached home offering the perfect blend of countryside charm and modern living. Situated just a short stroll from the vibrant Saintfield Village, this delightful property enjoys a tranquil setting with picturesque views, while remaining close to local amenities and schools.

The property comprises a welcoming entrance hall, a bright and airy living room complete with striking feature fireplace and stunning viewings over the surrounding countryside, and a spacious solid wood kitchen benefitting from built in appliances which opens into a generously sized dining area - an ideal space for everyday family life. The unique split-level layout provides excellent flexibility, with two well-proportioned double bedrooms and a convenient WC on the ground floor. Upstairs, the master bedroom benefits from built-in storage and a private ensuite shower room, alongside a further spacious double bedroom and a contemporary family bathroom with a stylish three-piece suite.

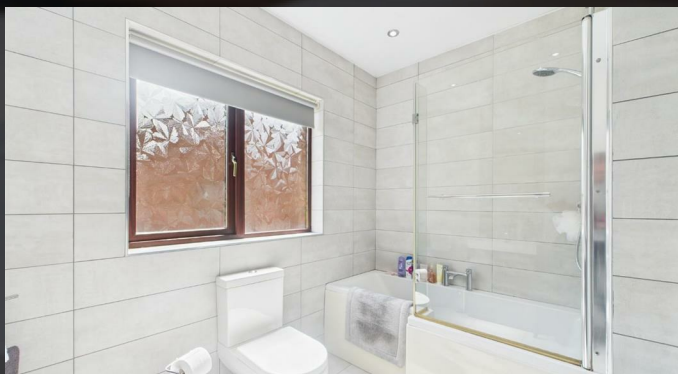
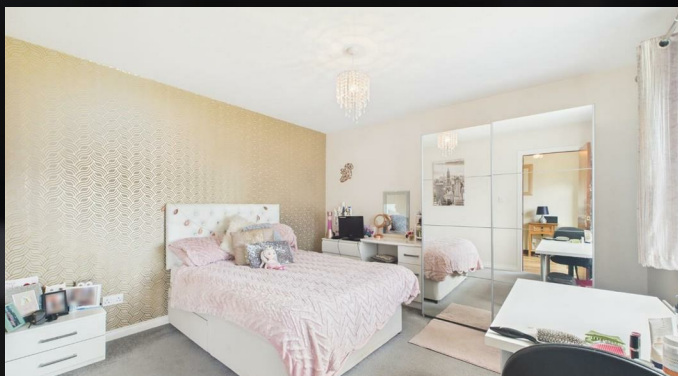
Outside, the front garden is laid in lawn with a tarmac driveway to the side providing excellent off street parking which leads to an integrated garage complete with light and power - adding excellent storage space or use as a workshop. The fully enclosed spacious rear garden is laid in lawn with an additional patio area making it the perfect space for outdoor dining or socialising with friends and family.

Located in the popular Forge Hill Court development, this wonderful home is within walking distance to a fantastic range of local shops, cafes, and amenities in Saintfield Village and lies within the catchment area for a range of highly regarded primary and secondary schools.

## Your Next Move...

Thinking of selling, it would be a pleasure to offer you a **FREE VALUATION** of your property.

To arrange a viewing or for further information contact Michael Chandler Estate Agents on 02890 450 550 or email [property@michael-chandler.co.uk](mailto:property@michael-chandler.co.uk).



**Mortgage advice is available from our in-house Mortgage Advisor, you can find out how much you can borrow within minutes!**

## REQUEST VALUATION

We would be delighted to visit your property and give you a Free Valuation and some helpful advice regarding the sale or rental of your property to you!

513 Ormeau Road, Belfast, BT7 3GU

**02890 450 550**

[property@michael-chandler.co.uk](mailto:property@michael-chandler.co.uk)

[michael-chandler.co.uk](http://michael-chandler.co.uk)

Michael  
**Chandler**  
ESTATE AGENTS