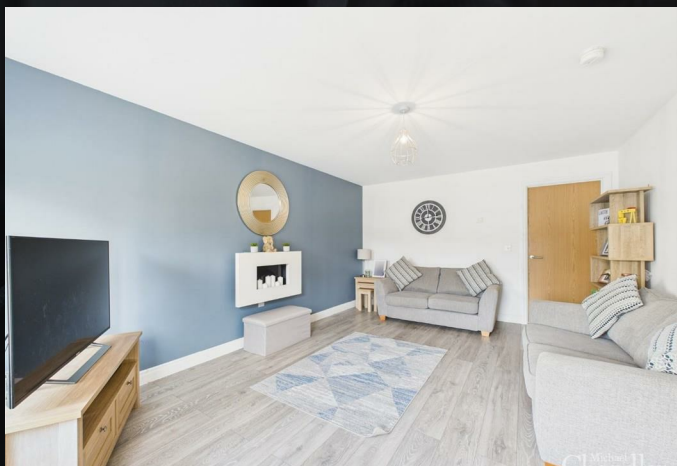
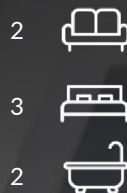




A beautifully presented three-bedroom townhouse in the highly popular Thaxton Village area
A warm and welcoming entrance hall
Spacious living area offering the perfect space to unwind after a busy day
Modern kitchen complete with built-in appliances, dining area and sliding doors to the rear garden
Convenient downstairs WC
Spacious landing area benefitting from additional storage cupboard
Three generously sized bedrooms all with plenty of natural light flowing in



Fabulous Fountain!

Welcome to this beautifully presented three-bedroom modern townhouse, ideally located in the very popular Thaxton Village area of Lisburn. Offering contemporary living with stylish finishes throughout, this home is perfect for families, professionals, or investors alike.

When you enter the property, you are greeted by a welcoming entrance hall that sets the tone for the rest of the property. The large living area with plenty of natural light, provides a bright and airy space to relax and entertain. The modern kitchen comes complete with built-in appliances, a dining area and sliding doors out to the rear garden whilst the convenient downstairs WC finishes the downstairs layout beautifully. Upstairs, you are greeted with a generously sized landing area benefitting from additional storage space, three generously sized bedrooms, all designed with comfort in mind and a modern family bathroom that features a contemporary three-piece suite, offering a fresh and stylish space to unwind.

Outside, to the front of the property, a tarmac driveway provides ample space for off street parking whilst the fully enclosed rear garden has been thoughtfully designed with a stylish decking area, artificial grass, and a flowerbed laid in stones, creating a low-maintenance yet attractive, private outdoor space.

Fountain Mews is situated in a modern development located on the outskirts of Lisburn and is surrounded by beautiful countryside. The location offers easy access to Lisburn & Belfast City Centres as well as the M1. There is a good choice of local schools in the area, a great choice of local amenities including the Eurospar convenience store and Sprucefield is a short drive away.

Your Next Move...

Thinking of selling, it would be a pleasure to offer you a FREE VALUATION of your property.

To arrange a viewing or for further information contact Michael Chandler Estate Agents on 02890 450 550 or email property@michael-chandler.co.uk



Mortgage advice is available from our in-house Mortgage Advisor, you can find out how much you can borrow within minutes!

REQUEST VALUATION

We would be delighted to visit your property and give you a Free Valuation and some helpful advice regarding the sale or rental of your property to you!

513 Ormeau Road, Belfast, BT7 3GU

02890 450 550

property@michael-chandler.co.uk

michael-chandler.co.uk

Michael
Chandler
ESTATE AGENTS