





A stunning detached bungalow located just off the Saintfield Road  
 Beautifully presented and in immaculate condition throughout  
 Welcoming entrance hall  
 Spacious living room with a large picture window  
 Dining room with potential to restore to 3rd bedroom if required  
 Modern kitchen with a range of integrated appliances  
 Two well-proportioned bedrooms  
 Contemporary shower room  
 Attic room via fixed staircase  
 Attached garage  
 Oil fired central heating & double glazed throughout  
 Spacious rear garden laid in lawns with a patio areas and an array of plants & shrubs  
 Front garden with a selection of trees, plants & shrubs  
 Spacious driveway providing off-street parking to the front of the garage  
 Convenient location with an excellent range of local amenities  
 Within the catchment area for a choice of leading schools



## Best Of The West!

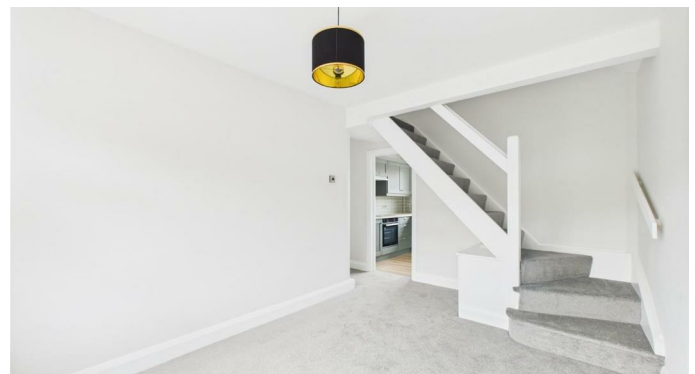
This wonderful detached bungalow offers spacious and versatile accommodation, stunning mature gardens and a convenient location just off the Saintfield Road. The property is beautifully presented, in immaculate condition and benefits from quality finishes throughout resulting in a place that you will be proud to call home for many years to come. There is an abundance of storage space in the attic to avail of to keep the clutter out of your fantastic new home!

The bungalow comprises a welcoming entrance hall, a spacious living room with a feature fireplace and large, floor to ceiling window that looks over the wonderful rear garden and offers stunning views over Belfast beyond, a modern fitted kitchen which benefits from a good range of units and integrated appliances, a dining area that could be turned into a third bedroom, two well-proportioned bedrooms and a contemporary shower room. There is also an attic room with a dormer style window - again with great views over Belfast which is accessed via a fixed staircase.

To the front there is a spacious driveway that leads to an attached garage and a garden that is complimented by a selection of plants, shrubs and trees. The rear garden is an absolute delight with a superb patio to relax on with some al fresco dining and two well-maintained lawns for the children to play on, all of which is complimented by a beautiful selection of plants & shrubs.

The property is located just off the main Saintfield Road with a host of amenities close by and the Cairnshill park and ride is literally across the road, ensuring access to Belfast city centre is easy and quick. Forestside shopping centre is only five minutes away and there is an excellent range of schools within the vicinity.

**Asking Price £289,950**







Ground floor



Floor 1

**Mortgage advice is available from our in-house Mortgage Advisor, you can find out how much you can borrow within minutes!**

## REQUEST VALUATION

We would be delighted to visit your property and give you a Free Valuation and some helpful advice regarding the sale or rental of your property to you!

513 Ormeau Road, Belfast, BT7 3GU

**02890 450 550**

[property@michael-chandler.co.uk](mailto:property@michael-chandler.co.uk)

[michael-chandler.co.uk](http://michael-chandler.co.uk)

Michael  
**Chandler**  
ESTATE AGENTS