

Apt 33 Bass Buildings, 38 Alfred Street, Belfast, County Antrim BT2



Offers Over £129,950



If you're looking for an apartment right in the heart of the city, this could be the one for you!

Bass Building is a fantastic development located on Alfred Street. This unique duplex apartment comprises of separate kitchen, spacious living room/dining area, two double bedrooms (master en suite shower room) and separate family bathroom.

This is a great home/investment opportunity.

NB; This apartment does not include a car parking space.

Kitchen
8'2" x 12'10"



Separate kitchen

Living/Dining Room
14'1" x 11'5"



Separate Living/Dining Room

Master Bedroom
6'6" x 13'3"



Master Bedroom with ensuite shower room

Bedroom 2
10'10" x 9'11"



These particulars are intended only as general guidance. The Company therefore gives notice that none of the material issued or visual depictions of any kind made on behalf of the Company can be relied upon as accurately describing any of the Specified Matters prescribed by any Order made under the Property Misdescriptions Act 1991. Nor do they constitute a contract, part of a contract or a warranty. Floor plan is for illustrative purposes only. Measurements are approximate and not to scale.

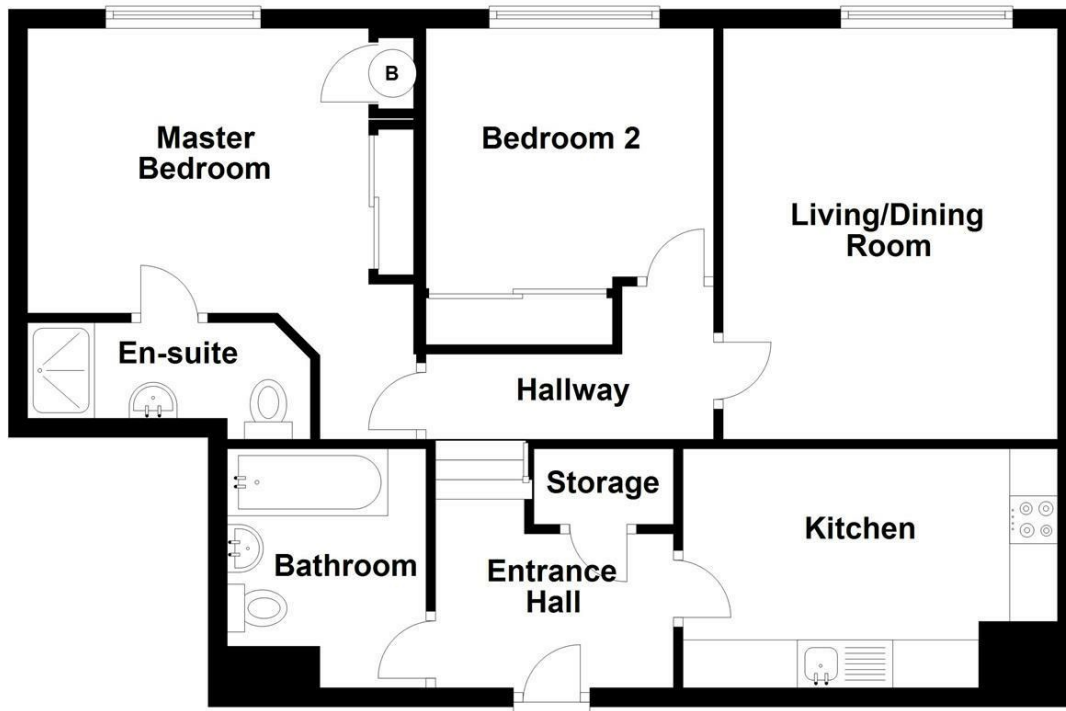
Bathroom
8'2" x 6'9"



Vinyl flooring; three piece white bathroom suite; shower over bath; radiator; extractor fan;

Ground Floor

Approx. 68.8 sq. metres (740.7 sq. feet)



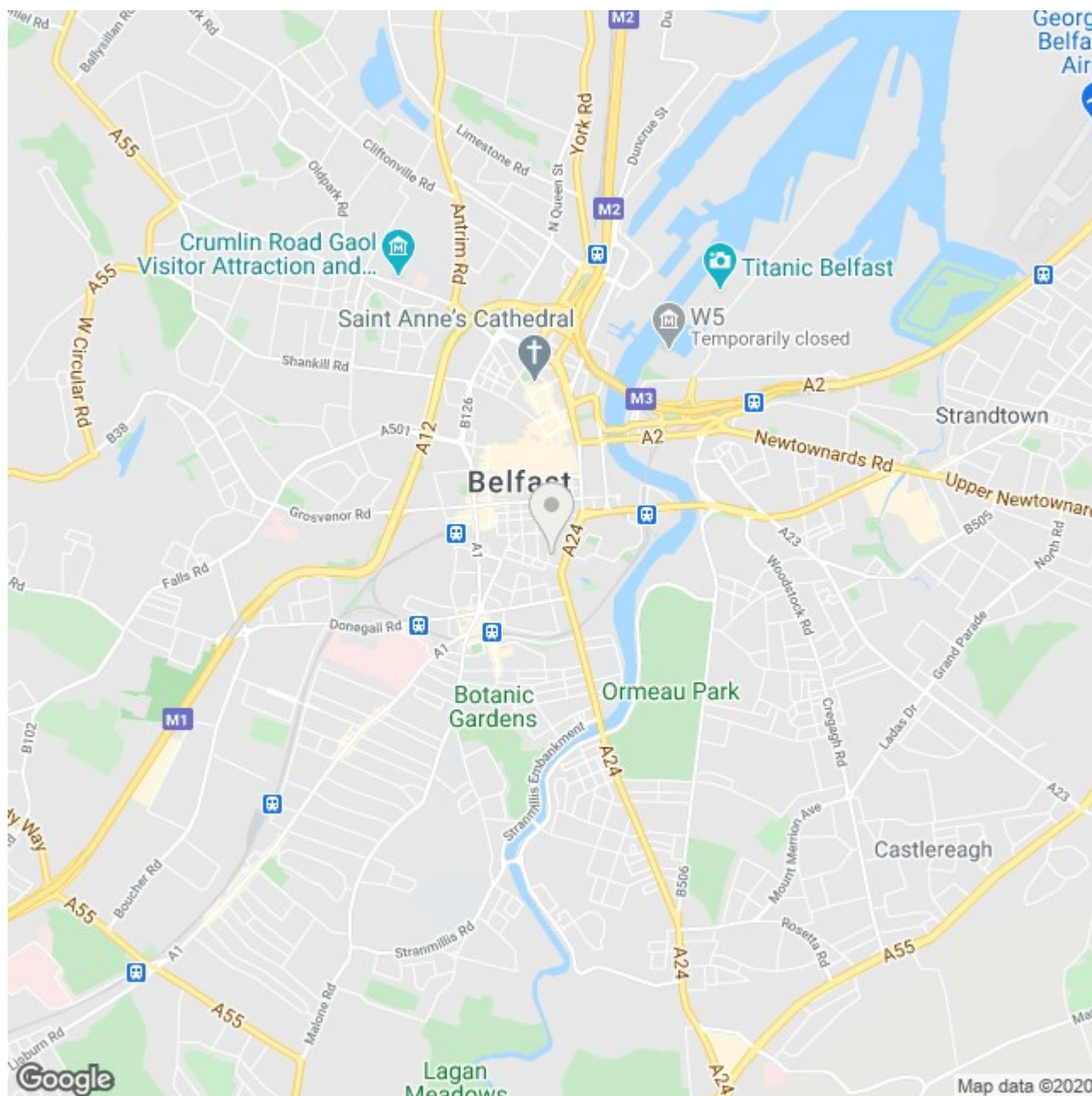
Total area: approx. 68.8 sq. metres (740.7 sq. feet)

This plan is for illustrative purposes only.
Plan produced using PlanUp.

33 Bass Building, Belfast

BELVOIR!

Belvoir - Belfast South
515-517 Ormeau Road, Belfast, Co Antrim, BT7 3GU



Energy Efficiency Rating		
	Current	Potential
Very energy efficient - lower running costs		
(92 plus) A		
(81-91) B		
(69-80) C		
(55-68) D		
(39-54) E		
(21-38) F		
(1-20) G		
Not energy efficient - higher running costs		
Northern Ireland	EU Directive 2002/91/EC	

Environmental Impact (CO ₂) Rating		
	Current	Potential
Very environmentally friendly - lower CO ₂ emissions		
(92 plus) A		
(81-91) B		
(69-80) C		
(55-68) D		
(39-54) E		
(21-38) F		
(1-20) G		
Not environmentally friendly - higher CO ₂ emissions		
Northern Ireland	EU Directive 2002/91/EC	

Call: 028 9022 8409

belvoir.co.uk