

5 Downshire Court , Newry, BT34 1DA

Offers Over £194,950

Located in the heart of Newry City Centre, this charming three-bedroom home in the popular Downshire Court development offers the perfect mix of comfort, convenience, and community. Whether you're a growing family or a busy professional, this property has everything you need to feel right at home.

Step inside and you'll be welcomed by a bright and spacious living area — ideal for relaxing evenings or entertaining guests. The well-designed kitchen offers plenty of room for cooking and dining, making everyday living both practical and enjoyable. Upstairs, you'll find three generously sized bedrooms, each offering a comfortable retreat with space to make your own. The main bathroom is conveniently located and fitted to meet your day-to-day needs with ease.

One of the standout features of this home is its unbeatable location. Families will appreciate having well-regarded local schools just minutes away, within walking distance to Newry City Centre and nearby shops — including Tesco — make daily errands simple and convenient. For those who commute, the property offers excellent transport connections, with quick and easy access to the motorway, making travel to Belfast, Dublin,

5 Downshire Court

, Newry, BT34 1DA



- Off Street Parking
- Secure Rear Garden
- Integrated Garage
- Semi Detached
- Oil Fired Heating

ADDITIONAL INFORMATION

Accommodation in Breif

GROUND FLOOR

Entrance Hall

6'2" x 17'3" (1.90m x 5.26m)

Living Room

14'9" x 12'0" (4.50m x 3.66m)

Kitchen

18'2" x 9'9" (5.56m x 2.99m)

Utility

9'9" x 7'3" (2.99m x 2.23m)

FIRST FLOOR

Bedroom 1

12'2" x 12'0" (3.73m x 3.66m)

Bedroom 2

12'0" x 9'0" (3.66m x 2.75m)

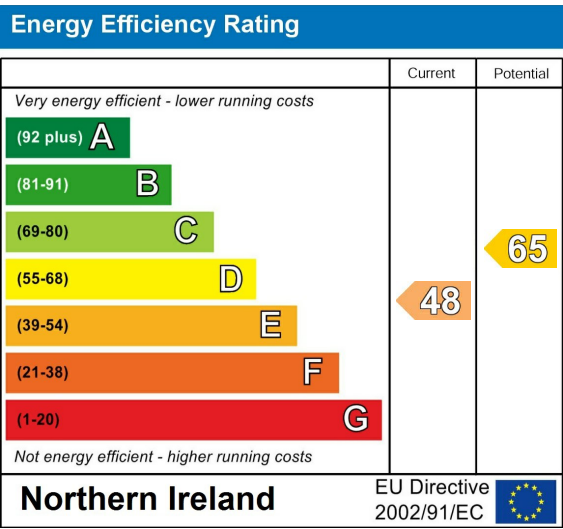
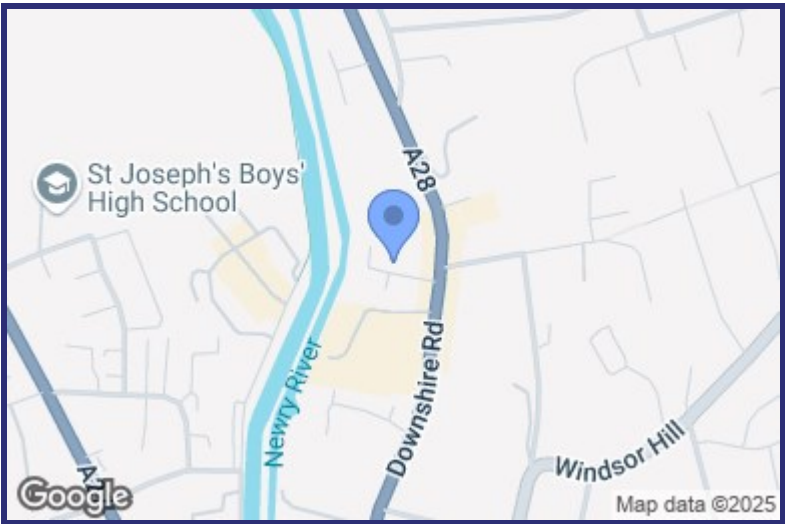
Bedroom 3

9'2" x 7'10" (2.81m x 2.39m)

W.C

9'2" x 5'2" (2.81m x 1.58m)

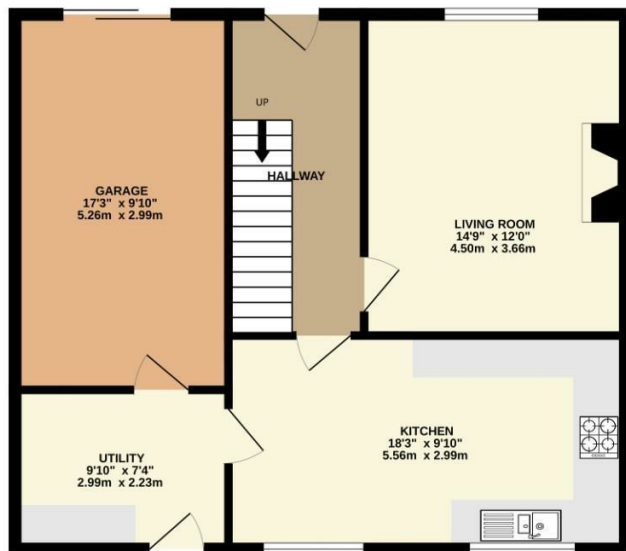
EXTERIOR



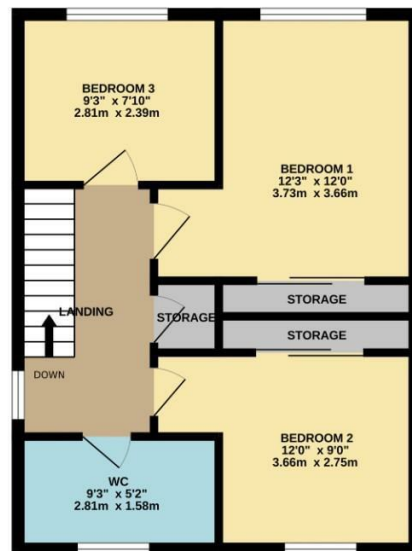


Floor Plan

GROUND FLOOR
682 sq.ft. (63.3 sq.m.) approx.



1ST FLOOR
448 sq.ft. (41.6 sq.m.) approx.



TOTAL FLOOR AREA : 1130 sq.ft. (105.0 sq.m.) approx.

Whilst every attempt has been made to ensure the accuracy of the floorplan contained here, measurements of doors, windows, rooms and any other items are approximate and no responsibility is taken for any error, omission or mis-statement. This plan is for illustrative purposes only and should be used as such by any prospective purchaser. The services, systems and appliances shown have not been tested and no guarantee as to their operability or efficiency can be given.
Made with Metropix ©2025

We look forward to working with you...



We get there together

Our experienced and trusted team have assisted 1000's of people with buying, selling and letting.



We're here for you

Client care is at the very heart of what we do. We will guide and support you every step of the way.



Always close by

With multiple offices and a leading marketing team, we will make sure that you get the very best result.

Newry:
30 Monaghan Street, Newry, Co.Down, BT35 6AA
T: 028 300 50633 E: newry@bradleyeni.com

Warrenpoint:
25 Duke Street, Warrenpoint, Co.Down, BT34 3JY
T: 028 417 73777 E: warrenpoint@bradleyeni.com

Rostrevor:
14 Bridge Street, Rostrevor, Co.Down, BT34 3BG
T: 028 417 39999 E: rostrevor@bradleyeni.com

Belfast:
55-59 Adelaide Street, Belfast, Co.Antrim, BT2 8FE
T: 028 962 09909 E: belfast@bradleyeni.com

These particulars, whilst believed to be accurate are set out as a general outline only for guidance and do not constitute any part of an offer or contract. Intending purchasers should not rely on them as statements of representation of fact, but must satisfy themselves by inspection or otherwise as to their accuracy. No person in this firms employment has the authority to make or give any representation or warranty in respect of the property.