



ULSTER PROPERTY SALES

UPS

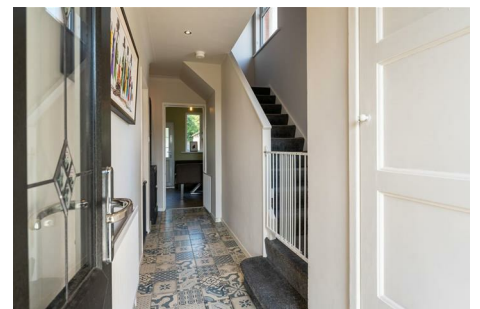
BANGOR BRANCH

88 Main Street, Bangor, County Down,
BT20 4AC

028 9127 1185

bangor@ulsterpropertysales.co.uk

NETWORK STRENGTH - LOCAL KNOWLEDGE



62 THORNLEIGH GARDENS

Bangor BT20 4NP

- 3 Bedrooms
- Spacious Lounge
- Modern Kitchen / Dining Area
- uPVC Double Glazing
- Phoenix Gas Heating System
- White Bathroom Suite
- Well Presented Throughout
- Detached Garage

Energy Efficiency Rating		
	Current	Potential
Very energy efficient - lower running costs		
(92 plus) A		
(81-91) B		
(69-80) C		
(55-68) D		
(39-54) E		
(21-38) F		
(1-20) G		
Not energy efficient - higher running costs		
	72	72
Northern Ireland		EU Directive 2002/91/EC

Offers Over £210,000

62 Thornleigh Gardens

, Bangor, BT20 4NP



ACCOMMODATION

uPVC double glazed patio door into ...

ENTRANCE PORCH

Half opaque glazed door into ...

ENTRANCE HALL

Built-in cloaks cupboard.

LOUNGE

13'4" x 12'5" (4.06m x 3.78m)

Multi-fuel stove with slate hearth.

Laminated wood floor.

KITCHEN/DINING AREA

19'7" x 12'7" (5.97m x 3.84m)

Range of Sage high and low level cupboards and drawers with oak,

roll edge work surfaces. Aga. built-in Beko oven. 11/2 tub single drainer sink unit with mixer taps. Plumbed for washing machine. Beko integrated dishwasher. Part tiled walls. 6 Downlights. Ceramic tiled floor.

STAIRS TO LANDING

BEDROOM 1

13'5" x 11'1" (4.09m x 3.38m)

BEDROOM 2

12'7" x 10'11" (3.84m x 3.33m)

Half panelled walls.

BEDROOM 3

10'1" x 8'2" (3.07m x 2.49m)

Built-in wardrobe.

BATHROOM

White suite comprising: Panelled bath. Pedestal wash hand basin. Part tiled walls. Built-in storage cupboard. Chrome heated rail.

SEPARATE W.C.

OUTSIDE

DETACHED GARAGE

28'2" x 7'11" (8.59m x 2.41m)

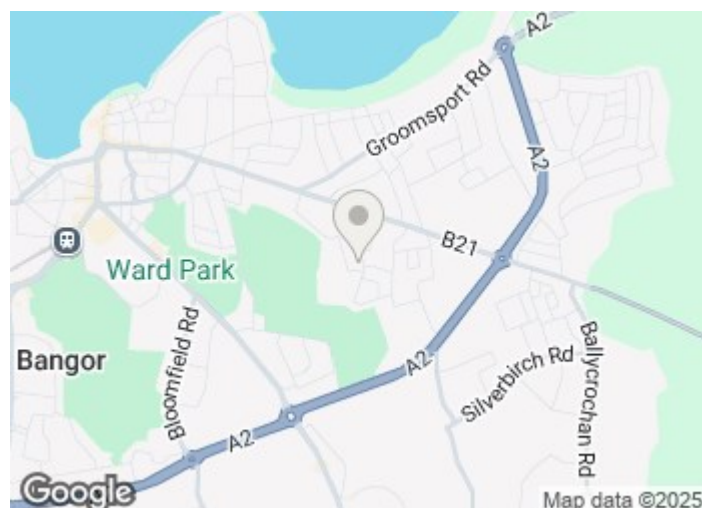
Up and over door. Light and power.

FRONT

Garden in lawn.

REAR

Enclosed garden in lawn. PVC oil tank. Tap. Light.



Directions



Floor Plan

These particulars, whilst believed to be accurate are set out as a general outline only for guidance and do not constitute any part of an offer or contract. Intending purchasers should not rely on them as statements of representation of fact, but must satisfy themselves by inspection or otherwise as to their accuracy. No person in this firms employment has the authority to make or give any representation or warranty in respect of the property.

