



ULSTER PROPERTY SALES

UPS

BALLYHACKAMORE BRANCH

324 Upper Newtownards Road, Belfast,
BT4 3EX

028 9047 1515

ballyhackamore@ulsterpropertysales.co.uk

NETWORK STRENGTH - LOCAL KNOWLEDGE



9 BLENHEIM DRIVE, BELFAST, BT6 9GB

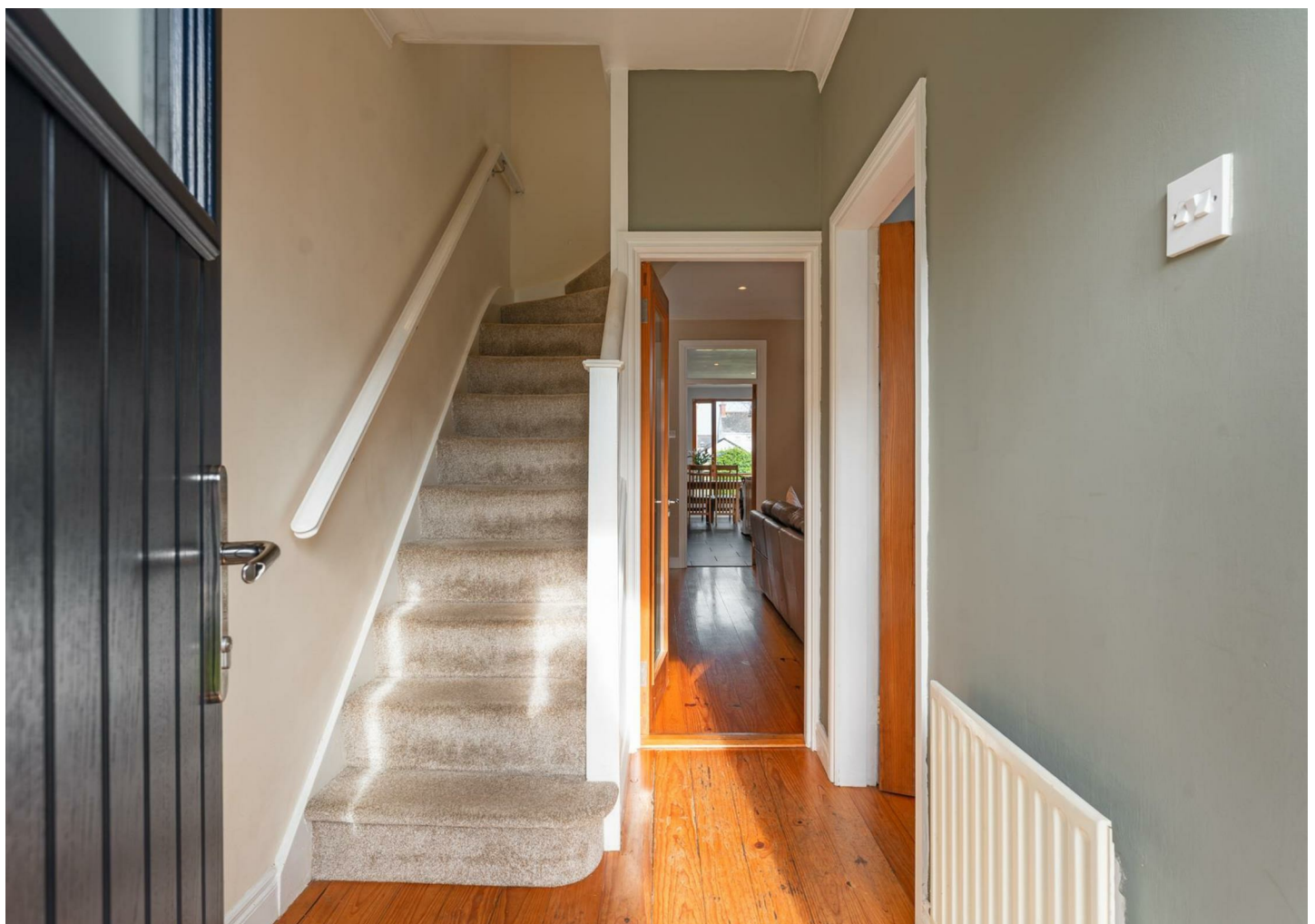
OFFERS AROUND £275,000

A beautiful red brick semi-detached property benefiting from a double storey extension to the rear, this property will impress every viewer with its bespoke corner feature windows and the generous accommodation finished to a high standard.

The accommodation includes attractive solid pinewood flooring from the entrance hall, lounge with generous bay window, through to extended living room with high ceilings and floor to ceiling corner feature window. Further to the rear, is an extended kitchen comprising range of 'shaker style' units with granite worktops, built-in oven with five ring gas hob, recessed spotlighting and ceramic tiled flooring, open to dining area, perfect for entertaining, overlooking a private garden.

The first floor offers three well proportioned bedrooms, off a generous landing with double built-in robes and separate hotpress. Furthermore, a slingsby ladder to partly floored roofspace, offering great storage space. With the first floor benefiting from an extension, the family bathroom is much larger and incorporates a modern white suite, comprising of inset bath with tiled surround, built-in shower area, built-in vanity unit, glass block feature wall, and recessed spotlighting.

The outside includes a small lawn to front with brick paviour driveway to side, enclosed rear garden with brick paviour patio leading to good sized lawn and garden shed. This home is sure to impress with the attention to detail by previous owners, and the additional space they have created. Situated just off the Castlereagh Road, in a much sought after residential area, that is both convenient to the outer ring, Belfast city centre, and of course Ballyhackamore, ideal for young professionals or families wanting to be close to many local amenities.



Key Features

- Excellent Red Brick-Semi Detached Home With Double Storey Extension
- Modern Kitchen With Granite Worktops & Five Ring Gas Hob, Open To Dining Area
- Spacious Modern Family Bathroom With Inset Bath And Separate Shower Cubicle
- Small Garden To Front, Driveway, And Enclosed Garden To Rear With Patio And Shed
- Lounge With Bay Window Leading To Living Room With Floor To Ceiling Window
- Three Well Proportioned Bedrooms To First Floor, With Additional Storage On Landing
- Partly Floored Roofspace, Gas Fired Central Heating System & Upvc Double Glazing
- Ideal Convenient Location Close To A Wide Range Of Local Amenities, Parks And Schools



Accommodation Comprises

Entrance Hall

Solid pine wood floor.

Lounge

10'8 x 10'3

(into bay) Hole in wall mock fireplace with slate hearth, solid pine wood floor.

Living Room

15'9 x 14'7

(at widest points) Solid pine wood floor, corner feature window, cupboard under stairs.

Dining/Kitchen

20'5 x 9'1

(at widest points) Excellent range of high and low level shaker style units with granite worksurfaces and upstand, inset 1 1/4 bowl single drainer stainless steel sink unit with mixer tap, built in under oven with five ring gas hob, stainless steel splashback and stainless steel extractor hood, plumbed for washing machine, space for fridge freezer, recessed spotlighting, ceramic tiled floor, open to dining room with corner feature windows.

First Floor

Landing

Double built in robes, separate hotpress, access to roof space with slingsby ladder, recessed spotlighting.

Bedroom 1

10'9 x 9'6

Bedroom 2

8'8 x 8'8

Bedroom 3

7'9 x 6'0

Bathroom

Modern white suite comprising inset bath with tiled surround and mixer tap, built in shower area with built in shower, Pvc wall cladding and shower screen door, built in vanity unit with mixer tap, low flush WC, built in mirror cabinet, glass block feature, recessed spotlighting, extractor fan.

Roofspace

Partly floored, Velux window, slingsby ladder.

Outside

Small lawn to front with boundary hedge, brick paved driveway to side, enclosed rear North West facing garden with brick paved patio leading to lawn surrounded by flowerbeds and boundary fence, garden shed, boiler house with gas fired boiler.











Energy Efficiency Rating		
	Current	Potential
Very energy efficient - lower running costs		
(92 plus) A		
(81-91) B		
(69-80) C		
(55-68) D		
(39-54) E		
(21-38) F		
(1-20) G		
Not energy efficient - higher running costs		
Northern Ireland	63	66
		EU Directive 2002/91/EC

Questions you may have. **Which mortgage would suit me best?**

How much deposit will I need? What are my monthly repayments going to be?

To answer these and other mortgage related questions contact our mortgage advisor on 028 9047 1515.

Your home may be repossessed if you do not keep up repayments on your mortgage.

We DO NOT charge for initial mortgage consultations. We may charge a fee on completion depending on circumstances. Our typical fee is £250, however, please confirm with Mortgage Consultant at time of appointment.

Please note that we have not tested the services or systems in this property. Purchasers should make/commission their own inspections if they feel it is necessary.

ULSTERPROPERTYSALES.CO.UK

ANDERSONSTOWN
028 9060 5200

BALLYHACKAMORE
028 9047 1515

BALLYNAHINCH
028 9756 1155

BANGOR
028 9127 1185

CARRICKFERGUS
028 9336 5986

CAVEHILL
028 9072 9270

DONAGHADEE
028 9188 8000

DOWNPATRICK
028 4461 4101

FORESTSIDE
028 9064 1264

GLENGORMLEY
028 9083 3295

MALONE
028 9066 1929

NEWTOWNARDS
028 9181 1444

RENTAL DIVISION
028 9070 1000



CWS Properties Ltd; Trading under licence as Ulster Property Sales (Ballyhackamore) Reg. No. NI616437;
Registered Office: 324 Upper Newtownards Road, Belfast BT4 3EX
©Ulster Property Sales is a Registered Trademark