




23 Glenburn Park , Belfast, BT14 6TF

Offers Over £375,000

Stunning Refurbished And Re-Modelled Luxury Double Fronted Semi Detached Family Home.

Stunning double fronted semi detached residence which has been refurbished and modernised to the highest standard in recent years overflowing with luxury features within this beautiful tree lined Avenue. The generously proportioned interior comprises 4 bedrooms, master bedroom with en-suite, 2 + reception rooms, two into bay, luxury fitted kitchen with dining area and modern white bathroom suite complete with separate shower cubicle and freestanding bath. The dwelling further offers downstairs furnished cloakroom, extensive utility room, gas central heating, recently installed uPvc double glazed windows, extensive use of ceramic and wood laminate floor coverings and has undergone comprehensive refurbishment works in recent years. Mature hard landscaped side and rear with ample carparking combines with this most sought after location with many excellent amenities within walking distance makes this the perfect family home - Early Viewing is strongly recommended.

Energy Efficiency Rating		
Very energy efficient - lower running costs	Current	Potential
(92 plus) A		
(81-91) B		
(69-80) C		
(55-68) D		
(39-54) E		
(21-38) F		
(1-20) G		
Not energy efficient - higher running costs		
Northern Ireland	56	72
EU Directive 2002/91/EC		

23 Glenburn Park

, Belfast, BT14 6TF



- Stunning Double Fronted Red Brick Semi Detached Villa
- 4 Bedrooms 2+ Reception Rooms
- Master Bedroom With En-Suite
- Luxury Fitted Kitchen With Dining
- Deluxe White Bathroom Suite
- Gas Central Heating
- Upvc Double Glazed Windows
- Furnished Cloakroom Utility Room
- Private Hard Landscaped Gardens
- Sought After Tree Lined Avenue

Entrance Porch
Upvc double glazed entrance door, Lvf flooring.

Entrance Hall
Vestibule door, wood laminate floor, panelled radiator.

Furnished Cloakroom
White suite comprising wash hand basin, low flush wc, ceramic tiled floor, partially tiled floor..

Lounge
15'5" x 10'11" into (4.71 x 3.34 into)
Attractive fireplace with tiled inset, picture rail, corniced ceiling, wood laminate floor, double panelled radiator.

Living Room
17'5" x 12'0" into bay (5.31 x 3.68 into bay)
Attractive fireplace with tiled inset, picture rail, corniced ceiling, double panelled radiator.

Open plan to:

Kitchen
Single drainer stainless steel sink unit, extensive range of high and low level units, woodblock worktops, built-in ceramic hob, steel under oven, stainless steel canopy extractor fan, integrated dish washer, fridge freezer space, ceramic tiled floor, partially tiled walls, panelled radiator.

Snug
11'5" x 10'6" (3.49 x 3.22)
Attractive fireplace with tiled inset, built-in storage, double panelled radiator.

Utility
16'11" x 8'7" at widest (5.17 x 2.64 at widest)
Range of low level units, wood block worktops, plumbed for washing machine, fridge freezer space, concealed gas boiler, pvc door to rear, pvc door to side, ceramic tiled floor, partially tiled floor.

First Floor
Landing. access to roofspace.

Bathroom
Deluxe white suite comprising free standing bath, pedestal wash hand basin, low flush wc, fully tiled shower cubicle, drench style thermostatically controlled shower, telephone handset shower, partly tiled walls, 1/4 panelled walls, ceramic tiled floor, chrome radiator.

Bedroom
11'3" x 11'3" (3.43 x 3.45)
Cornice ceiling, panelled radiator.

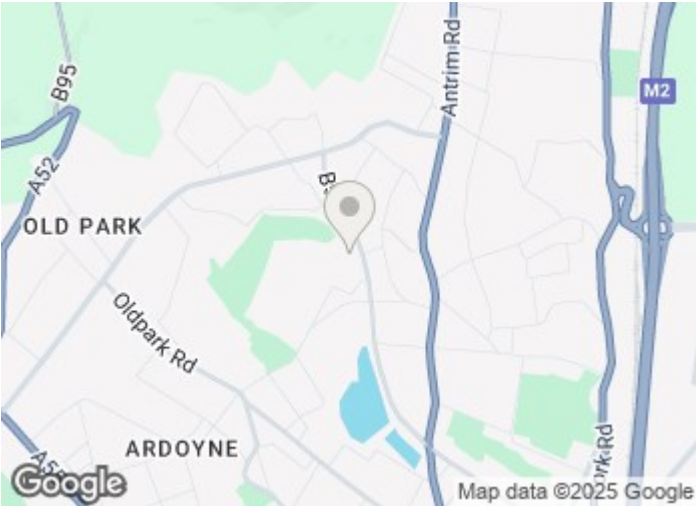
Bedroom
11'11" x 12'10" (3.65 x 3.92)
Double panelled radiator.

Bedroom
12'8" x 12'1" (3.87 x 3.69)
Panelled radiator.

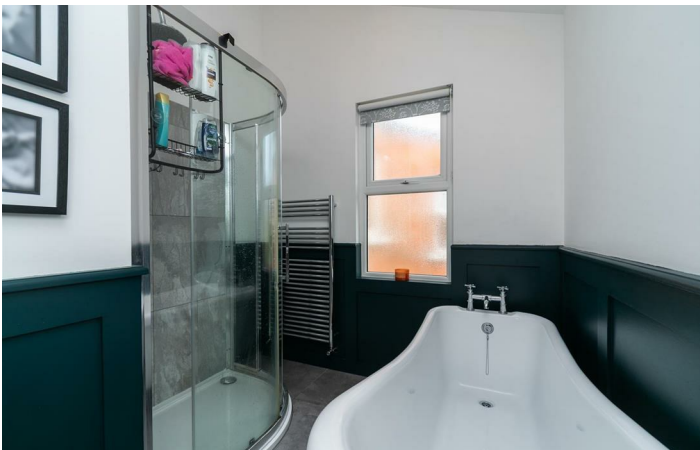
Bedroom
17'5" x 12'2" into bay (5.31 x 3.72 into bay)
Picture rail, corniced ceiling, shelving, double panelled radiator.

En-Suite
White suite comprising wash hand basin, low flush wc, fully tiled shower cubicle, thermostatically controlled telephone handset shower, ceramic tiled floor, partially tiled walls, chrome radiator.

Outside
Front garden in mature lawn and hedging, Ample driveway parking via ornate entrance gates. Hard landscaped side and rear garden in stones and timber decking, outside light and tap.



Directions



Floor Plan

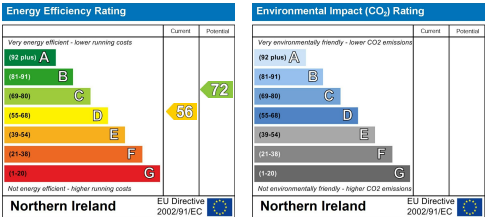


23 Glenburn Park, BELFAST, BT14 6TF



Total Area: 149.6 m² ... 1610 ft²
All measurements are approximate and for display purposes only

These particulars, whilst believed to be accurate are set out as a general outline only for guidance and do not constitute any part of an offer or contract. Intending purchasers should not rely on them as statements of representation of fact, but must satisfy themselves by inspection or otherwise as to their accuracy. No person in this firms employment has the authority to make or give any representation or warranty in respect of the property.



ULSTERPROPERTYSALES.CO.UK

ANDERSONSTOWN
028 9060 5200

BALLYHACKAMORE
028 9047 1515

BALLYNAHINCH
028 9756 1155

BANGOR
028 9127 1185

CARRICKFERGUS
028 9336 5986

CAVEHILL
028 9072 9270

DOWNPATRICK
028 4461 4101

FORESTSIDE
028 9064 1264

GLENGORMLEY
028 9083 3295

MALONE
028 9066 1929

NEWTOWNARDS
028 9181 1444

RENTAL DIVISION
028 9070 1000



John McLarnon trading under licence as Ulster Property Sales (Cavehill)
©Ulster Property Sales is a Registered Trademark