

15 Springvale Gardens , Belfast, BT14 8BZ

Offers Over £149,950

Superb Refurbished Red Brick Semi Detached Villa With Delightful Gardens.

A superb refurbished red brick semi detached villa holding a prime position within this most convenient and popular location offering the perfect family sized accommodation. The spacious interior comprises 3 bedrooms, through lounge with pvc doors to rear, recently fitted luxury integrated kitchen and white fully tiled bathroom suite. The dwelling further offers uPvc double glazed windows, gas heating and extensive use of wood laminate and ceramic floor coverings throughout. Delightful hard landscaped gardens with extensive raised patio with mature lawn and excellent basement storage combines with the most convenient location with excellent shopping, public transport and schools all close to hand - Early Viewing is highly recommended for this superb family home.

Energy Efficiency Rating		
	Current	Potential
Very energy efficient - lower running costs		
(92 plus) A		
(81-91) B		
(69-80) C		
(55-68) D		
(39-54) E		
(21-38) F		
(1-20) G		
Not energy efficient - higher running costs		
Northern Ireland		EU Directive 2002/91/EC

15 Springvale Gardens

, Belfast, BT14 8BZ



3



1



1



- Superb Refurbished Semi Detached Villa
- White Fully Tiled Bathroom Suite
- Hard Landscaped Gardens
- Fantastic Family Home
- 3 Bedrooms 1 Reception
- Upvc Double Glazed Windows
- Feature Raised Patio Excellent Storage
- Recently Fitted Luxury Kitchen
- Gas Central Heating
- Most Convenient Location

Entrance Hall

uPvc double glazed entrance door, wood laminate floor, double panelled radiator.

Through Lounge

23'4" x 11'3" (7.13 x 3.45)

Attractive fireplace, electric inset, wood laminate floor, pvc double doors to rear, double panelled radiator x 2.

Kitchen

13'2" x 7'1" (4.02 x 2.18)

Single stainless steel sink unit, extensive range of high and low level units, tall larder, formica worktops, 4 ring gas hobs, glass splash back, steel under oven,

integrated fridge freezer, dish washer, plumbed for washing machine, stainless steel canopy extractor, partly tiled walls, wood laminate flooring, recessed lighting, panelled radiator, uPvc double glazed rear door.

First Floor

Landing, access to roospace, leaded light.

Bedroom

11'7" x 8'8" (3.55 x 2.65)

Extensive range of mirrored slide robes, panelled radiator.

Bedroom

10'4" x 9'10" (3.15 x 3.02)

Built in storage, recessed lighting, double panelled radiator.

Bedroom

8'1" x 7'5" (2.48 x 2.28)

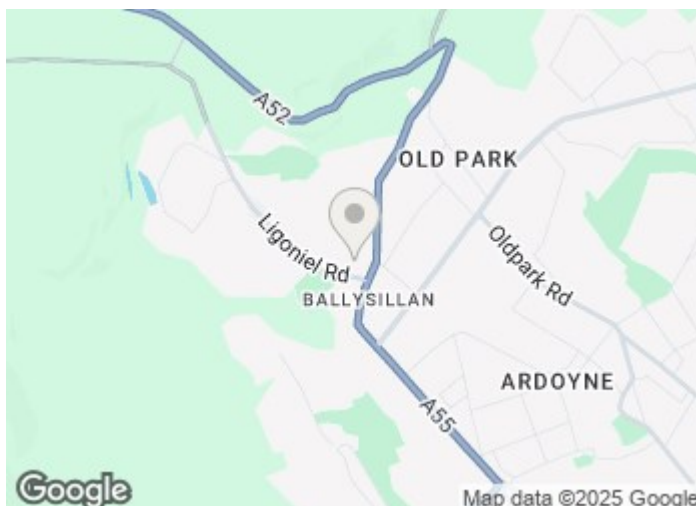
Built-in robe, concealed gas boiler, panelled radiator

Bathroom

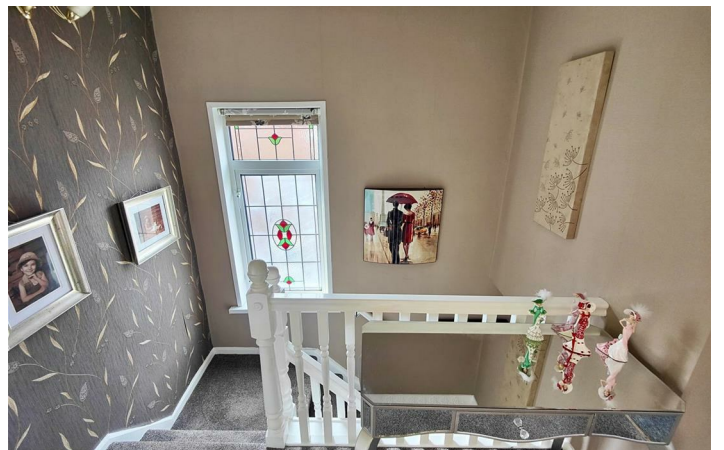
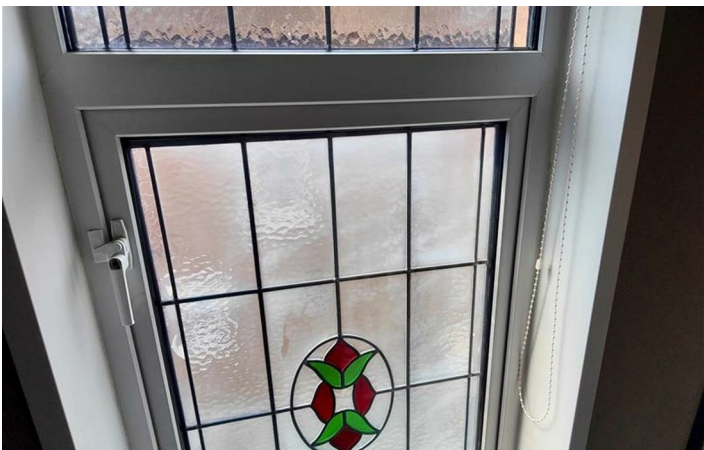
Fully tiled white suite comprising panelled bath, shower screen, electric shower, vanity unit, low flush wc, fully tiled walls, ceramic tiled floor, panelled radiator.

Outside

Landscaped gardens to front in mature lawn and shrubs. Rear with feature raised patio in concrete pavers steps to mature lawn, Basement storage, outside tap. Driveway parking.



Directions



Floor Plan

These particulars, whilst believed to be accurate are set out as a general outline only for guidance and do not constitute any part of an offer or contract. Intending purchasers should not rely on them as statements of representation of fact, but must satisfy themselves by inspection or otherwise as to their accuracy. No person in this firms employment has the authority to make or give any representation or warranty in respect of the property.

