

23 Ainsworth Drive , Belfast, BT13 3EJ

Extended Town Terrace In the Most Convenient Location.

A superb opportunity to purchase a red brick period mid terrace property within this ever popular and most convenient location. The spacious interior comprises 2 bedrooms, through lounge, fitted kitchen and extended bathroom in cream suite. The dwelling further offers oil fired central heating, uPvc double glazed windows. Ideally suited to the first time buyer or investor alike within this most convenient location with low outgoings this is an opportunity not to be missed.

**Offers In The Region Of
£75,000**

Energy Efficiency Rating		
	Current	Potential
Very energy efficient - lower running costs		
(92 plus) A		
(81-91) B		
(69-80) C		
(55-68) D		
(39-54) E		
(21-38) F		
(1-20) G		
Not energy efficient - higher running costs		
Northern Ireland		EU Directive 2002/91/EC

23 Ainsworth Drive

, Belfast, BT13 3EJ



- Extended Town Terrace
- Fitted Kitchen
- Upvc Double Glazed Windows
- 2 Bedrooms
- Classic Cream Bathroom Suite
- Convenient Location
- Through Lounge
- Oil Heating

Entrance Hall

Hardwood entrance door.

Lounge

14'3" x 9'5" (4.35 x 2.89)

Attractive fireplace, wood laminate floor, double panelled radiator, understairs storage.

Kitchen

12'4" x 7'9" (3.78 x 2.38)

Single drainer stainless steel sink unit, range of high and low level units, formica worktops, cooker space, fridge/freezer space, plumbed for washing machine, partly tiled walls and ceramic tiled floor.

Rear Lobby

Ceramic tiled floor, hardwood rear door.

Bathroom

Classic white suite comprising panelled bath, telephone handshower, pedestal wash hand basin, low flush wc, panelled radiator, partly tiled walls, ceramic tiled floor.

First Floor

Bedroom

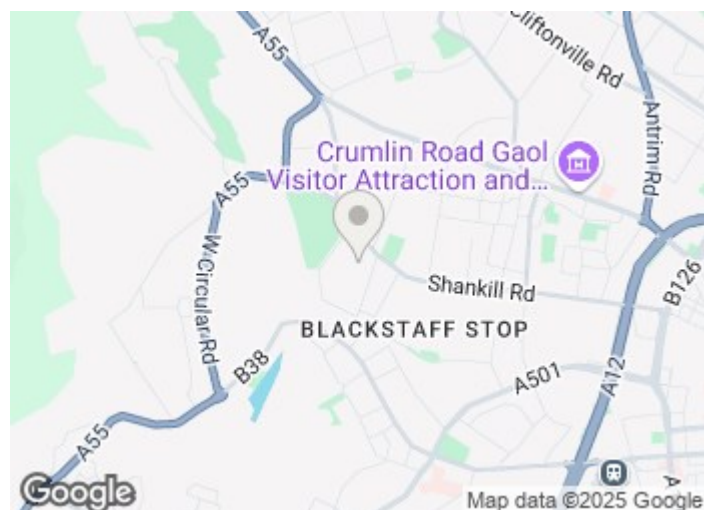
12'4" x 11'7" (3.76 x 3.55)

Panelled radiator, built-in storage.

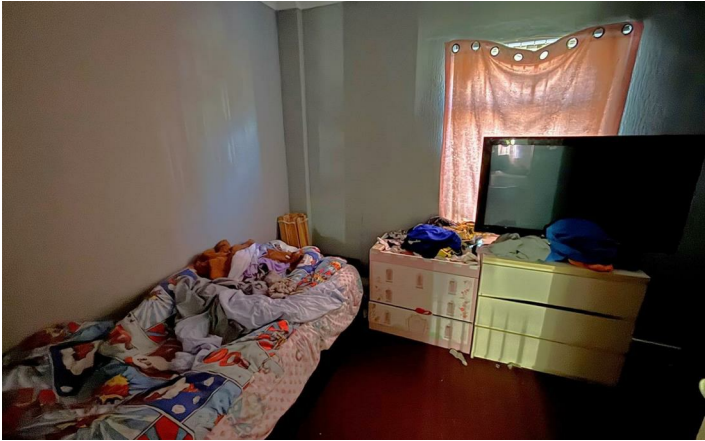
Bedroom

12'2" x 11'1" (3.72 x 3.38)

Panelled radiator.



Directions



Floor Plan

These particulars, whilst believed to be accurate are set out as a general outline only for guidance and do not constitute any part of an offer or contract. Intending purchasers should not rely on them as statements of representation of fact, but must satisfy themselves by inspection or otherwise as to their accuracy. No person in this firms employment has the authority to make or give any representation or warranty in respect of the property.

