

16 Dhu Varren Crescent Woodvale, Belfast, BT13 3FL

Double Extended Semi Detached Villa Set Within This Ever Popular Location

A fabulous opportunity to purchase a double extended red brick semi detached villa holding a prime position within this ever popular residential location. The extended interior comprises 3 bedrooms, lounge with double doors to dining area with extended fitted kitchen incorporating built-in high level oven and ceramic hob with extended bathroom in white suite. The dwelling further offers open entrance porch, pvc fascia and eaves, oil fired central heating, uPvc double glazed windows and built-in mirrored slide robes.

Conveniently positioned to the many excellent amenities offered by the Woodvale Road with excellent links to the City this is a home which offers superb potential.

**Offers In The Region Of
£79,950**

Energy Efficiency Rating		
Very energy efficient - lower running costs	Current	Potential
(92 plus) A		
(81-91) B		
(69-80) C		
(55-68) D		
(39-54) E		
(21-38) F		
(1-20) G		
Not energy efficient - higher running costs		
Northern Ireland		
EU Directive 2002/91/EC		

16 Dhu Varren Crescent

Woodvale, Belfast, BT13 3FL



- Double Width Extended SDV
- 3 Bedrooms
- 1 + Reception Room
- Extended Fitted Kitchen
- Extended Bathroom in White Suite
- Pvc Fascia & Eaves
- uPvc Double Glazed Windows
- Oil Fired Central Heating
- Ever Popular Location

Entrance Hall

Open entrance porch, uPvc double glazed entrance door.

Lounge

11'10" x 14'7" (3.62 x 4.47)
Panelled radiator.

Double Dividing Doors:

Extended Kitchen

14'2" x 7'4" (4.33 x 2.26)
Bowl and a half coloured sink unit, extensive range of high and low level units, formica worktops, built-in high level oven, fridge/freezer space,

ceramic hob, extractor fan, plumbed for washing machine, partly tiled walls.

Dining Area

Rear Lobby

Double panelled radiator.

Extended Bathroom

White suite comprising shower cubicle, electric shower, pedestal wash hand basin, low flush wc, fully tiled walls, double panelled radiator, hot press/copper cylinder.

First Floor

Landing.

Bedroom

11'1" x 9'1" (3.38 x 2.79)
Built-in mirrored slide robes, panelled radiator.

Bedroom

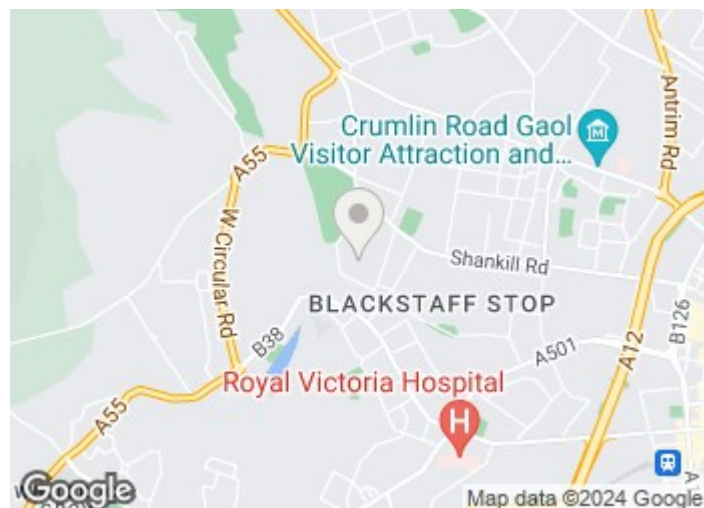
11'3" x 6'7" (3.45 x 2.02)
Panelled radiator, quarter panelled walls, wood strip floor.

Bedroom

8'1" x 7'3" (2.47 x 2.21)
Panelled radiator.

Outside

Forecourt, enclosed rear yard, oil tank, oil fired central heating boiler, outside tap.



Directions



**Ulster Mortgage
Group**
Help. We Listen

EMMA MCGARR
Mortgage and Protection

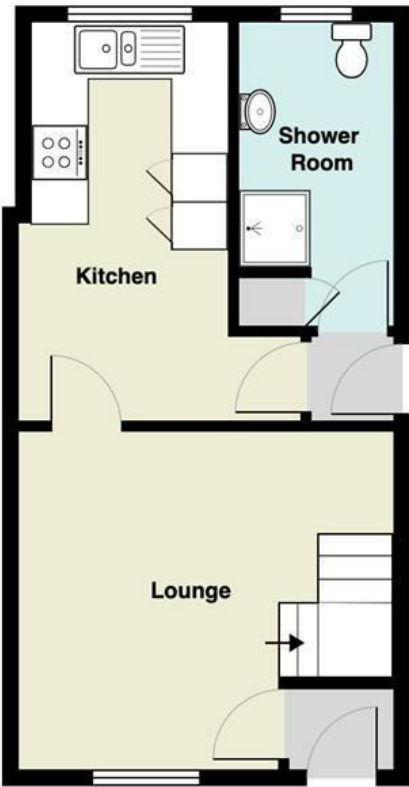
Direct dial number
028 9083 0550 (option 1)

Cavehill Main Number
028 9072 9270

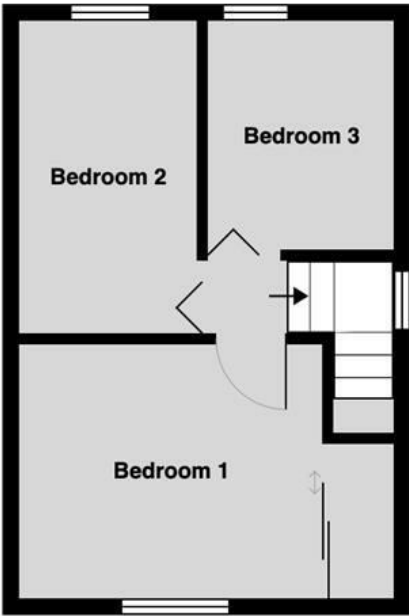
cavehill@ulsterproperty.ie

Floor Plan

16, Dhu Varren Crescent, BELFAST, BT13 3FL



Ground Floor

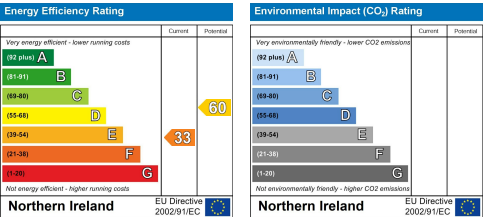


First Floor

Total Area: 57.1 m² ... 614 ft²

All measurements are approximate and for display purposes only

These particulars, whilst believed to be accurate are set out as a general outline only for guidance and do not constitute any part of an offer or contract. Intending purchasers should not rely on them as statements of representation of fact, but must satisfy themselves by inspection or otherwise as to their accuracy. No person in this firms employment has the authority to make or give any representation or warranty in respect of the property.



ULSTERPROPERTYSALES.CO.UK

- ANDERSONSTOWN
028 9060 5200
- BALLYHACKAMORE
028 9047 1515
- BALLYMENA
028 2565 7700
- BALLYNAHINCH
028 9756 1155
- BANGOR
028 9127 1185
- CARRICKFERGUS
028 9336 5986
- CAUSEWAY COAST
0800 644 4432
- CAVEHILL
028 9072 9270
- DOWNPATRICK
028 4461 4101
- FORESTSIDE
028 9064 1264
- GLENGORMLEY
028 9083 3295
- MALONE
028 9066 1929
- NEWTOWNARDS
028 9181 1444
- RENTAL DIVISION
028 9070 1000



John McLarnon trading under licence as Ulster Property Sales (Cavehill)
©Ulster Property Sales is a Registered Trademark