

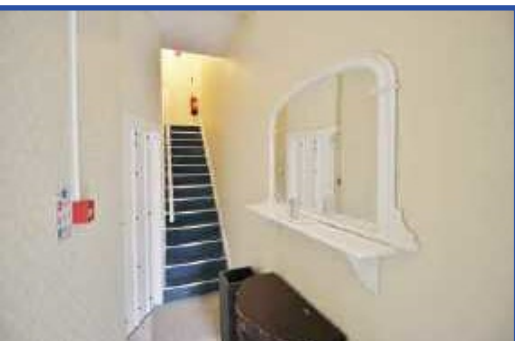


25 Brookhill Avenue, Belfast

Offers In The Region Of £170,000

Period Town Terrace Separated Into Three Self Contained Apartments.

Situated within this most vibrant section of Brookhill Avenue, conveniently location just moments away from the bustling Antrim Road within view of the Queen Mary Gardens and sports grounds. The property has been converted into 3 self contained apartments with HMO approval comprising apt 1 ground floor 1 bedroom, apt 2 first floor 2 bedrooms and apt 3 2nd floor 2 bedrooms. Currently the property is generating Circa £1200 per calender month.



Apartment 1 -Ground Floor

Living Room 3.57 x 4.92 (11'9" x 16'2")

Into bay, panelled radiator.



Bedroom

Panelled radiator.

Kitchen 4.50 x 2.40 (14'9" x 7'10")

Stainless steel sink unit, range of high and low level units, formica worktops, plumbed for washing machine, fridge/freezer space, ceramic tiled floor.



Bathroom

White suite comprising panelled bath, telephone hand shower, pedestal wash hand basin, low flush wc, wood laminate floor.



First Floor

Living Room 2.91 x 4.98 (9'7" x 16'4")

Into bay

Bedroom 4.07 x 1.85 (13'4" x 6'1")

Bedroom 1.95 x 3.45 (6'5" x 11'4")

Kitchen 2.98 x 2.40 (9'9" x 7'10")

Stainless steel sink unit, high and low level units, formica worktops, fridge/freezer space, plumbed for washing machine.

Bathroom

White suite comprising panelled bath, telephone hand shower, pedestal wash hand basin, low flush wc.

Second Floor

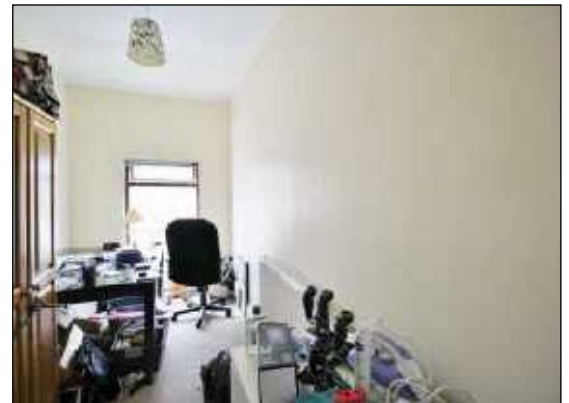
Living Room 4.11 x 2.82 (13'6" x 9'3")

Wood laminate floor.



Bedroom 4.11 x 1.82 (13'6" x 6'0")

Single panelled radiator,



Bedroom 2.48 x 2.82 (8'2" x 9'3")

Double panelled radiator, built-in cupboard.



Kitchen 2.42 x 2.94 (7'11" x 9'8")

Stainless steel single drainer sink unit, range of high and low level units, formica worktops, fridge/freezer space, plumbed for washing machine, double panelled radiator.



Bathroom

White suite comprising panelled bath, telephone hand shower, pedestal wash hand basin, low flush wc.

