

123 Deerpark Road , Belfast, BT14 7PX

Offers Over £135,000

Attractive Red Brick Semi Detached Villa Holding An Excellent Site Within This Most Popular Location.

Holding an excellent site this attractive red brick semi detached villa will have immediate appeal. The interior comprises 3 bedrooms, lounge, fitted kitchen with dining area, utility room and modern white bathroom. The dwelling further offers gas fired central heating, uPvc double glazed windows and offers the new owners an opportunity to put their own cosmetic stamp on this attractive family home. Off street parking and private gardens combines with this most popular and convenient location with excellent local shopping, schools and public transport only a short walk away and Belfast City Centre a simple commute - Early Viewing is highly recommended.

Energy Efficiency Rating		
Very energy efficient - lower running costs	Current	Potential
(92 plus) A		
(81-91) B		
(69-80) C		
(55-68) D		
(39-54) E		
(21-38) F		
(1-20) G		
Not energy efficient - higher running costs		
Northern Ireland	64	74
		EU Directive 2002/91/EC

123 Deerpark Road , Belfast, BT14 7PX



- Attractive Red Brick Semi Detached Villa
- Utility Room
- Upvc Double Glazed Windows
- 3 Bedrooms Lounge
- White Bathroom Suite
- Mature Gardens
- Modern Fitted Kitchen
- Gas Fired Central Heating
- Most Popular Location

Entrance Hall

Hardwood entrance door, understairs cloaks, double panelled radiator.

Lounge

12'11" x 10'9" into bay (3.94 x 3.28 into bay)

Attractive fireplace with tiled inset, wood laminate floor, double panelled radiator.

Kitchen

10'0" x 8'5" (3.05 x 2.57)

Single drainer stainless steel sink unit, range of high and low level units, cooker space, fridge freezer space, Lvf flooring, panelled

radiator.

Dining Area:

Utility Room

6'7" x 5'6" (2.01 x 1.68)

Stainless steel sink unit, range of low level units, Lvf flooring, fromica worktops, plumbed for washing machine.

First Floor

Landing, access to roofspace.

Bedroom

10'0" x 9'10" (3.07 x 3.02)

Panelled radiator.

Bedroom

10'0" x 9'10" (3.07 x 3.01)

Panelled radiator.

Bedroom

6'9" x 6'5" (2.06 x 1.98)

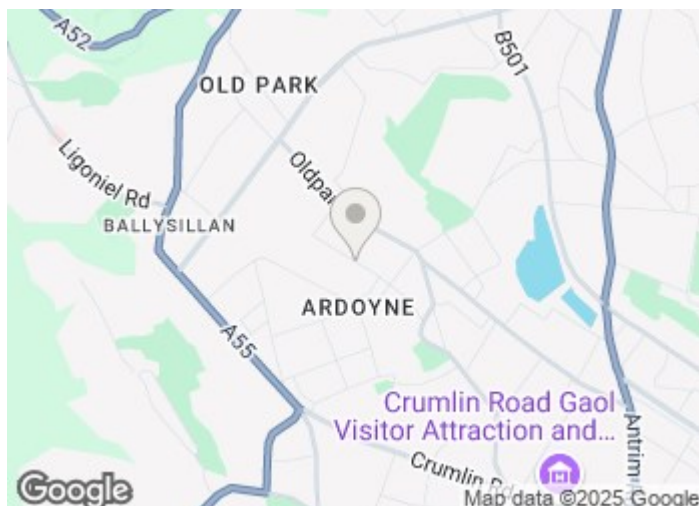
Panelled radiator.

Bathroom

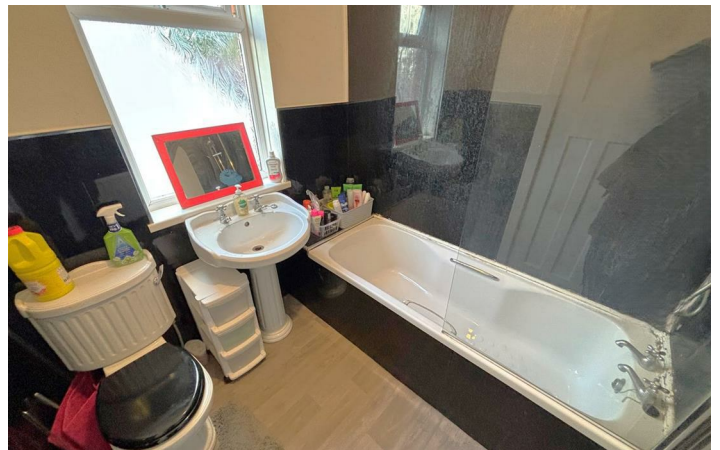
White bathroom suite comprising panelled bath, shower screen, telephone handset shower, pedestal wash hand basin, low flush wc, panelled radiator.

Outside

Gardens front and rear in mature lawn, shrubs and flowerbeds, Driveway parking, outside light and tap.



Directions



Floor Plan

These particulars, whilst believed to be accurate are set out as a general outline only for guidance and do not constitute any part of an offer or contract. Intending purchasers should not rely on them as statements of representation of fact, but must satisfy themselves by inspection or otherwise as to their accuracy. No person in this firms employment has the authority to make or give any representation or warranty in respect of the property.

