



35 Ava Street, Ormeau Road, Belfast, BT7 3BS

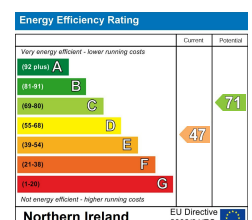
Asking Price £174,950

Ava Street is a quiet residential area located just off the highly sought after Upper Ormeau road. With an enviable selection of shops, cafés, parks, bars and restaurants, you can be sure that you are never far from the action!

The property itself is a beautifully presented red brick, mid-terrace home comprising of three bedroom, spacious open plan lounge / dining area, modern fitted kitchen and white shower suite on the first floor. The property also benefits from gas fired central heating, upvc double glazing and enclosed yards to the front and rear of the property.

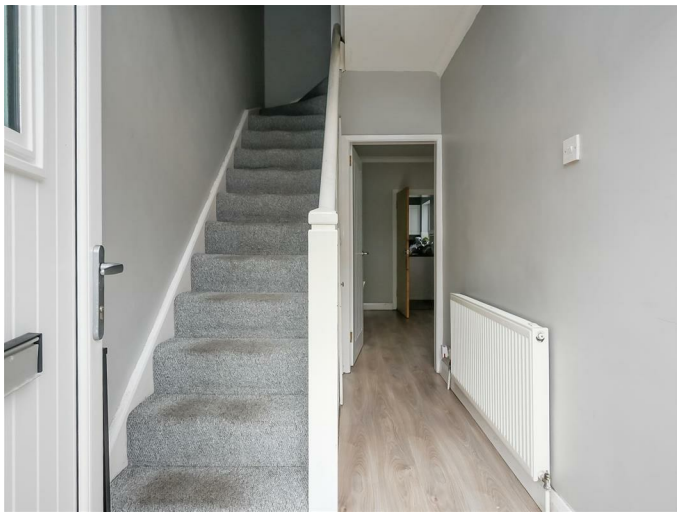
A chain free sale, this property will make a fantastic purchase for anyone looking to buy in one of Belfast's most vibrant areas. With demand continuing to outweigh supply, we don't anticipate this one sitting around for long so would recommend arranging a viewing at your earliest opportunity.

- Beautifully Presented Red Brick Mid-Terrace Home
- Spacious Open Plan Lounge / Dining Area
- White Shower Suite
- Upvc Double Glazing
- Highly Sought after Location just off Ormeau Road
- Three Bedrooms
- Modern Fitted Kitchen
- Gas Fired Central Heating
- Enclosed Yard to Front and Rear
- Chain Free Sale

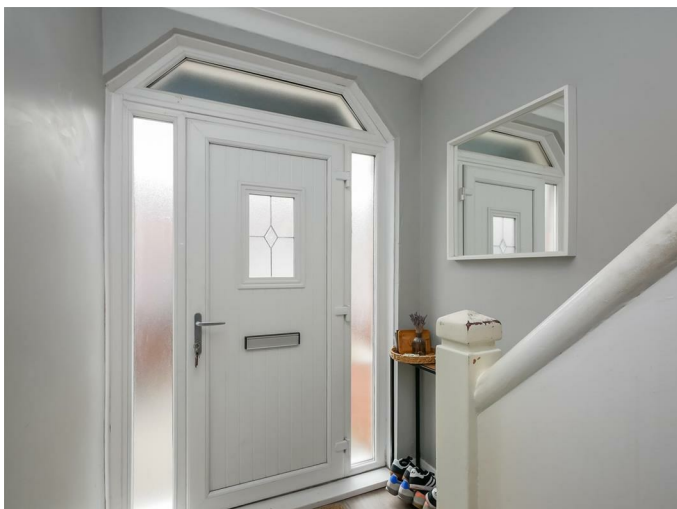




Entrance Hall 10'7" x 5'6" (3.25m x 1.70m)



Glazed upvc front door and surround opens onto entrance hall with laminate flooring and under stair storage.



Open Plan Lounge / Dining Area



Spacious open plan lounge / dining area with laminate flooring and built-in storage cupboard.



Lounge 10'3" x 9'3" (3.14m x 2.84)





Dining Area 15'4" x 10'2" (4.68m x 3.10m)



Modern Fitted Kitchen 8'8" x 8'0" (2.65m x 2.46m)



Modern fitted kitchen with a selection of upper and lower level units complete with wooden effect formica worktops, stainless steel sink with drainer, integrated electric oven with gas hob and overhead extractor fan. Plumbed for washing machine. Part tiled walls and tiled flooring.



First Floor

Bedroom 1 10'3" x 8'8" (3.14m x 2.66m)



Built-in storage



Bedroom 2 10'3" x 8'8" (3.14m x 2.66m)



Built-in storage.

Bedroom 3 6'2" x 5'11" (1.89m x 1.81m)



White Shower Suite 6'9" x 6'2" (2.07m x 1.89m)



White shower suite comprising of low flush w.c, wash hand basin with vanity, heated

chrome towel rail and corner shower cubicle with electric triton shower and upvc wall panelling. Built-in storage cupboard housing gas boiler. Tiled flooring

Property Front



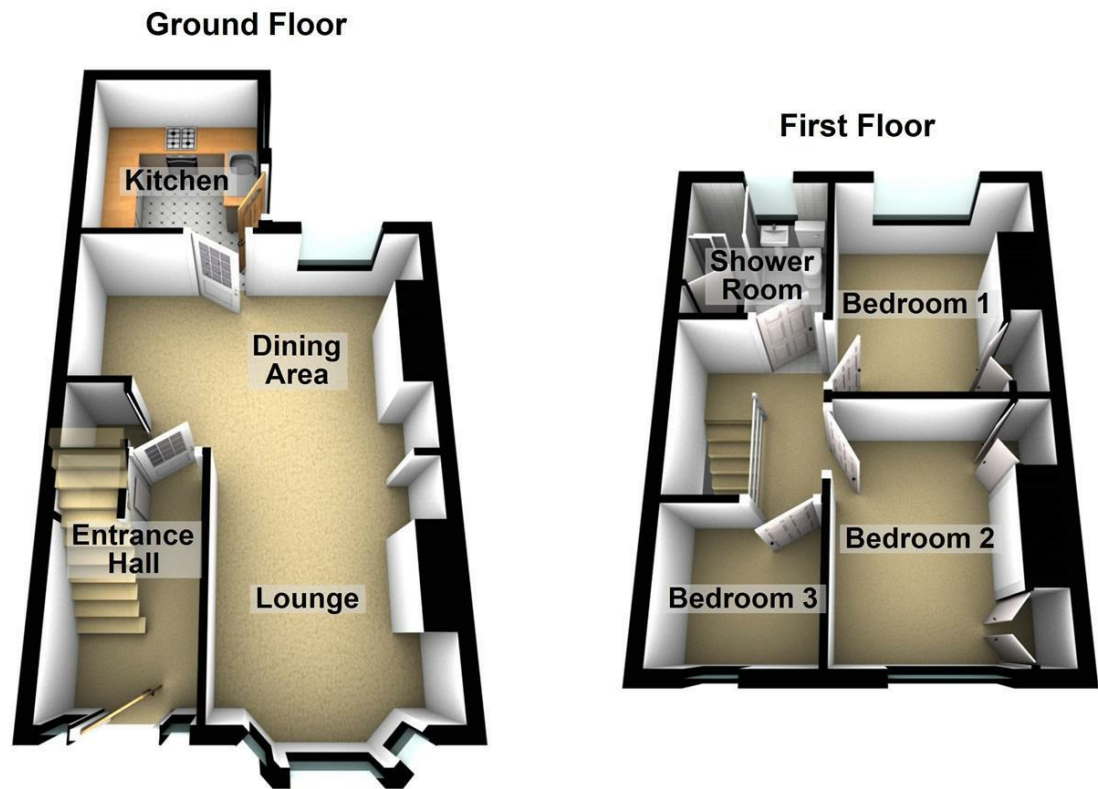
Enclosed yard to front bordered by red brick wall.

Enclosed Rear Yard

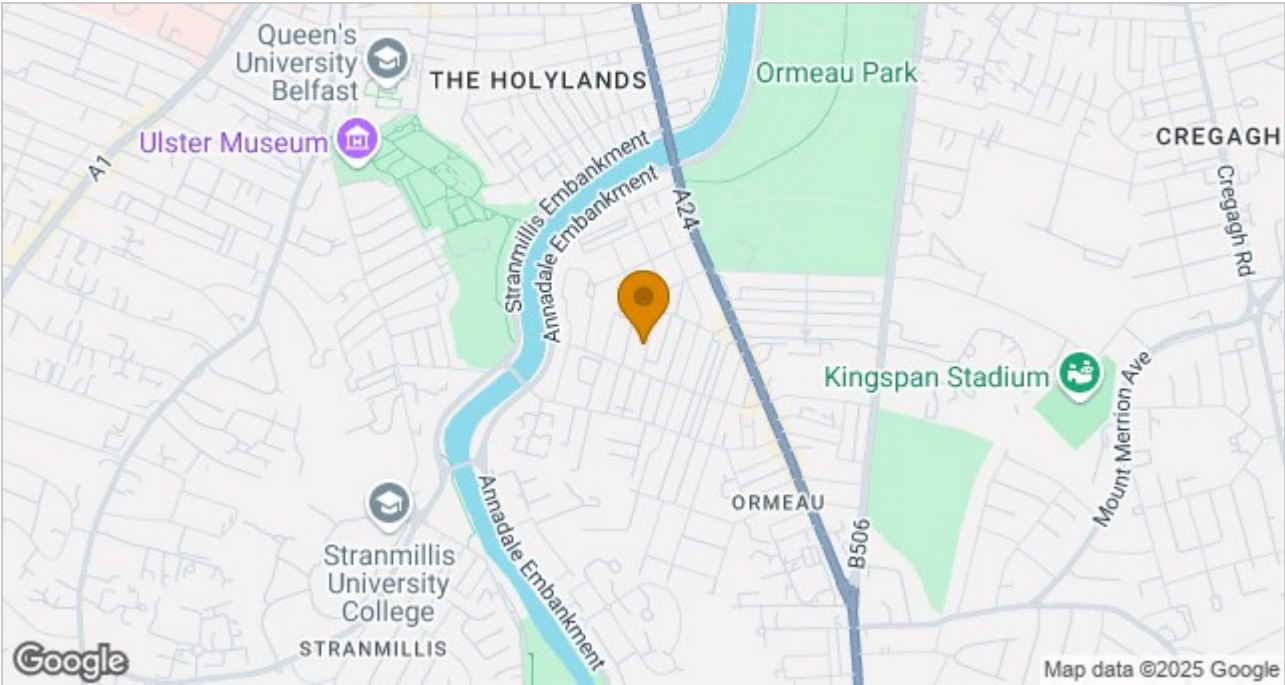


Low maintenance enclosed rear yard with westerly aspect that captures the afternoon and evening sun.

Floor Plan



Area Map



These particulars, whilst believed to be accurate are set out as a general outline only for guidance and do not constitute any part of an offer or contract. Intending purchasers should not rely on them as statements of representation of fact, but must satisfy themselves by inspection or otherwise as to their accuracy. No person in this firms employment has the authority to make or give any representation or warranty in respect of the property.

ULSTERPROPERTYSALES.CO.UK

ANDERSONSTOWN
028 9060 5200

BALLYHACKAMORE
028 9047 1515

BALLYNAHINCH
028 9756 1155

BANGOR
028 9127 1185

CARRICKFERGUS
028 9336 5986

CAVEHILL
028 9072 9270

DONAGHADEE
028 9188 8000

DOWNPATRICK
028 4461 4101

FORESTSIDE
028 9064 1264

GLENGORMLEY
028 9083 3295

MALONE
028 9066 1929

NEWTOWNARDS
028 9181 1444

RENTAL DIVISION
028 9070 1000



John Thompson trading under licence as Ulster Property Sales (Downpatrick)
©Ulster Property Sales is a Registered Trademark