



## 110 Middle Road, Saintfield, BT24 7LR

**Asking Price £159,950**

Situated a few minutes drive from the centre of Saintfield, this semi detached bungalow benefits from a rural setting with the convenience of the shops, cafes and facilities that Saintfield has to offer.

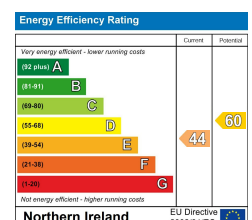
The Internal accommodation comprises three bedrooms, one reception room, fitted kitchen with casual dining area and white shower suite

In addition the property benefits from an oil heating system and double glazing.

Outside there is a driveway that leads around to the rear of the property providing enough space to park and turn, a few steps lead up to a large garden laid in lawns.

An excellent property with great potential.

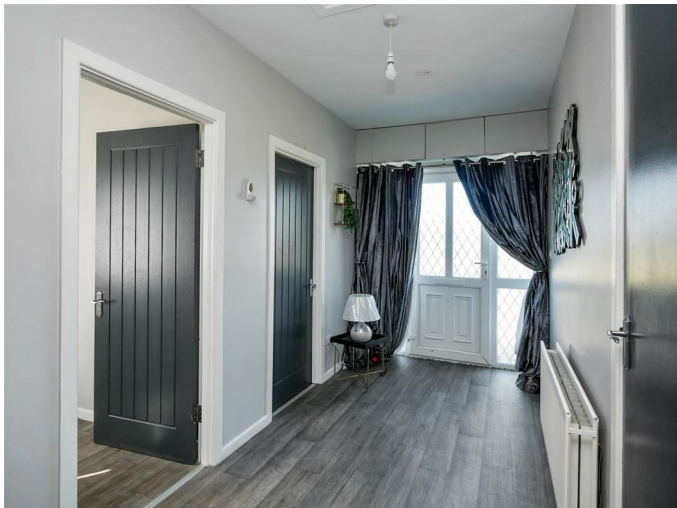
- Semi Detached Bungalow
- One Reception Room
- White Shower Suite
- Double Glazed
- Large Loose Stone Area To Rear With Space To Park & Turn
- Three Bedrooms
- Fitted Kitchen With Casual Dining Area
- Oil Heating
- Driveway With Parking
- Large Enclosed Garden Area



## Entrance



Pvc glass panelled front door with glazed side panels to entrance hall.



## Lounge 14'5 x 10'2 (4.39m x 3.10m)



Stone fire-place housing an open fire.





Fitted Kitchen 13'7 x 10'4 (4.14m x 3.15m)



Full range of high and low level units, Formica work surfaces, single drainer sink unit with mixer taps, plumbed for washing machine. Part tiled walls.



**Bedroom One 11'9 x 7'9 (3.58m x 2.36m)**



**Bedroom Two 12'0 x 7'0 (3.66m x 2.13m)**



**Bedroom Three 12'0 x 6'3 (3.66m x 1.91m)**



### White Shower Suite



White shower suits comprising walk in shower cubicle, pedestal wash hand basin with storage below, low flush w.c  
Part tiled walls.

### Outside



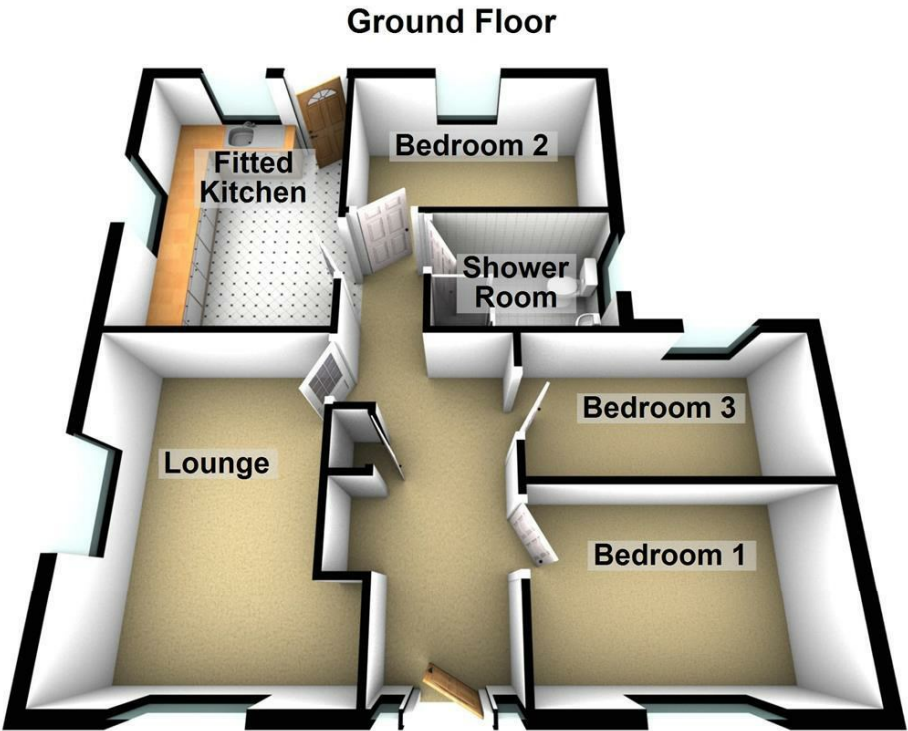
Loose stone driveway with ample parking with space to turn behind the property. Large garden laid in lawns to rear.







Floor Plan



Area Map



These particulars, whilst believed to be accurate are set out as a general outline only for guidance and do not constitute any part of an offer or contract. Intending purchasers should not rely on them as statements of representation of fact, but must satisfy themselves by inspection or otherwise as to their accuracy. No person in this firms employment has the authority to make or give any representation or warranty in respect of the property.

ULSTERPROPERTYSALES.CO.UK

**ANDERSONSTOWN**  
028 9060 5200  
**BALLYHACKAMORE**  
028 9047 1515  
**BALLYNAHINCH**  
028 9756 1155

**BANGOR**  
028 9127 1185  
**CARRICKFERGUS**  
028 9336 5986  
**CAVEHILL**  
028 9072 9270

**DONAGHADEE**  
028 9188 8000  
**DOWNPATRICK**  
028 4461 4101  
**FORESTSIDE**  
028 9064 1264

**GLENGORMLEY**  
028 9083 3295  
**MALONE**  
028 9066 1929  
**NEWTOWNARDS**  
028 9181 1444

**RENTAL DIVISION**  
028 9070 1000



Forestsides Estates Ltd; Trading under licence as Ulster Property Sales (Forestsides) Reg. No. NI051121;  
Registered Office: 9 Upper Crescent, Belfast BT7 1NT  
©Ulster Property Sales is a Registered Trademark