

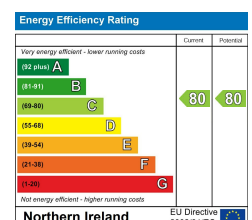


## Apt 807 College Central, 4 College Avenue, Belfast, BT1 6BD

**Price Guide £145,000**

This modern eighth floor apartment offers city centre living complete with a range of modern conveniences. Bright and spacious throughout the property comprises modern kitchen, open plan living/dining room, two double bedrooms ( master with en-suite ) and luxury bathroom suite. Further benefits include stunning views over the city centre, gas fired central heating and double glazed windows. Within minutes walk of the city centre shops, bars and restaurants this would be an ideal base for any professional or investor alike. Viewing is highly recommended.

- Luxury Two Bedroom Apartment
- Open Plan Living / Dining Area
- Contemporary Bathroom Suite
- Prime City Centre Location
- Modern Kitchen
- Two Good Sized Bedrooms ( Master With En-suite )
- Gas Heating / Pvc Double Glazed Windows
- EPC C80





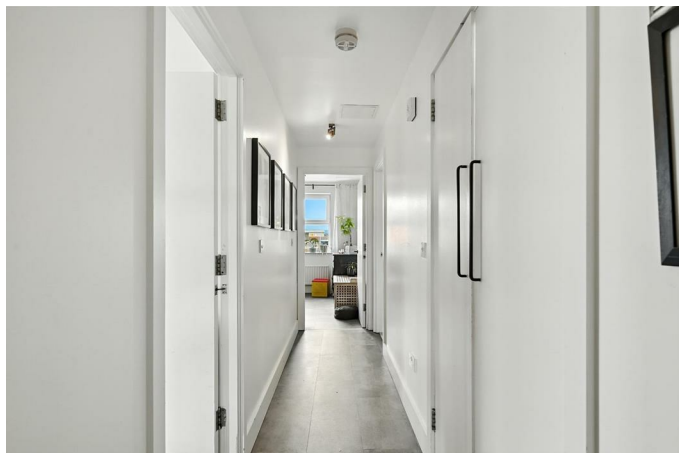
## THE ACCOMMODATION COMPRISES

### ON THE GROUND FLOOR

Intercom system and benefits from both stair and lift access.

### ON THE EIGHTH FLOOR

#### ENTRANCE HALL



Built in storage. Plumbed for washing machine

#### KITCHEN / LIVING / DINING



Modern range of high and low level units, double sink unit with mixer tap, 4 ring electric hob with built in oven, extractor fan, wine rack, integrated fridge / freezer, recessed spotlighting, part tiled walls and tile effect flooring.

#### OPEN PLAN 23'3" x 12'9" (7.10 x 3.9)

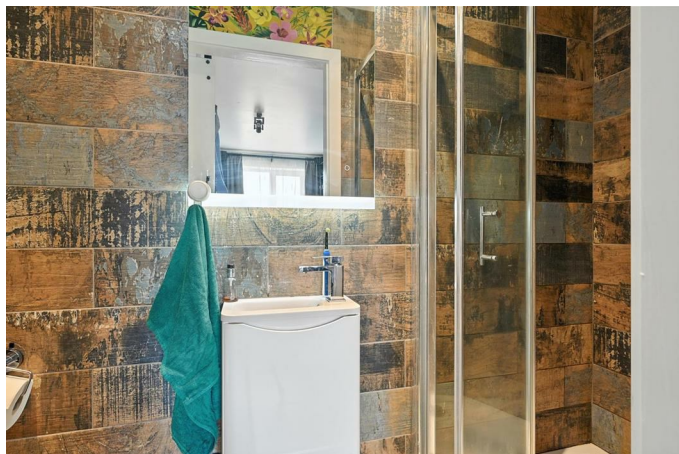


#### MASTER BEDROOM 14'2" x 9'3" (4.34 x 2.83)



Laminate flooring.

## ENSUITE SHOWER ROOM



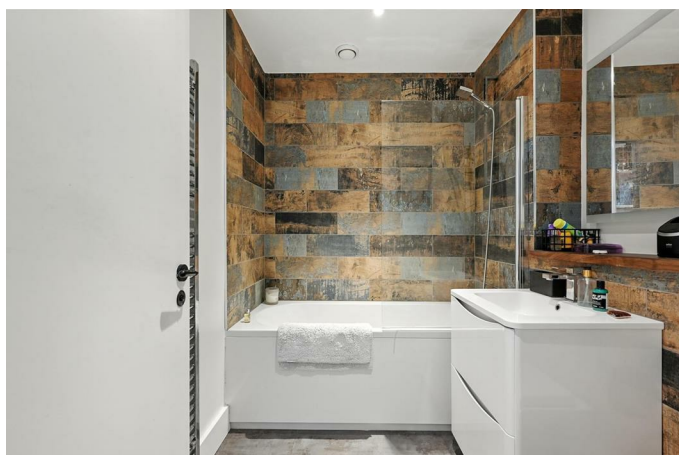
White suite comprising, low flush wc, wash hand basin with built in vanity unit, shower cubicle and fully tiled walls.

## BEDROOM TWO 9'10" x 8'2" (3.0 x 2.5)



Laminate flooring.

## BATHROOM



White suite comprising, low flush wc, wash hand basin with built in vanity unit, panel bath with shower over, fully tiled walls and tiled flooring.

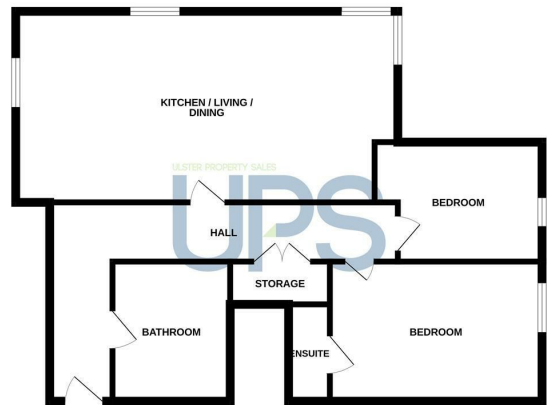
## LOCATION

At the top of Great Victoria Street



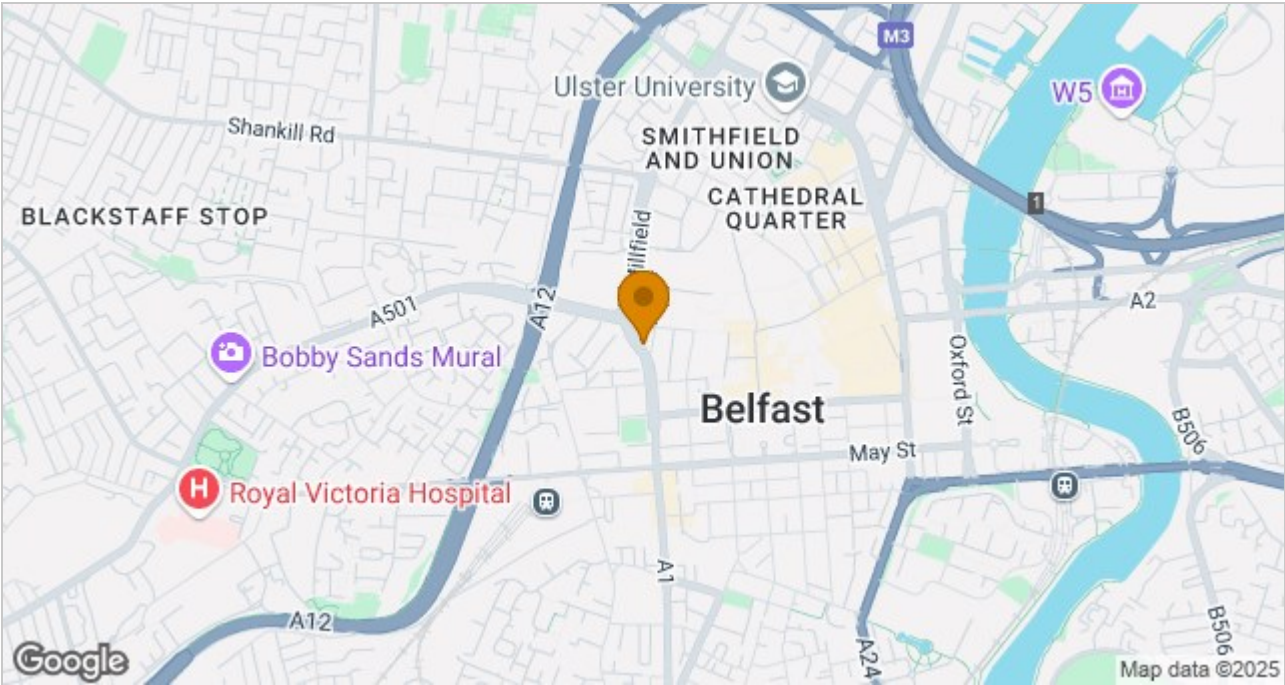
Floor Plan

8TH FLOOR



While every attempt has been made to ensure the accuracy of the floorplan contained here, measurements of rooms, sections, floors and any other details are approximate and no responsibility is taken for any errors, omissions or misstatements. This plan is for general guidance only and should be used as a guide only. It is not to be used as a basis for any legal proceedings. Map data ©2025

Area Map



These particulars, whilst believed to be accurate are set out as a general outline only for guidance and do not constitute any part of an offer or contract. Intending purchasers should not rely on them as statements of representation of fact, but must satisfy themselves by inspection or otherwise as to their accuracy. No person in this firms employment has the authority to make or give any representation or warranty in respect of the property.

ULSTERPROPERTYSALES.CO.UK

ANDERSONSTOWN 028 9060 5200	BANGOR 028 9127 1185	DONAGHADEE 028 9188 8000	GLENGORMLEY 028 9083 3295	RENTAL DIVISION 028 9070 1000
BALLYHACKAMORE 028 9047 1515	CARRICKFERGUS 028 9336 5986	DOWNPATRICK 028 4461 4101	MALONE 028 9066 1929	
BALLYNAHINCH 028 9756 1155	CAVEHILL 028 9072 9270	FORESTSIDE 028 9064 1264	NEWTOWNARDS 028 9181 1444	



John Thompson trading under licence as Ulster Property Sales (Downpatrick)  
©Ulster Property Sales is a Registered Trademark