

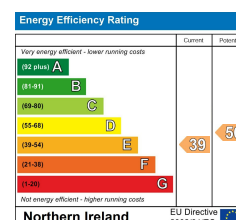


35 Tates Avenue, Belfast, BT9 7BY

Price Guide £250,000

Conveniently located just off the Lisburn Road within walking distance to Queens University and The Royal & City Hospitals, this spacious six bedroom mid-terrace offers an ideal investment opportunity for the keen landlord. Comprising six bedrooms, spacious living room, large fitted kitchen with dining, ground floor w.c and two shower rooms with two separate w.c's located on the first floor. The property also benefits from oil heating, PVC double glazed windows and HMO / CLEUD approval. We would urge immediate viewing to appreciate this excellent rental property.

- Mid Terrace Property
- Large Kitchen With Dining Space
- Six Double Bedrooms
- Oil Heating
- HMO Certified & CLEUD In Place
- Spacious Living Room
- Ground Floor W.C
- Two Showers With Separate Toilets Located On The First Floor
- PVC Double Glazed Windows



ACCOMMODATION COMPRISES

ON THE GROUND FLOOR

ENTRANCE HALL

Under stairs storage.

LIVING ROOM 14'1" x 13'1" (4.3 x 4.0)

Laminate floor.

RECEPTION ROOM / BEDROOM ONE 11'9" x 11'1" (3.6 x 3.4)

Laminate floor with built in storage.

W.C 5'2" x 4'3" (1.6 x 1.3)



White suite comprising low flush WC, pedestal wash hand basin and tiled floor.

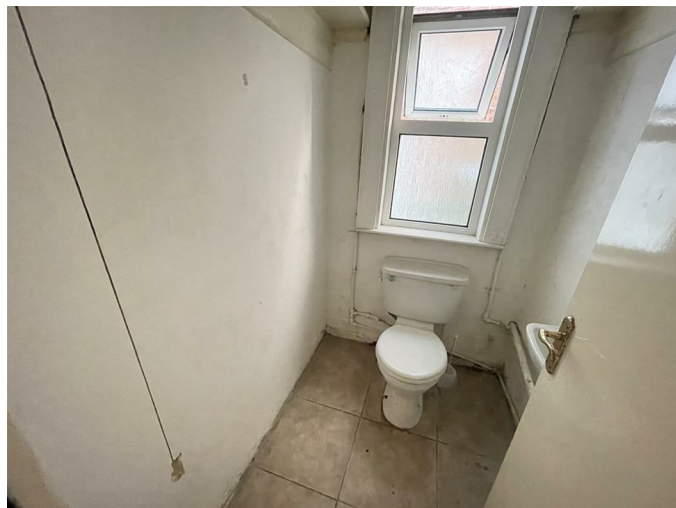
KITCHEN / DINING AREA 22'7" x 10'9" (6.9 x 3.3)



Range of low level units, stainless steel sink unit with drainer and mixer tap, plumbed for washing machine, part tiled walls and tiled floor. Access to enclosed rear yard.

ON THE FIRST FLOOR

W.C 4'7" x 3'11" (1.4 x 1.2)



White suite comprising low flush w.c, wash hand basin and tiled floor.

W.C 7'2" x 3'3" (2.2 x 1.0)

White suite comprising low flush w.c, wash hand basin and tiled floor.

SHOWER 7'2" x 3'3" (2.2 x 1.0)

White suite comprising shower with pedestal wash hand basin and tiled floor.

SHOWER 10'5" x 3'11" (3.2 x 1.2)



White suite comprising thermostatic shower with pedestal wash hand basin and tiled floor.

BEDROOM TWO 11'1" x 11'1" (3.4 x 3.4)



Laminate floor.

ON THE SECOND FLOOR

BEDROOM THREE 11'5" x 10'5" (3.5 x 3.2)



Laminate floor with built in storage

BEDROOM FOUR 18'4" x 13'9" (5.6 x 4.2)

Laminate floor.

ON THE THIRD FLOOR

Built in storage.

BEDROOM FIVE 12'9" x 7'6" (3.9 x 2.3)

Laminate floor with built in storage.

BEDROOM SIX 11'1" x 10'9" (3.4 x 3.3)



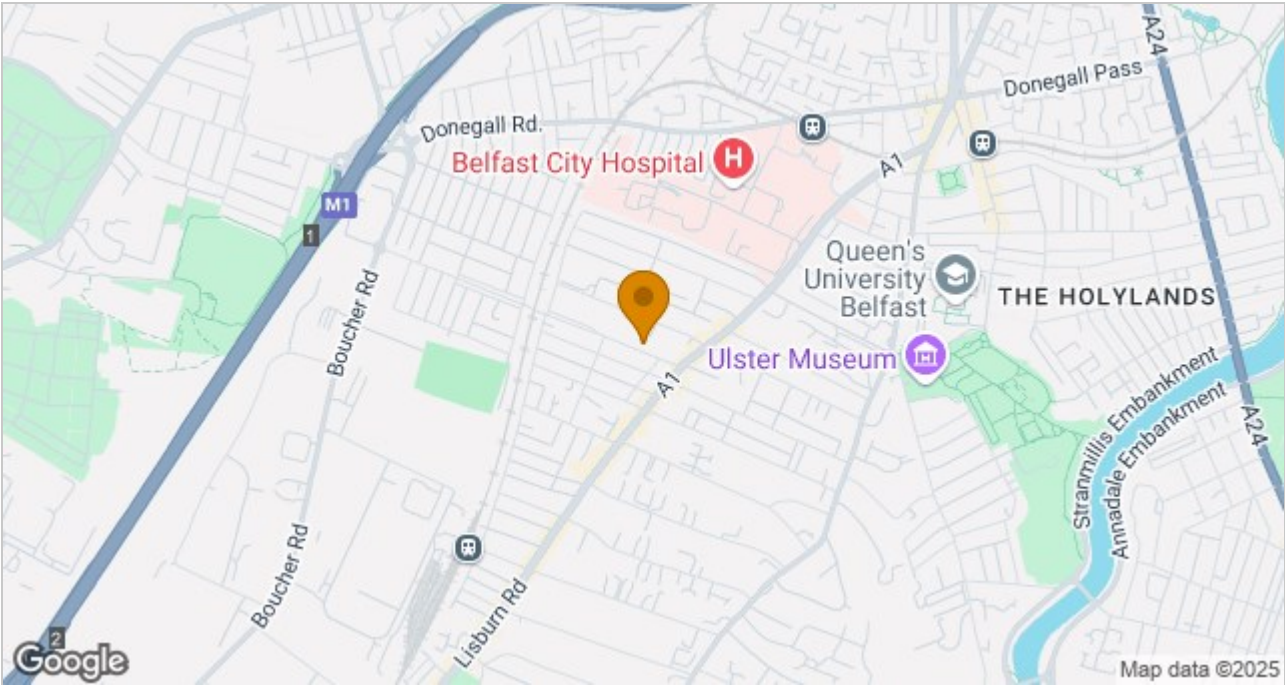
Laminate floor.

OUTSIDE

Enclosed yard to rear with outside lights.

Floor Plan

Area Map



These particulars, whilst believed to be accurate are set out as a general outline only for guidance and do not constitute any part of an offer or contract. Intending purchasers should not rely on them as statements of representation of fact, but must satisfy themselves by inspection or otherwise as to their accuracy. No person in this firms employment has the authority to make or give any representation or warranty in respect of the property.

ULSTERPROPERTYSALES.CO.UK

ANDERSONSTOWN 028 9060 5200	BANGOR 028 9127 1185	DONAGHADEE 028 9188 8000	GLENGORMLEY 028 9083 3295	RENTAL DIVISION 028 9070 1000
BALLYHACKAMORE 028 9047 1515	CARRICKFERGUS 028 9336 5986	DOWNPATRICK 028 4461 4101	MALONE 028 9066 1929	
BALLYNAHINCH 028 9756 1155	CAVEHILL 028 9072 9270	FORESTSIDE 028 9064 1264	NEWTOWNARDS 028 9181 1444	



John Thompson trading under licence as Ulster Property Sales (Downpatrick)
©Ulster Property Sales is a Registered Trademark