



CHESTNUT, SITE 173 HIGH TREES, DONAGHADEE, BT21

* Images shown are for a different house type within the same development.

High Specification Finishes Throughout -
Painted walls, ceilings and woodwork throughout
Moulded skirtings and architraves
Internal doors with ironmongery

Flooring -
Carpets and underlay to lounge, bedrooms, stairs and landing
Tiles (entrance hall, cloakroom/kitchen/bathrooms)
Tiled flooring to sunroom where applicable

Kitchen -
Choice of high quality kitchen doors in a selection of colours.
Choice of handles and worktops



Energy Efficiency Rating		
	Current	Potential
Very energy efficient - lower running costs		
(94-100) A		
(81-93) B		
(69-80) C		
(55-68) D		
(39-54) E		
(21-38) F		
(1-20) G		
Not energy efficient - higher running costs		
Northern Ireland		
EU Directive 2002/91/EC		

ASKING PRICE NO PRICE

CHESTNUT, SITE 173 HIGH TREES, DONAGHADEE, BT21

Key Features

House Type



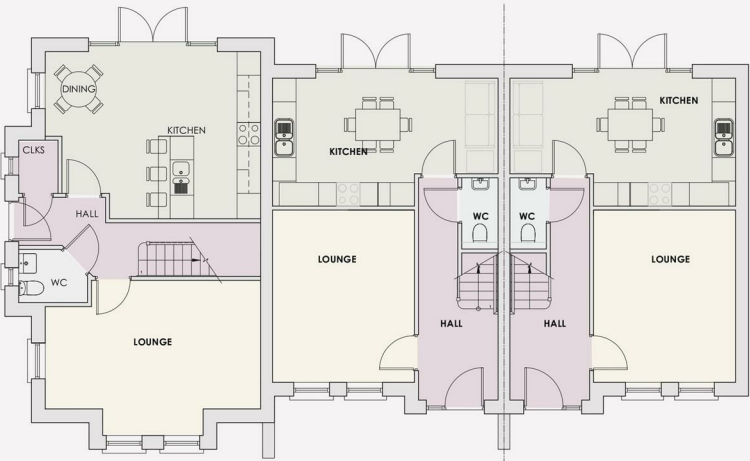
Chestnut/Hazel
Hazel
3 Bedroom
Townhouse

Floor plan

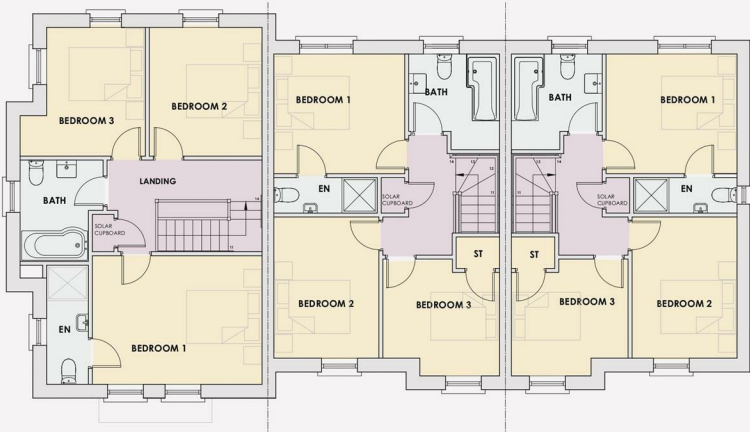
Floor Area:
Chestnut - Approximately 106.6m²/1147sq.ft
Hazel - Approximately 90.4m²/973sq.ft

Chestnut	Hazel
Ground Floor	Ground Floor
Lounge	Lounge
5.47m x 3.26m 18' 0" x 10' 9"	4.37m x 3.61m 14' 4" x 11' 10"
Kitchen/Dining	Kitchen/Dining
4.24m x 5.47m 13' 11" x 18' 0"	3.25m x 5.73m 10' 8" x 18' 10"
WC	WC
1.39m x 1.75m 4' 7" x 5' 9"	0.92m x 1.81m 3' 0" x 5' 11"
First Floor	First Floor
Master Bedroom	Master Bedroom
3.26m x 4.31m 14' 2" x 10' 9"	3.04m x 3.32m 10' 0" x 10' 10"
En-Suite	En-Suite
1.06m x 3.02m 3' 6" x 9' 11"	0.90m x 2.62m 2' 11" x 8' 7"
Bedroom 2	Bedroom 2
2.86m x 3.26m 9' 5" x 10' 8"	3.58m x 2.67m 11' 9" x 8' 9"
Bedroom 3	Bedroom 3
2.51m x 3.26m 8' 3" x 10' 8"	2.63m x 2.96m 8' 8" x 9' 9"
Bathroom	Bathroom
2.57m x 2.11m 8' 5" x 6' 11"	2.31m x 2.43m 7' 7" x 8' 0"
	Solar Cupboard
	0.69m x 0.90m 2' 4" x 2' 11"

Measurements & layout subject to change. Furniture not included.



Ground Floor



First Floor



DONAGHADEE



GREEN LIVING

Going Green

High Trees comes with a 'Green Pack'. Not only will your home help our environment by reducing the carbon footprint of the building, but we are also bringing you financial savings.

Green Pack Includes:

6 monocrystalline panels on each of our new homes. As well as producing clean energy for homeowners, it also reduces your running costs, at a time when energy prices are soaring. 5kWh solar battery. The addition of an integrated battery pack allows the electricity produced during the daylight hours to be consumed when you need it most. Electric car charging point. You will be ready to power an electric vehicle with free solar electricity if needed.

Biodiversity

It's our duty to protect natural beauty. At Strand Homes, biodiversity is an area we feel strongly about. We aim to grow and create better habitats for native species of ability wildlife. Becoming a member of the All Ireland Pollinator Plan, we have agreed to take action to protect and promote our pollinators.

WHAT STRAND HOMES ARE DOING:

- Use of native plants where possible
- Sourcing of pollinator friendly plants
- Placing of rocks in gardens to create homes for insects
- We thoughtfully plan each garden to ensure it thrives and flourishes over the years

Ground Floor

Lounge

5.47m x 3.26m | 18' 0" x 10' 9"

Kitchen/Dining

4.24m x 5.47m | 13' 11" x 18' 0"

WC

1.39m x 1.75m | 4' 7" x 5' 9"

First Floor

Master Bedroom

3.26m x 4.31m | 14' 2" x 10' 9"

En-Suite

1.06m x 3.02m | 3' 6" x 9' 11"

Bedroom 2

2.86m x 3.26m | 9' 5" x 10' 8"

Bedroom 3

2.51m x 3.26m | 8' 3" x 10' 8"

Bathroom

2.57m x 2.11m | 8' 5" x 6' 11"

CHESTNUT, SITE 173 HIGH TREES, DONAGHADEE, BT21







CHESTNUT, SITE 173 HIGH TREES, DONAGHADEE, BT21



Questions you may have.

Which mortgage would suit me best?
How much deposit will I need?
What are my monthly repayments going to be?

To answer these and other mortgage related questions contact Laura on .

Your home may be repossessed if you do not keep up repayments on your mortgage.

We DO NOT charge for initial mortgage consultations. We may charge a fee on completion depending on circumstances. Our typical fee is £250, however, please confirm with Mortgage Consultant at time of appointment. 18190708

Please note that we have not tested the services or systems in this property. Purchasers should make/commission their own inspections if they feel it is necessary.

ULSTERPROPERTYSALES.CO.UK

ANDERSONSTOWN
028 9060 5200

BALLYHACKAMORE
028 9047 1515

BALLYNAHINCH
028 9756 1155

BANGOR
028 9127 1185

CARRICKFERGUS
028 9336 5986

CAUSEWAY COAST
0800 644 4432

CAVEHILL
028 9072 9270

DONAGHADEE
028 9188 8000

DOWNPATRICK
028 4461 4101

FORESTSIDE
028 9064 1264

GLENGORMLEY
028 9083 3295

MALONE
028 9066 1929

NEWTOWNARDS
028 9181 1444

RENTAL DIVISION
028 9070 1000

CWS Properties Ltd; Trading under licence as Ulster Property Sales (Newtownards) Reg. No. NI616437;
Registered Office: 324 Upper Newtownards Road, Belfast BT4 3EX
©Ulster Property Sales is a Registered Trademark

