



**1-3 COURT SQUARE,
NEWTOWNARDS, BT23 7NZ**

OFFERS AROUND £195,000

This modern commercial property is located in the heart of Newtownards, just off High Street at the junction of Court Square and Castle Street. Occupying a prominent corner position, it sits in an area currently undergoing significant regeneration and benefits from attractive views overlooking the Memorial Garden to the front.

The two-storey premises are bright and contemporary throughout, offering the potential for approximately 100 covers on each level. The ground floor features a fully fitted kitchen along with multiple storage rooms. The property is fully fitted with bars on both floors, WC facilities, and dedicated seating areas.

The first floor also benefits from its own separate entrance, making it ideal for alternative uses such as a nightclub or function space.

Newtownards is a thriving market town experiencing ongoing residential development, which is increasing footfall both during the day and into the evening. With several new restaurants and businesses opening locally, 1-3 Court Square represents a fantastic opportunity for someone seeking an exciting, ready-to-trade business venture. Early viewing is highly recommended.

Please note: VAT is payable on this property.

Commercial EPC Rating: 43

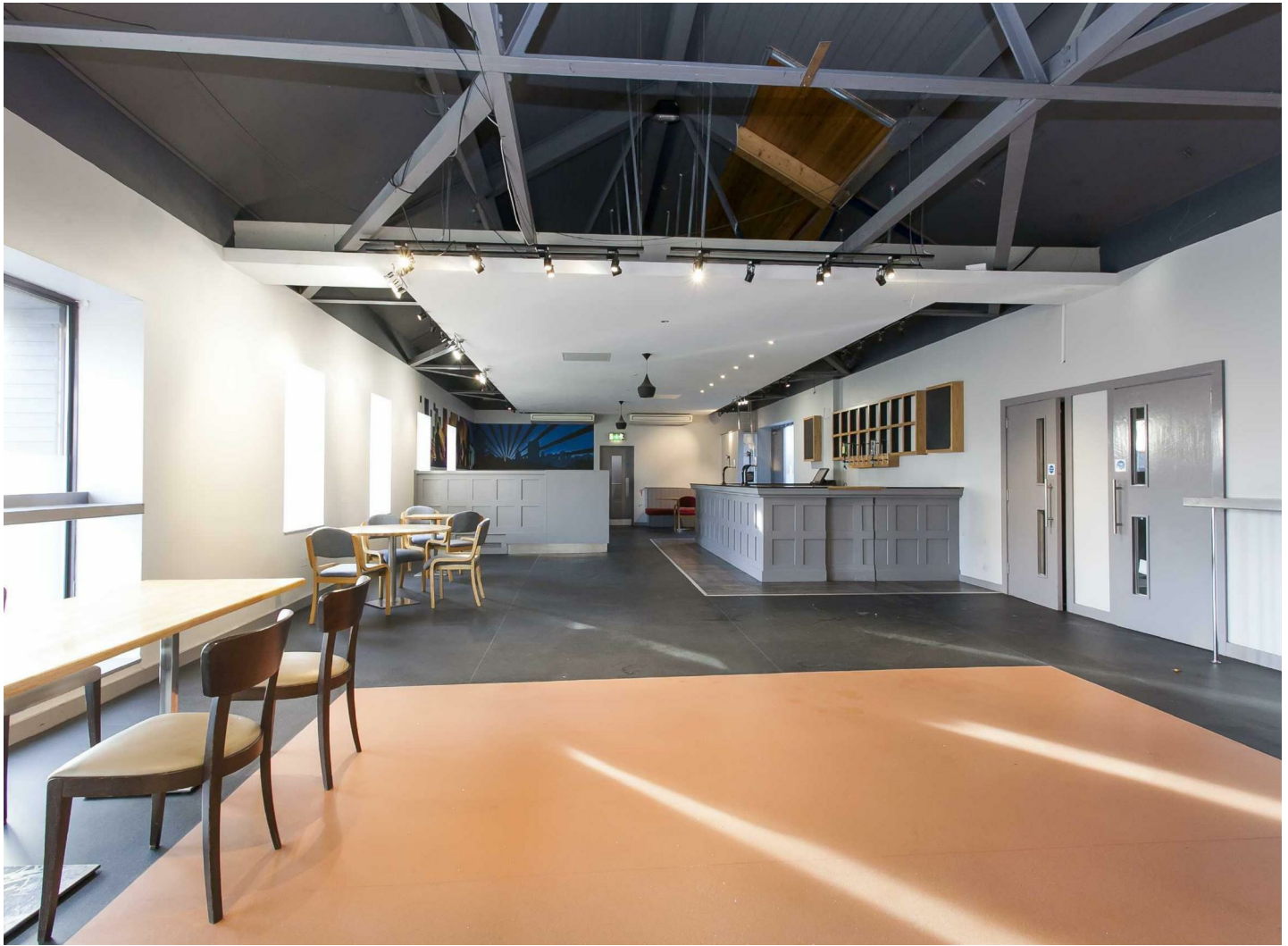


Key Features

- Two Storey Building With First Floor Benefitting From Separate Entrance
- Range Of Fixtures And Fittings Included In Sale
- Great Location Within Newtownards Town Centre
- Premises On A Prominent Corner Position Just Off High Street
- Bar, Seating Areas And WC's On Both Floors
- Please note: VAT is payable on this property

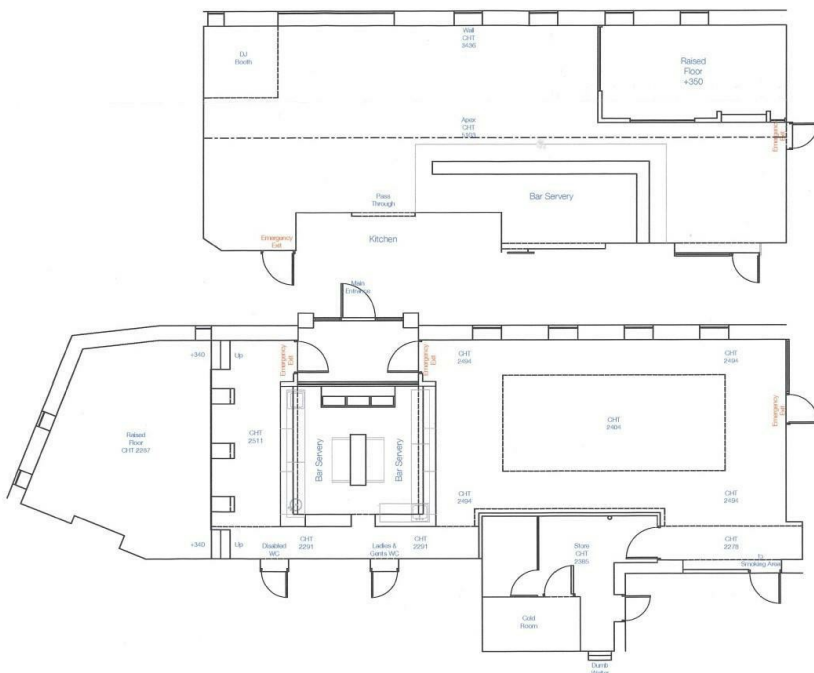












Energy Efficiency Rating		
	Current	Potential
Very energy efficient - lower running costs		
(92 plus) A		
(81-91) B		
(69-80) C		
(55-68) D		
(39-54) E		
(21-38) F		
(1-20) G		
Not energy efficient - higher running costs		
Northern Ireland	EU Directive 2002/91/EC	

Questions you may have. **Which mortgage would suit me best?**

How much deposit will I need? What are my monthly repayments going to be?

To answer these and other mortgage related questions contact our mortgage advisor on 028 91811444.

Your home may be repossessed if you do not keep up repayments on your mortgage.

We DO NOT charge for initial mortgage consultations. We may charge a fee on completion depending on circumstances. Our typical fee is £250, however, please confirm with Mortgage Consultant at time of appointment.

Please note that we have not tested the services or systems in this property. Purchasers should make/commission their own inspections if they feel it is necessary.

ULSTERPROPERTYSALES.CO.UK

ANDERSONSTOWN
028 9060 5200

BALLYHACKAMORE
028 9047 1515

BALLYNAHINCH
028 9756 1155

BANGOR
028 9127 1185

CARRICKFERGUS
028 9336 5986

CAVEHILL
028 9072 9270

DONAGHADEE
028 9188 8000

DOWNPATRICK
028 4461 4101

FORESTSIDE
028 9064 1264

GLENGORMLEY
028 9083 3295

MALONE
028 9066 1929

NEWTOWNARDS
028 9181 1444

RENTAL DIVISION
028 9070 1000



CWS Properties Ltd; Trading under licence as Ulster Property Sales (Newtownards) Reg. No. NI616437;
Registered Office: 324 Upper Newtownards Road, Belfast BT4 3EX
©Ulster Property Sales is a Registered Trademark