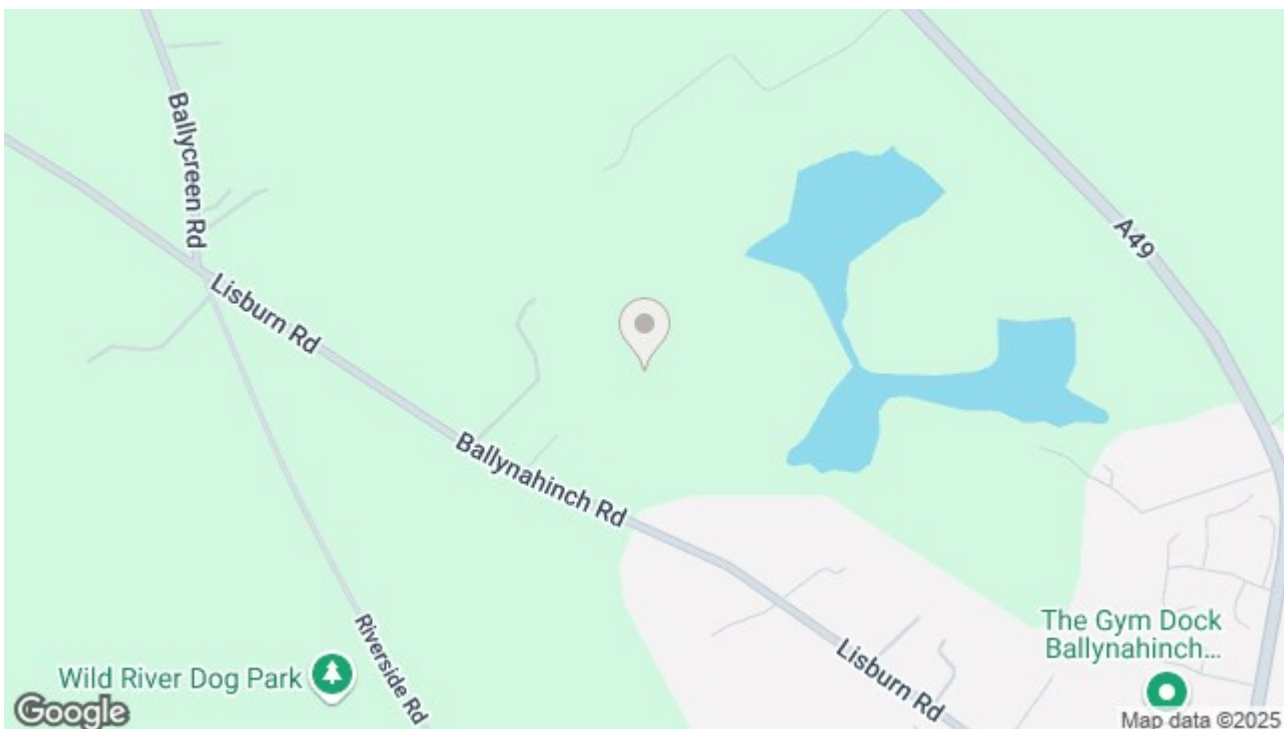


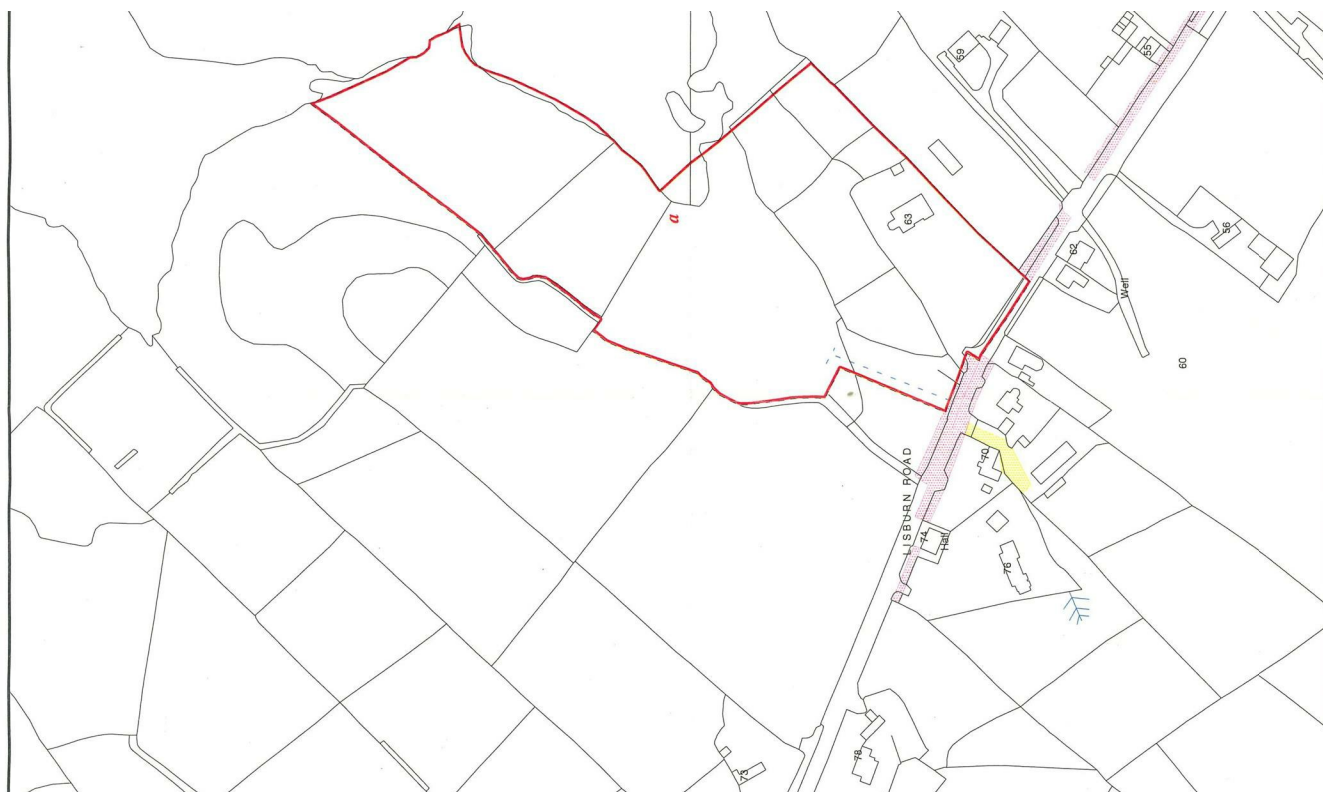


63 LISBURN ROAD, BALLYNAHINCH, DOWN, BT24 8TT



OFFERS AROUND £495,000

Situated on a mature and private site this luxury family home must be viewed to fully appreciate all that it has to offer. The impressive residence is approached by a sweeping driveway and is complimented with spacious and beautifully presented gardens along with approximately 9 acres of land. The property comprises entrance hall, living room, dining room through to conservatory, bright and spacious open plan kitchen with dining/ living area with wood burning stove through to utility room. There are two bedrooms on the ground floor as well as a study, there is also a luxury family bathroom with feature free standing style bath. On the first floor there is a living room/ kitchen, further two spacious bedrooms with en-suite and master with walk in wardrobe. This section of the house can be separately accessed and is ideal as a granny flat or airbnb accommodation. Outside the family home benefits from beautifully presented gardens with stunning views over the surrounding countryside and lake, a double garage and an outhouse with toilet facilities. There are gardens laid in lawn to the front and side with mature trees and to the rear stoned and paved patio areas. The 9 acres of land surrounds the property with about 3 acres being usable as grazing land. Rarely will you come across as spectacular a site in the country, along with the land and stunning accommodation, this property is sure to appeal to many.



At a glance:

- Four bedrooms
- Large gardens in lawn and 9 acres
- Study
- Outhouse
- Beautifully presented
- Two with ensuite
- Living room with fireplace
- Double garage
- Conservatory
- Views over lake

Entrance Hall

3'7" x 4'1"

Wooden flooring. Wooden Stairs, double door.

Living Room

12'11" x 16'0"

Bright, spacious living room. Window to side, bow window to front, fireplace. Carpeted flooring. Cornicing and ceiling rose.

Dining Room

11'11" x 16'0"

Large dining room. Double door to conservatory. Carpeted flooring. Cornicing and ceiling rose.

Conservatory

Windows surrounding. Double doors to garden. Tiled flooring.

Bedroom 1

11'11" x 16'0"

Window to side. Carpeted flooring.

Bathroom

11'9" x 9'11"

White suite comprising low flush w.c, wash hand basin, stand alone bath and separate shower cubicle. Window to rear. Tiled flooring.

Hotpress

3'8" x 5'6"

Large walk in hotpress.

Kitchen/ Living/ Dining area

15'10" x 17'6"

Kitchen comprising high and low rise units with integrated fridge freezer, dishwasher, hob, oven, extractor fan, stainless steel sink and drainer. Granite worktops. Window to rear, fireplace with stove. Tiled flooring and splash area. Heated wall radiator. Door to utility room.

Utility Room

8'11" x 14'0"

High and low rise units. Integrated stainless steel sink and drainer with recess for washing machine and dryer. Window to rear. Door to rear.

Rear Hall

PVC door to carpeted hall. Stairs.

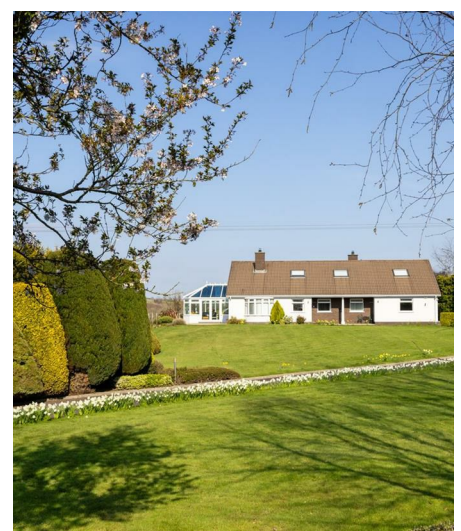
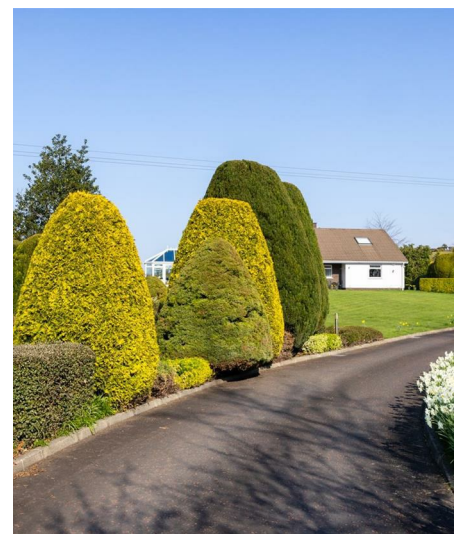
Storage

3'7" x 2'8"

Bedroom 2

12'10" x 9'11"

Window to front. Carpeted flooring.



Study

12'10" x 8'10"

Window to front, door.
Wooden flooring.

Landing

12'0" x 6'7"

Carpeted flooring.
Skylight.

Bedroom 3

15'8" x 16'0"

Three skylights. Carpeted
flooring. Door to en-suite.

En-suite

Suite comprising low flush
w.c, shower cubicle and
wash hand basin with
vanity. Storage cupboard.
Skylight.

Bedroom 4

Carpeted flooring. Door to
en-suite and wardrobe.
Skylight.

En-suite

Tiled flooring. Suite
comprising shower
cubicle, low flush w.c and
shower cubicle.

Wardrobe

5'10" x 4'4"

Door to:

Living/ Dining area

14'0" x 16'0"

Kitchen with recess for
dishwasher, dining area.
Window to side. Door to utility
room. Stairs to rear entrance.
Skylight.

Utility Space

4'9" x 3'10"

Space for washing machine.

Double Garage

Up and over door. Power and
light.

Outhouse

17'7 x 14'0

Outhouse with w.c and wash
hand basin.

Basement

14'11 x 11'9

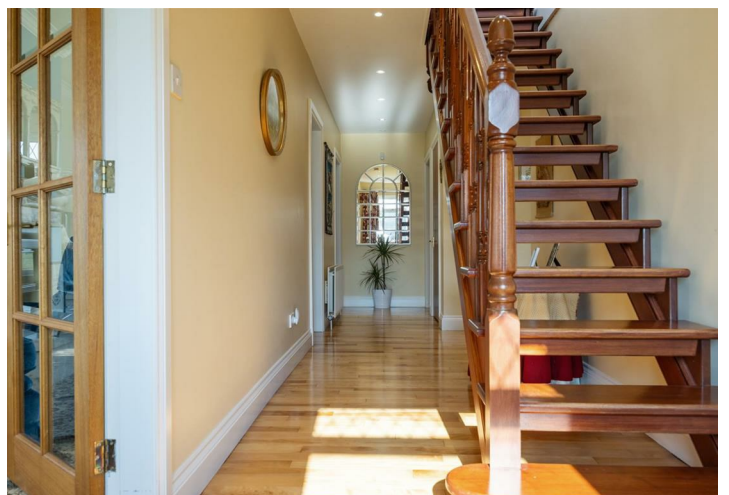
Large storage area.

OUTSIDE

Driveway to property with space
for multiple cars. Well presented
gardens to the front and rear
laid out in lawns with mature
plantings.

Land

The land is surrounding by
approximately 9 acres of land
which runs down to the lake.
About 3 acres of this is usable as
grazing land.

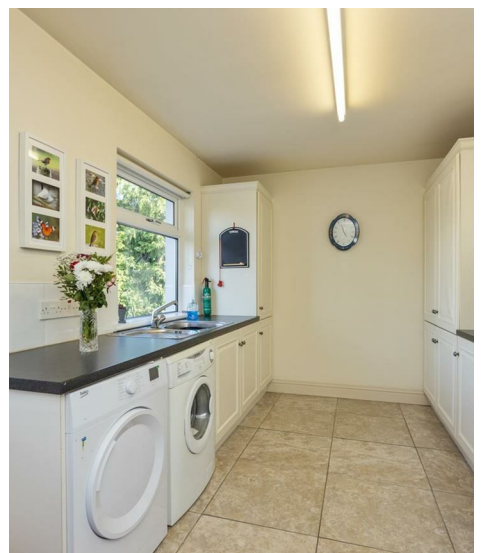








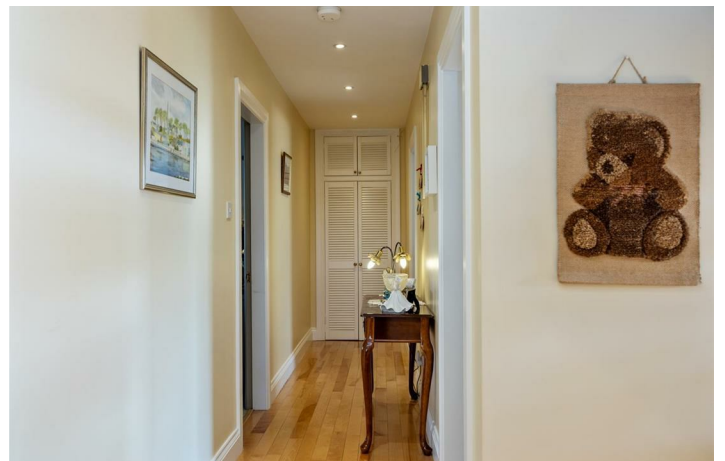








Energy Efficiency Rating		
	Current	Potential
Very energy efficient - lower running costs		
(92 plus) A		
(81-91) B		
(69-80) C		
(55-68) D	57	65
(39-54) E		
(21-38) F		
(1-20) G		
Not energy efficient - higher running costs		
Northern Ireland	EU Directive 2002/91/EC	





Questions you may have. **Which mortgage would suit me best?**

How much deposit will I need? What are my monthly repayments going to be?

To answer these and other mortgage related questions contact our mortgage advisor on 0289 756 1155.

Your home may be repossessed if you do not keep up repayments on your mortgage.

We DO NOT charge for initial mortgage consultations. We may charge a fee on completion depending on circumstances. Our typical fee is £250, however, please confirm with Mortgage Consultant at time of appointment.

Please note that we have not tested the services or systems in this property. Purchasers should make/commission their own inspections if they feel it is necessary.

ULSTERPROPERTYSALES.CO.UK

ANDERSONSTOWN
028 9060 5200

BALLYHACKAMORE
028 9047 1515

BALLYNAHINCH
028 9756 1155

BANGOR
028 9127 1185

CARRICKFERGUS
028 9336 5986

CAVEHILL
028 9072 9270

DONAGHADEE
028 9188 8000

DOWNPATRICK
028 4461 4101

FORESTSIDE
028 9064 1264

GLENGORMLEY
028 9083 3295

MALONE
028 9066 1929

RENTAL DIVISION
028 9070 1000

PRS Property
Redress
Scheme

OFT
Approved code

Petrie Enterprises Ltd; Trading under licence as Ulster Property Sales (Ballymena) Gareth Dallas
©Ulster Property Sales is a Registered Trademark