



ULSTER PROPERTY SALES

# UPS

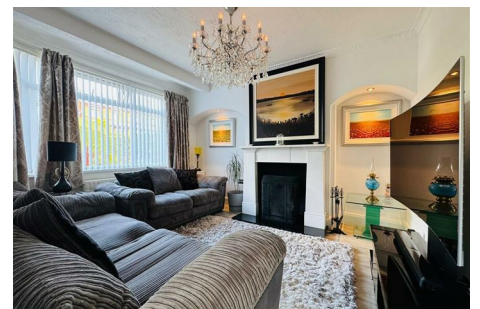
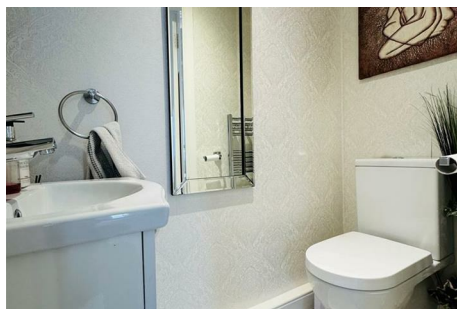
**GLENGORMLEY BRANCH**

303 Antrim Road, Glengormley,  
Newtownabbey, County Antrim, BT36

028 9083 3295

glengormley@ulsterpropertysales.co.uk

NETWORK STRENGTH - LOCAL KNOWLEDGE



## 120 SERPENTINE ROAD

Whitewell Road  
Newtownabbey BT36

- Extended Semi Detached
- 3 Bedrooms
- 3 Reception Rooms
- Modern Kitchen
- Downstairs WC
- PVC Double Glazing / Gas
- Detached Garage
- Large Timber Storage Room

Energy Efficiency Rating		
	Current	Potential
Very energy efficient - lower running costs		
(92 plus) <b>A</b>		
(81-91) <b>B</b>		
(69-80) <b>C</b>		
(55-68) <b>D</b>		
(39-54) <b>E</b>		
(21-38) <b>F</b>		
(1-20) <b>G</b>		
Not energy efficient - higher running costs		
Northern Ireland		EU Directive 2002/91/EC

**Offers Over £199,950**

# 120 Serpentine Road

## Whitewell Road, Newtownabbey, BT36 7JG



### ACCOMMODATION COMPRISES

#### GROUND FLOOR

##### ENTRANCE HALL

Composite double glazed front door, wood laminate flooring, radiator

##### FURNISHED CLOAKROOM

Low flush wc, vanity unit, chrome heated towel radiator

##### LOUNGE

13'2" x 10'10" at widest (4.01m" x 3.30m" at widest)

Feature granite inset, marble surround, wood laminate flooring, radiator

##### FAMILY ROOM

10'11" x 10'9" (3.35m" x 3.28m")

Wood laminate flooring, radiator, archway to dining room

##### DINING ROOM

9'5" x 9'0" (2.87m" x 2.74m")

Wood laminate flooring, radiator, pvc double glazed sliding patio doors to rear, archway to kitchen

#### KITCHEN

14'1" x 5'11" (4.29m" x 1.80m")

Modern range of white high gloss high and low level units, complimentary worktop, single drainer sink unit, built in oven, ceramic hob, stainless steel extractor fan, fridge / freezer space, integrated dishwasher, plumbed for washing machine, wood laminate flooring

#### FIRST FLOOR

##### LANDING

Access to roofspace

##### BEDROOM 1

13'2" x 9'10" at widest (4.01m" x 3.00m" at widest )

Radiator

##### BEDROOM 2

10'9" x 10'3" at widest (3.28m" x 3.12m" at widest )

Radiator, superb views

##### BEDROOM 3

6'9" x 5'2" (2.06m" x 1.57m")

Radiator

#### BATHROOM

Luxury white suite comprising corner jacuzzi bath with shower attachment, floating vanity unit, low flush wc, separate chrome corner shower cubicle, thermostatic shower, partly tiled walls, chrome heated towel radiator

#### OUTSIDE

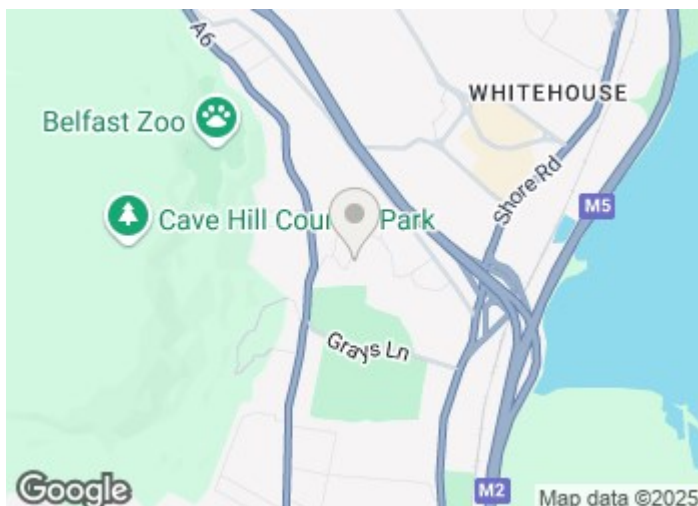
Crazy paved driveway

Stoned garden to front

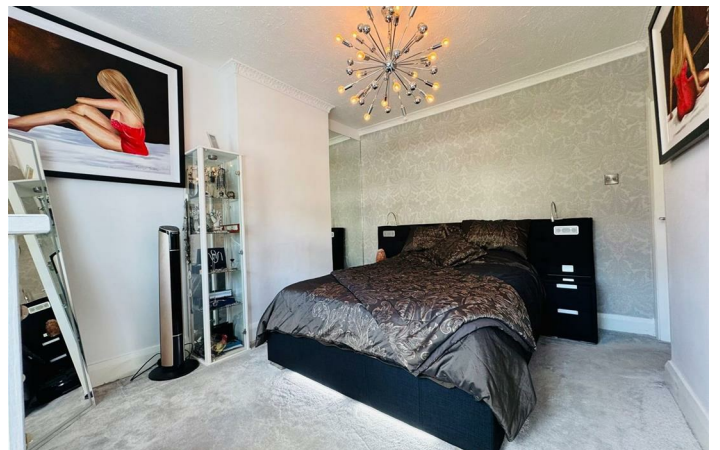
Detached garage at rear, up and over door, light & power

Paved garden to rear with feature raised composite decking area offering stunning views towards Belfast Lough

Large timber storage unit 23'3" x 19'1" light & power, electric heaters, suitable for various uses i.e entertaining / bar / social/ office/gym/playroom

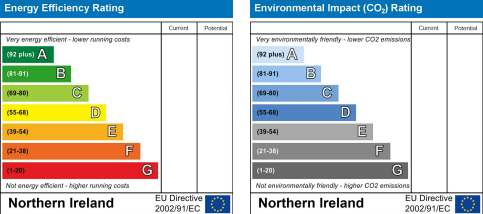


### Directions



Floor Plan

These particulars, whilst believed to be accurate are set out as a general outline only for guidance and do not constitute any part of an offer or contract. Intending purchasers should not rely on them as statements of representation of fact, but must satisfy themselves by inspection or otherwise as to their accuracy. No person in this firms employment has the authority to make or give any representation or warranty in respect of the property.



ULSTERPROPERTYSALES.CO.UK

ANDERSONSTOWN  
028 9060 5200

BALLYHACKAMORE  
028 9047 1515

BALLYNAHINCH  
028 9756 1155

BANGOR  
028 9127 1185

CARRICKFERGUS  
028 9336 5986

CAVEHILL  
028 9072 9270

DONAGHADEE  
028 9188 8000

DOWNPATRICK  
028 4461 4101

FORESTSIDE  
028 9064 1264

GLENGORMLEY  
028 9083 3295

MALONE  
028 9066 1929

NEWTOWNARDS  
028 9181 1444

RENTAL DIVISION  
028 9070 1000



Keith Larmour trading under licence as Ulster Property Sales (Glengormley)  
©Ulster Property Sales is a Registered Trademark