

165 SHORE ROAD

Whitehouse Newtownabbey BT37

- Semi Detached Villa
- 3 Bedrooms
- Spacious Lounge / Diner
- Fitted Kitchen
- Modern White Bathroom
- Downstairs Wet Room
- Pvc Double Glazing / Oil
- Driveway & Gardens

Energy Efficiency Rating		
	Current	Potential
Very energy efficient - lower running costs		
(92 plus) A		
(81-91) B		
(69-80) C		
(55-68) D		
(39-54) E	51	64
(21-38) F		
(1-20) G		
Not energy efficient - higher running costs		
Northern Ireland		EU Directive 2002/91/EC

£164,950

165 Shore Road

Whitehouse, Newtownabbey, BT37 9SZ



ACCOMMODATION COMPRISES;

GROUND FLOOR

ENTRANCE HALL

Pvc double glazed front door, radiator, under stairs storage.

LOUNGE / DINING ROOM

23'9 x 9'4 (7.24m x 2.84m)

2 Radiators.

KITCHEN

12'10 x 11'8 (3.91m x 3.56m)

Range of high and low level fitted units with Granite worktops.

Stainless steel single drainer sink unit, cooker space, American fridge / freezer space, plumbed for washing machine and dishwasher, fully tiled

walls, tiled floor, radiator, pvc double glazed back door.

WET ROOM

Walk in shower area with Aqualisa shower, vanity unit and low flush W.C. Fully tiled walls, tiled floor, radiator, 2x Velux windows.

FIRST FLOOR

LANDING

BEDROOM 1

10'10 x 9'1 (3.30m x 2.77m)

Built in sliding robes, radiator.

BEDROOM 2

10'5 x 9'1 at widest (3.18m x 2.77m at widest)

Built in robes, radiator.

BEDROOM 3

6'10 x 5'5 (2.08m x 1.65m)

Radiator.

BATHROOM

Modern white suite comprising: panelled bath, vanity unit and low flush W.C. Fully pvc panelled walls, wood laminate tile effect flooring, chrome heated towel rail.

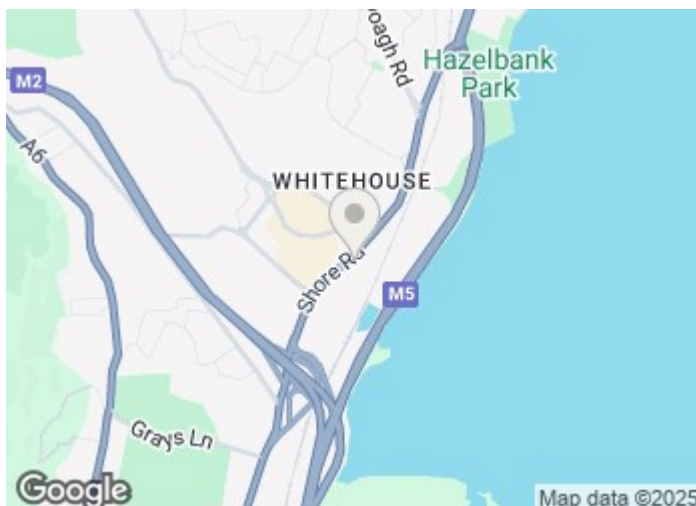
OUTSIDE

Brick paved driveway for off street parking.

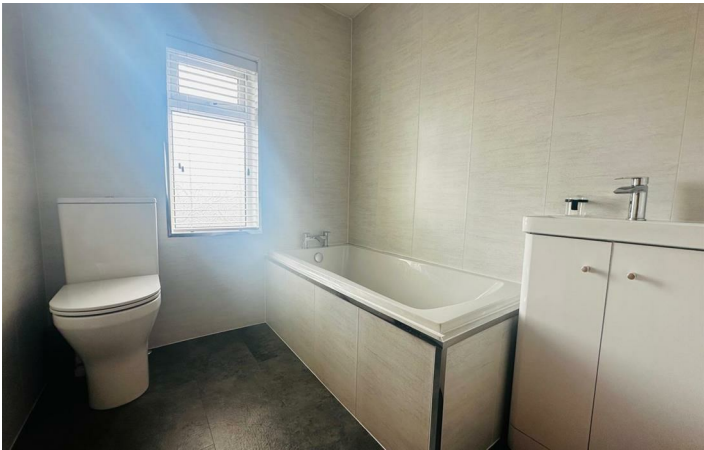
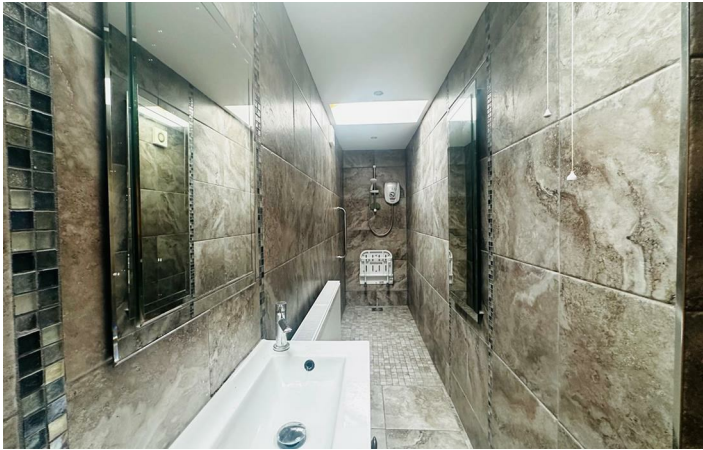
Garden to front in lawn.

Fully enclosed garden to rear with artificial grass and pebbled areas. Garden shed x2.

Pvc fascia and guttering.



Directions



Floor Plan

These particulars, whilst believed to be accurate are set out as a general outline only for guidance and do not constitute any part of an offer or contract. Intending purchasers should not rely on them as statements of representation of fact, but must satisfy themselves by inspection or otherwise as to their accuracy. No person in this firms employment has the authority to make or give any representation or warranty in respect of the property.

