



ULSTER PROPERTY SALES

UPS

GLENGORMLEY BRANCH

303 Antrim Road, Glengormley,
Newtownabbey, County Antrim, BT36

028 9083 3295

glengormley@ulsterpropertysales.co.uk

NETWORK STRENGTH - LOCAL KNOWLEDGE



24 MAYFIELD HEIGHTS

Hightown Road
Newtownabbey BT36

- Semi Detached Villa
- 4 Bedrooms
- Lounge
- Modern Kitchen / Diner
- Downstairs WC
- Modern White Bathroom
- PVC Double Glazing & Gas
- Driveway & Gardens

Energy Efficiency Rating		
Very energy efficient - lower running costs		
(92 plus) A		
(81-91) B		
(69-80) C		
(55-68) D		
(39-54) E		
(21-38) F		
(1-20) G		
Not energy efficient - higher running costs		
Current	Potential	
75	75	
Northern Ireland		EU Directive 2002/91/EC

Offers Over £199,950

24 Mayfield Heights

Hightown Road, Newtownabbey, BT36 7WL



ACCOMMODATION COMPRISES

GROUND FLOOR

ENTRANCE HALL

Pvc double glazed front door, wood laminate flooring, radiator

FURNISHED CLOAKROOM

Low flush wc, pedestal wash hand basin, wood laminate flooring, radiator

LOUNGE

13'6" x 12'6" at widest (4.11m" x 3.81m" at widest)

Feature fireplace, granite inset, wood laminate flooring, radiator, open to kitchen / diner

KITCHEN / DINER

19'5" x 10'0" (5.92m" x 3.05m")

White high gloss high and low level units, formica worktop, basin 1/2 stainless steel sink unit, built in stainless steel oven, stainless steel gas hob, stainless steel extractor fan,

fridge / freezer space, plumbed for washing machine, partly tiled walls, tiled floor in kitchen, radiator, double glazed side door, wood laminate flooring in dining area, radiator, pvc double glazed door to rear

FIRST FLOOR

LANDING

Storage cupboard

BEDROOM 1

11'9" x 11'0" at widest (3.58m" x 3.35m" at widest)

Built in wardrobe and cupboard, radiator

BEDROOM 2

9'7" x 8'6" (2.92m" x 2.59m")

Radiator

BEDROOM 3

10'6" x 9'4" at widest (3.20m" x 2.84m" at widest)

Radiator

BATHROOM

Modern white suite comprising bath, floating vanity unit, low flush wc, chrome corner shower cubicle, thermostatic shower, fully tiled walls, tiled floor, chrome heated towel radiator

LANDING

ROOFSPACE / BEDROOM 4

16'4" x 11'2" at widest (4.98m" x 3.40m" at widest)

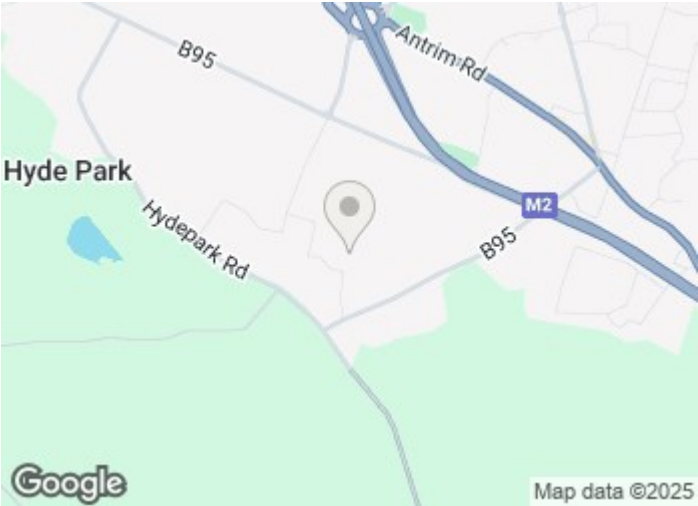
Wood laminate flooring, radiator, under eaves storage, two velux windows

OUTSIDE

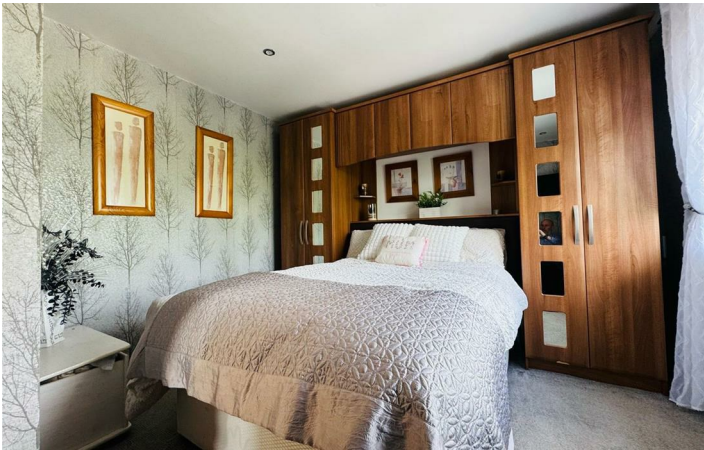
Tarmac driveway

Garden to front in lawn

Fully enclosed paved garden to rear with feature decking area and artificial grass

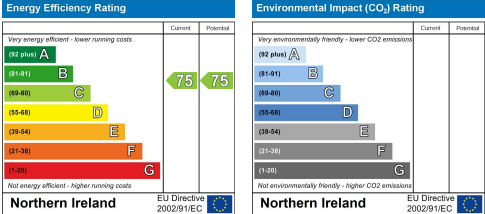


Directions



Floor Plan

These particulars, whilst believed to be accurate are set out as a general outline only for guidance and do not constitute any part of an offer or contract. Intending purchasers should not rely on them as statements of representation of fact, but must satisfy themselves by inspection or otherwise as to their accuracy. No person in this firms employment has the authority to make or give any representation or warranty in respect of the property.



ULSTERPROPERTYSALES.CO.UK

ANDERSONSTOWN
028 9060 5200

BALLYHACKAMORE
028 9047 1515

BALLYNAHINCH
028 9756 1155

BANGOR
028 9127 1185

CARRICKFERGUS
028 9336 5986

CAVEHILL
028 9072 9270

DONAGHADEE
028 9188 8000

DOWNPATRICK
028 4461 4101

FORESTSIDE
028 9064 1264

GLENGORMLEY
028 9083 3295

MALONE
028 9066 1929

NEWTOWNARDS
028 9181 1444

RENTAL DIVISION
028 9070 1000