



3E RATHCOOLE CLOSE

Rathcoole Newtownabbey BT37

- First Floor Apartment
- 1 Bedroom
- Lounge
- Fitted Kitchen
- Shower Room
- PVC Double Glazing
- Gas Heating
- Investment Opportunity

Energy Efficiency Rating		
	Current	Potential
Very energy efficient - lower running costs		
(92 plus) A		
(81-91) B		
(69-80) C		
(55-68) D		
(39-54) E		
(21-38) F		
(1-20) G		
Not energy efficient - higher running costs		
Northern Ireland	76	76
		EU Directive 2002/91/EC

Offers Around £64,950

3E Rathcoole Close

Rathcoole, Newtownabbey, BT37 9AP



ACCOMMODATION COMPRISES

ENTRANCE HALL

Wood laminate floor, radiator, intercom

LOUNGE

12'3" x 12'0" (3.73 x 3.66)
Wood laminate flooring, radiator.

VIEW

KITCHEN

9'1" x 9'0" (2.77 x 2.74)
Range of high and low level units, formica worktop, single

drainer stainless steel sink unit, Communal gardens plumbed for washing machine, cooker space, fridge / freezer space, partly tiled walls, gas boiler, radiator

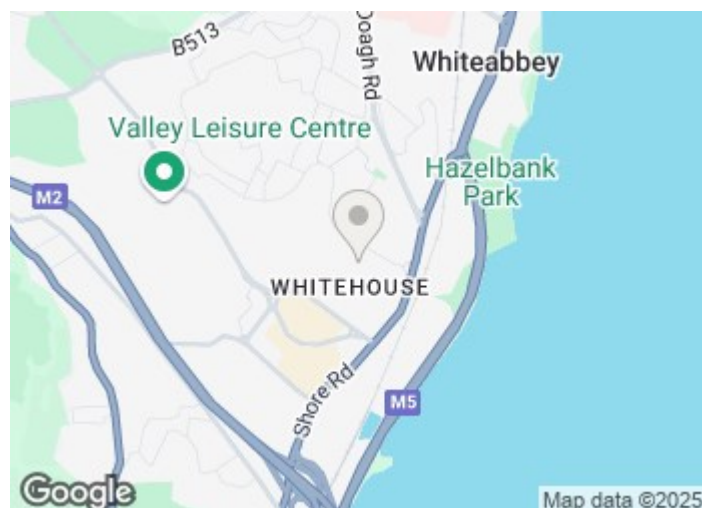
BEDROOM

11'7" x 9'9" (3.53 x 2.97)
Wood laminate floor, radiator, built in robe.

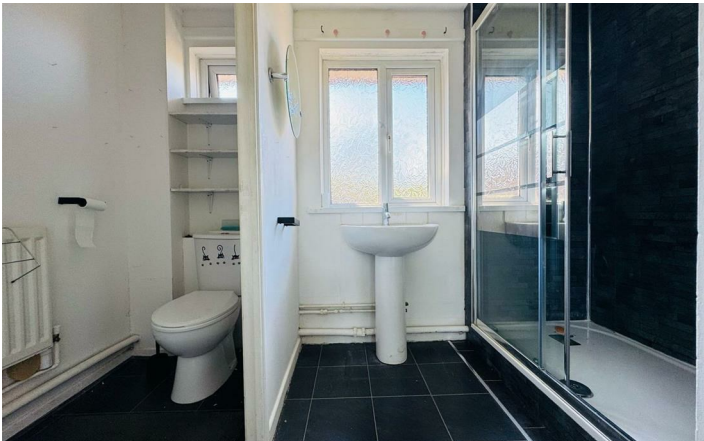
SHOWER ROOM

Double shower cubicle, electric shower, pedestal wash hand basin, low flush wc, tiled floor

OUTSIDE



Directions



Floor Plan

These particulars, whilst believed to be accurate are set out as a general outline only for guidance and do not constitute any part of an offer or contract. Intending purchasers should not rely on them as statements of representation of fact, but must satisfy themselves by inspection or otherwise as to their accuracy. No person in this firms employment has the authority to make or give any representation or warranty in respect of the property.

