



Flowerfield Road, Portstewart

Offers Over £225,000

4 bedroom semi-detached house for sale

Description

Capture the charm of coastal living in this delightful four-bedroom semi-detached house nestled in Portstewart.

With its own off-street parking, a serene enclosed garden, and a convenient garage, this property offers the perfect blend of comfort and style.

Step inside to discover an inviting open plan kitchen/living area, a practical utility room, four cozy bedrooms, a family bathroom, and a refreshing shower room.

Unwind under the sunny skies of Portstewart in this ideal space for a growing family. Don't miss out on the opportunity to experience coastal living at its finest.

Arrange your early viewings today by contacting 02870832220.

Parking options: Driveway

Garden details: Enclosed Garden, Front Garden, Rear Garden

Electricity supply: Mains

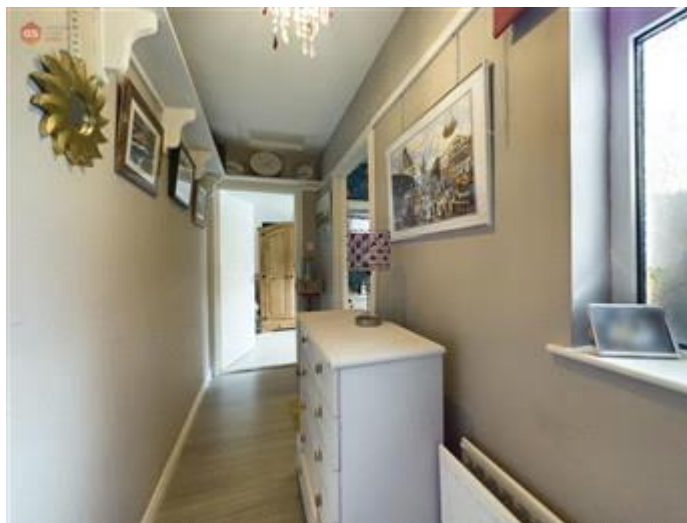
Heating: Gas Mains

Water supply: Mains

Sewerage: Mains

Tenure





| Energy Efficiency Rating | | |
|---|---------|-----------|
| | Current | Potential |
| Very energy efficient - lower running costs | | |
| (92+) A | | |
| (81-91) B | | |
| (69-80) C | | |
| (55-68) D | 59 | 66 |
| (39-54) E | | |
| (21-38) F | | |
| (1-20) G | | |

Viewing by appointment only
 Causeway Coast Sales & Rentals - Head Office
 1 Harbour Road, Portstewart, County Londonderry BT55 7AX
 Tel: 02870832220 Email: info@causewaycoastrentals.co.uk Website:

