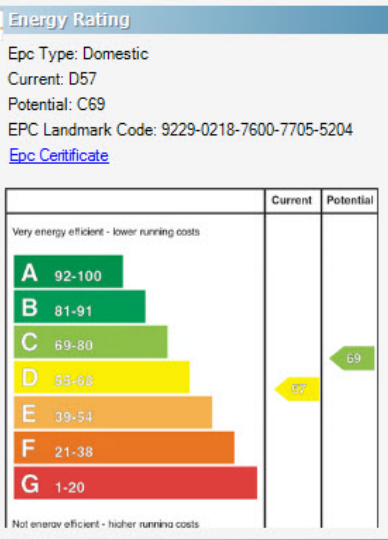
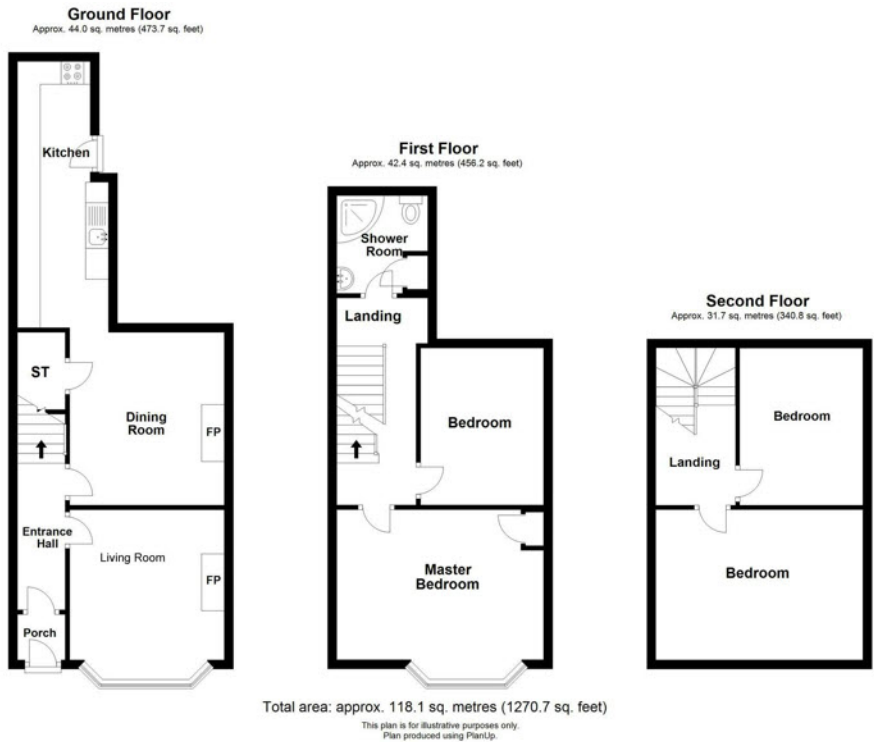


Outside

Enclosed forecourt and tiled path, black gate. Enclosed rear yard.

TEMPLETON
ROBINSON

TEMPLETON
ROBINSON



Lisburn Road - 028 90 66 3030
Ballyhackamore - 028 90 65 0000
North Down - 028 90 42 4747
Lisburn - 028 92 66 1700
www.templetonrobinson.com



These particulars do not constitute any part of an offer or contract. None of the statements contained in these particulars are to be relied on as statements or representations of fact and intending purchasers must satisfy themselves by inspection or otherwise to the correctness of each of the statements contained in these particulars. The Vendor does not make or give, neither Templeton Robinson, nor any person in its employment has any authority to make or give, any representation or warranty whatever in relation to this property. All dimensions are taken to nearest 3 inches.



Situated just off the thriving Lisburn Road, this is a superb three storey terrace home. The spacious accommodation is in need of modernisation and updating but offers excellent potential and well proportioned accommodation with four good bedrooms. It combines character and charm of a period terrace and is ready for any purchaser to add their own stamp.

Combining convenience to all essential amenities the prime location will have obvious appeal to many. Early viewing is advised to avoid disappointment.

Offers Over
£239,950

15 Lancefield Road,
BELFAST,
BT9 6LL

Viewing by
appointment with
& through agent
028 9066 3030

15 Lancefield Road,
BELFAST,
BT9 6LL

Property Features

- Three Storey Mid Terrace Home Ready for Modernisation and Updating
- Prime Lisburn Road Location Close to Many Amenities in the Area
- Entrance Hall
- Living Room
- Separate Dining Room with Under Stairs Storage
- Fitted Kitchen
- Four Excellent Sized Bedrooms
- Shower Room
- Gas Heating
- Enclosed Rear Yard
- Just off the Thriving Lisburn Road and Walking Distance of Many Local Amenities and Public Transport Links

Location:

Coming out of Belfast on the Lisburn Road, Lancefield Road is the second road on the left hand side after the Bank of Ireland.

Property Comprises

Ground Floor

Hardwood front door to . . .

ENTRANCE PORCH: Black and white tiled floor. Hardwood door and glazing to . . .

ENTRANCE HALL: Cornice ceiling.

LIVING ROOM: 13' 5" x 11' 11" (4.09m x 3.63m) (at widest points).

Tiled fireplace, cornice ceiling, picture rail, bay window.

DINING ROOM: 13' 2" x 11' 6" (4.01m x 3.51m) (at widest points).

Tiled fireplace, under stairs storage.

MODERN FITTED KITCHEN: 19' 2" x 6' 4" (5.84m x 1.93m) (at widest points). Range of high and low level units, work surfaces, single drainer stainless steel sink unit, space for cooker and fridge, plumbed for washing machine, ceramic tiled floor, uPVC door to rear.

First Floor Return

SHOWER ROOM: White suite comprising low flush wc, fully tiled shower cubicle, pedestal wash hand basin, part tiled walls, extractor fan, access to roofspace, airing cupboard.

First Floor

LANDING:

BEDROOM (1): 15' 2" x 13' 4" (4.62m x 4.06m) (at widest points into bay). Built-in robe, bay window, cornice ceiling.

BEDROOM (2): 11' 9" x 8' 9" (3.58m x 2.67m) (at widest points). Cornice ceiling.

Second Floor

LANDING:

BEDROOM (3): 13' 9" x 10' 8" (4.19m x 3.25m) (at widest points).

BEDROOM (4): 11' 3" x 9' 0" (3.43m x 2.74m) (at widest points).

Cast iron fireplace.

