

TEMPLETON
ROBINSON



18 St Judes Avenue,
BELFAST,
BT7 2GZ

Offers Over
£550,000

Viewing by
appointment with
& through agent
028 90 663030



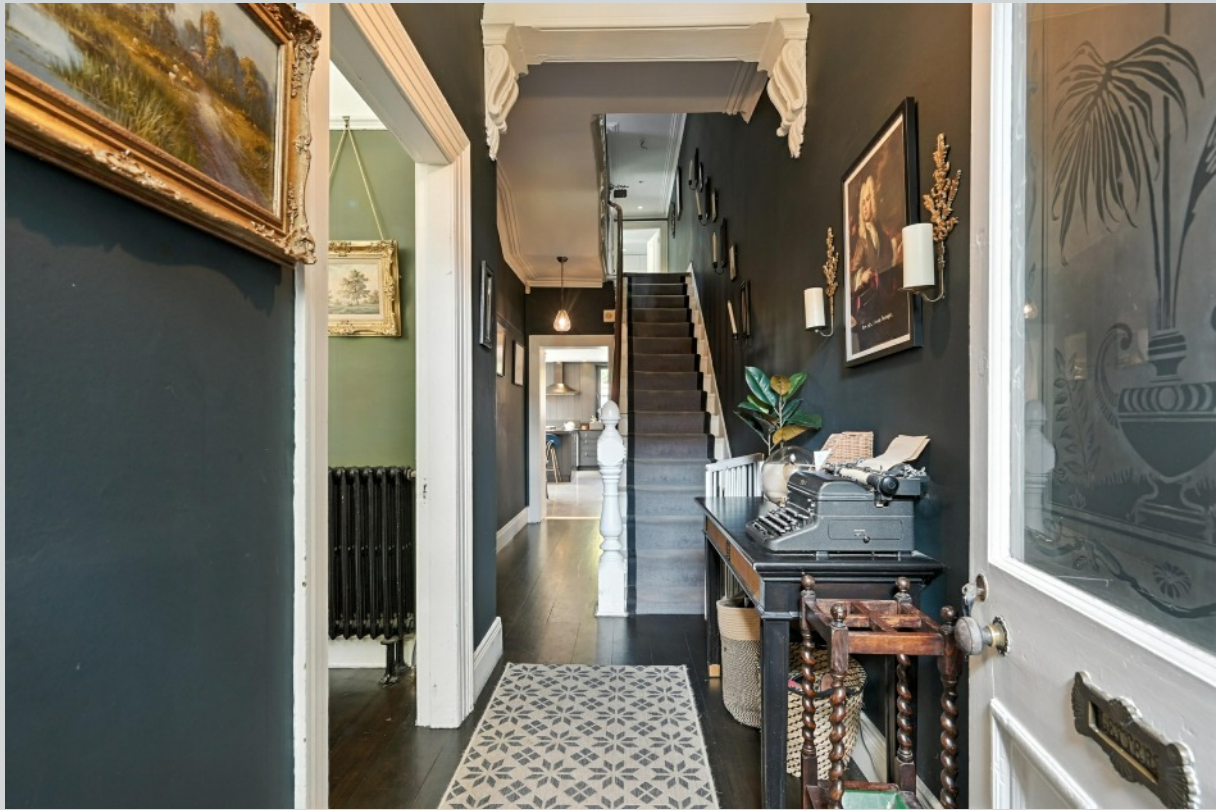
Nestled on one of South Belfast's most charming and lesser-known tree-lined avenues, this elegant three-storey Victorian townhouse seamlessly blends timeless period character with modern family living. Thoughtfully extended and meticulously updated, the property offers four generous double bedrooms and a refined interior filled with original features and contemporary style. The heart of the home is an impressive kitchen and dining area, beautifully extended and flooded with natural light from a striking feature roof-light and floor to ceiling windows. This space has been carefully designed to offer both functionality and aesthetic appeal—perfect for modern family life and entertaining.

Period details have been thoughtfully restored

and enhanced throughout, most notably the reinstated sliding sash windows at the front, adding authenticity and charm. The clever redesign of the first floor return has introduced a highly practical utility space, complementing two sleek, modern bathrooms.

Outside, the south-facing, courtyard-style front garden has been tastefully landscaped to provide a tranquil retreat, framed by mature trees that line the avenue. Despite its peaceful setting, the vibrant Ormeau Road is just a short three-minute stroll away.

This is a rare opportunity for discerning buyers seeking a beautifully restored period home that delivers on both character and the practicalities of 21st-century living.



- An impressive red brick Victorian Terrace in prime residential location just off the Ormeau Road
 - In excellent condition throughout
 - Spacious living room with original slate fireplace and bay window
 - Separate family room with slate fireplace with access to kitchen
 - Beautiful character and charm that will have wide ranging appeal
- Luxury fully fitted kitchen with breakfast island opening to ample dining area with terrazzo style tiled floor and exposed red brick wall
 - First floor laundry area with washing machine and dryer
 - Four large double bedrooms
- Bathroom with white suite and separate shower cubicle and additional separate shower room with white suite
 - Double glazed windows and gas fired central heating
 - Enclosed private courtyard ideal for outdoor entertaining
 - House of the Year finalist on BBC NI

Telephone 028 9066 3030
www.templetonrobinson.com

The Property Comprises:

Ground Floor

Hardwood front door with glazed top light to . . .

RECEPTION PORCH: Ceramic tiled floor with brushed mat inset. Glazed and bevelled inner door with glazed and bevelled side light and glazed top light to . . .

RECEPTION HALL: Solid wooden floor, cornice ceiling, ceiling rose, storage under stairs.



LIVING ROOM: 15' 6" x 13' 7" (4.72m x 4.14m) (into bay). Wooden floor, cornice ceiling, picture rail, ceiling rose, slate surround fireplace with brick recess, slate hearth and open fire.



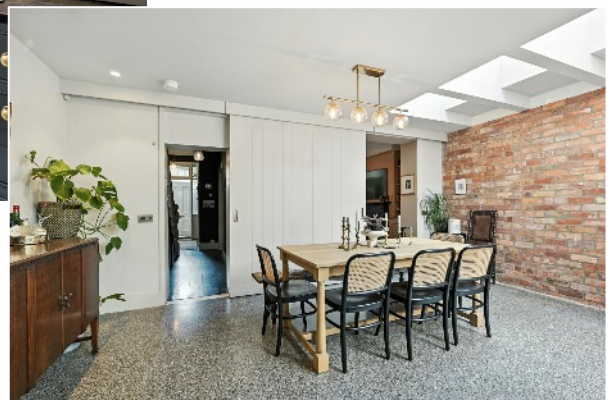
Glazed bi-folding doors to . . .

FAMILY ROOM: 12' 3" x 12' 3" (3.73m x 3.73m) Solid wooden floor, slate surround fireplace with brick recess and open fire and slate hearth, built-in shelving, picture rail, cornice ceiling, ceiling rose.



KITCHEN/LIVING/DINING AREA: 22' 1" x 17' 7" (6.73m x 5.36m) Modern fully fitted kitchen with excellent range of high and low level units, soapstone worktops, stainless steel double sink unit with mixer tap, feature red brick wall, skylights, built-in electric Aga, built-in larder cupboard, built-in Neff high level oven, dishwasher, breakfast island with soapstone worktop and built-in breakfast bar. Open to ample dining area with terrazzo stone porcelain tiled floor, underfloor heating, feature picture window to rear courtyard, double glazed access door to rear.





First Floor Return

BUILT-IN UTILITY AREA: Built-in cupboards with electric, plumbed for washing machine, feature stained glass window.



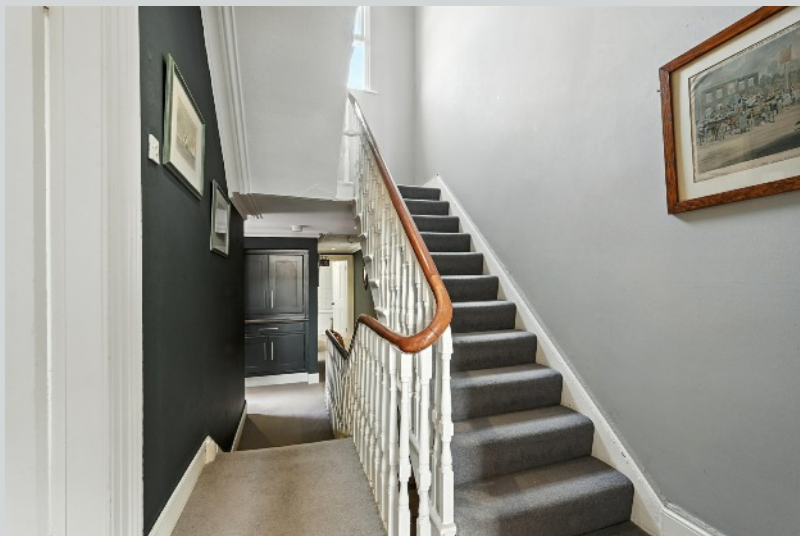
BATHROOM: White suite comprising low flush wc, panelled bath with tiled splashback, separate built-in shower cubicle with chrome overhead shower unit and tiled splashback, ceramic tiled floor, walnut built-in shelving, heated towel rail.



ADDITIONAL SEPARATE SHOWER ROOM: Duvavit white suite comprising low flush wc, floating wash hand basin, built-in shower cubicle with chrome overhead shower unit and tiled splashback, ceramic tiled floor, part tiled walls, heated towel rail.



First Floor
LANDING:



Telephone 028 9066 3030
www.templetonrobinson.com

BEDROOM (1): 17' 9" x 12' 7" (5.41m x 3.84m) Exposed and treated wooden floor, built-in wardrobes, slate surround fireplace with cast iron tiled inset.



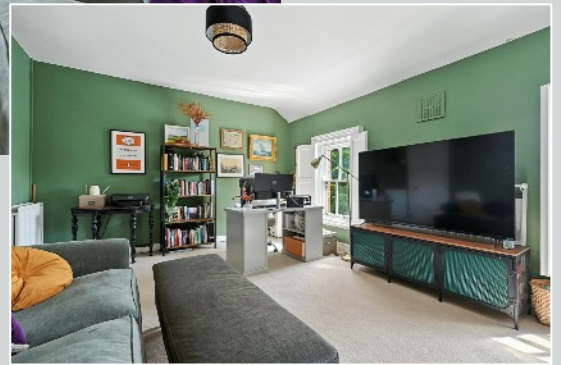
BEDROOM (2): 12' 3" x 12' 1" (3.73m x 3.68m) Cast iron fireplace, exposed and treated wooden floor, picture rail, cornice ceiling.



Second Floor

LANDING:

BEDROOM (3): 18' 8" x 12' 6" (5.69m x 3.81m) Outlook to front, cast iron fireplace.



BEDROOM (4): 12' 3" x 12' 1" (3.73m x 3.68m) Exposed and treated wooden floor.



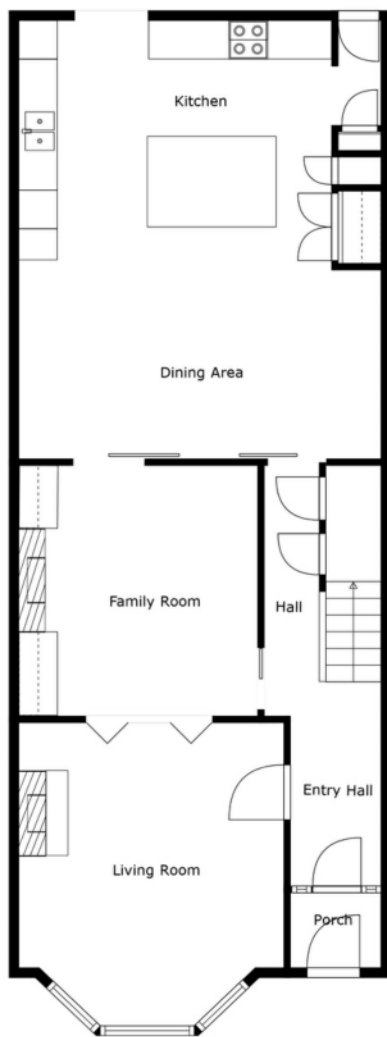
Telephone 028 9066 3030

www.templetonrobinson.com

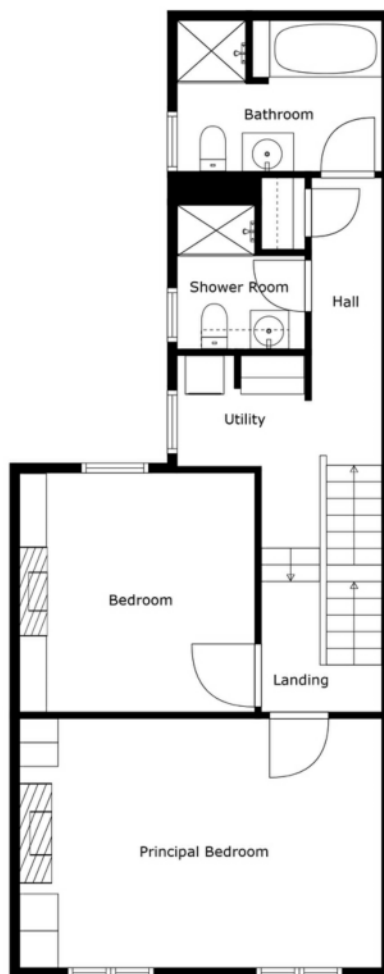
Outside

Front forecourt, patio area for sitting outside, enclosed rear yard area for outdoor entertaining.





Floor 1



Floor 2

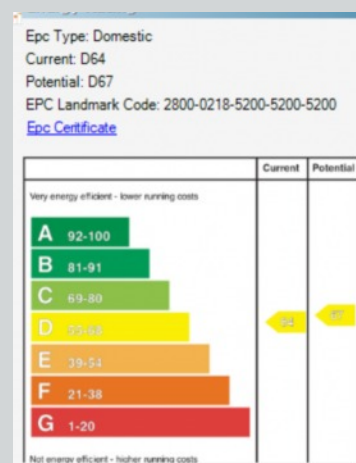


Floor 3

Sizes And Dimensions Are Approximate. Actual May Vary.

Location:

From the Ravenhill Road heading out of town take the second turn on the right prior to the roundabout at the junction of Ravenhill Road and Ormeau Road.



Telephone 028 9066 3030
www.templetonrobinson.com

Lisburn Road - 028 90 66 3030
Ballyhackamore - 028 90 65 0000
North Down - 028 90 42 4747
Lisburn - 028 92 66 1700

www.templetonrobinson.com



These particulars do not constitute any part of an offer or contract. None of the statements contained in these particulars are to be relied on as statements or representations of fact and intending purchasers must satisfy themselves by inspection or otherwise to the correctness of each of the statements contained in these particulars. The Vendor does not make or give, neither Templeton Robinson, nor any person in its employment has any authority to make or give, any representation or warranty whatever in relation to this property. All dimensions are taken to nearest 3 inches.